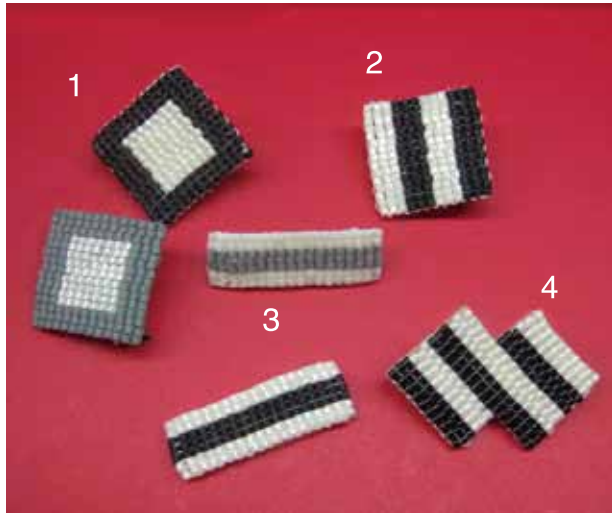


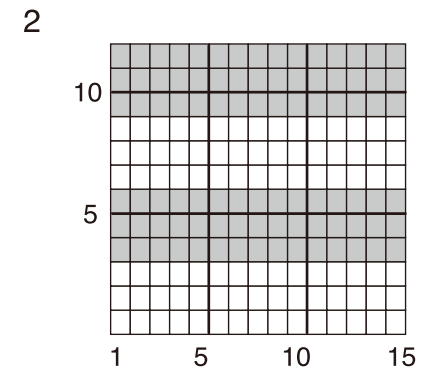
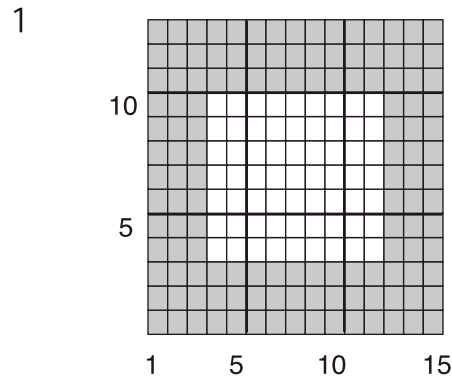
Monotone Brooch



Instructions

1. Weave the beads together and finish off the threads as shown in the diagrams.
For information on how to weave and finish off the threads consult the user's manual that comes with the product.
 2. Cut a piece of felt slightly smaller than the motif and attach the brooch pin to it.
 3. Attach the beaded motif to the felt piece from (2) to complete the design.
- * When fastening the threads, you can also turn the piece over and glue them together.

Designs



Tools

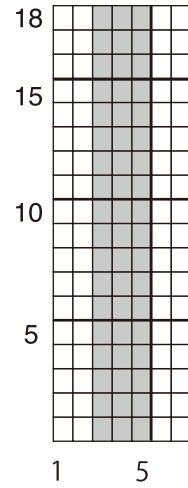
- Clover Mini Beading Loom
- Sewing needle

Materials

- Cylinder beads in two of your preferred colors
- Beading thread #40 ~ #60 (Nylon or Polyester)
- Felt
- Brooch Pin
- Sewing thread
- Glue

Monotone Brooch

3



4

