

Colourful patchy dog



Designed by Sachiyo Ishii

Finished size: 20cm

Tools

- [3.5 mm Bamboo Knitting Needles Takumi Single Pointed \(23 cm\) \(Art No. 3707\)](#)



- [Gold Eye Chenille Needle \(No. 18\) \(Art No. 234/18\)](#)



- [Patchwork Scissors\(Mini\) \(493/CW\)](#)



Materials

- [A] 30g white DK
- [B] 15g red DK
- [C] 15g green DK
- [D] 10g yellow DK
- [E] 10g brown DK
- [F] A small amount of blue DK
- [G] A small amount of dark brown DK
- A pair of 12mm safety eyes
- Toy stuffing

Tension

24 sts and 32 rows for a 10 x 10 cm tension square (not essential).

Yarn used

- Deramores Studio DK in
 [A] Frost 70001,
 [B] Raspberry 70005,
 [C] Peridot 70011,
 [D] Citrine 70042,
 [E] Rosewood 70062,
 [F] Ocean 70067,
 [G] Amethyst 70047
 DK (8-ply) weight, 100g per 250m, 100% Anti-Pilling Acrylic

Practical tips

- Leave long ends at the beginning and end for sewing.
- Sew seam with RS facing, using mattress stitch.
- If you do not wish to use safety eyes, make French knots with black yarn.

Colourful patchy dog

Abbreviations

RS: right side

WS: wrong side

St st: stocking stitch

St(s): stitch(es)

K: knit

P: purl

Kfb: k one through the front then through the back (same stitch)

K2tog: knit two together

Knitting instructions

Body

With A, cast on 10 sts.

Row 1 (WS): Purl.

Row 2: [Kfb] 10 times. 20 sts

Row 3 and every WS row: Purl.

Row 4: [K1, kfb] 10 times. 30 sts

Row 6: [K2, kfb] 10 times. 40 sts

Row 8: [K3, kfb] 10 times. 50 sts

Row 10: [K4, kfb] 10 times. 60 sts

Rows 11-17: Starting with a p row, work 7 rows in St st.

Rows 18-37: Work the body chart.

Break yarn C and E.

Row 38: [K4, k2tog] 10 times. 50 sts

Rows 39-43: Starting with a p row, work 5 rows in St st.

Row 44: [K3, k2tog] 10 times. 40 sts

Rows 45-47: Starting with a p row, work 3 rows in St st.

Row 48: [K2, k2tog] 10 times. 30 sts

Rows 49-51: Starting with a p row, work 3 rows in St st.

Row 52: [K1, k2tog] 10 times. 20 sts

Row 53: Purl.

Cast off.

Head

With yarn A, work as for body to row 8. 50 sts

Rows 9-25: Starting with a p row, work 17 rows in St st.

Row 26: K10, [k2tog, k1] 10 times, k10. 40 sts

Rows 27-36: Work the head chart, starting with a WS row.

Break yarn E.

Row 37: Purl.

Row 38: [K2, k2tog] 10 times. 30 sts

Row 39: Purl.

Row 40: [K1, k2tog] 10 times. 20 sts

Row 41: Purl.

Row 42: [K2tog] 10 times. 10 sts

Break yarn, thread through sts, pull tightly and fasten off.

Colourful patchy dog

Nose

With yarn G, cast on 10 sts.

Row 1 (WS): Purl.

Row 2: [Kfb] 10 times. 20 sts

Rows 3-7: Starting with a p row, work 5 rows in St st.

Row 8: [K2tog] 10 times. 10 sts

Break yarn, thread through sts, pull tightly and fasten off.

Ears: make two

With yarn B or C, cast on 18 sts.

Row 1 (WS): Purl.

Row 2: [K2, kfb] 6 times. 24 sts

Row 3: Purl.

Row 4: [K3, kfb] 6 times. 30 sts

Rows 5-17: Starting with a p row, work 13 rows in St st.

Row 18: [K3, k2tog] 6 times. 24 sts

Rows 19-23: Starting with a p row, work 5 rows in St st.

Row 24: [K2, k2tog] 6 times. 18 sts

Row 25: Purl.

Row 26: [K1, k2tog] 6 times. 12 sts

Cast off.

Legs: make two

With yarn B or D, cast on 15 sts.

Row 1 (WS): Purl.

Row 2: [K2, kfb] 5 times. 20 sts

Row 3: Purl.

Row 4: [K1, kfb] 10 times. 30 sts

Row 5: Purl.

Break yarn B or D. Change to yarn A.

Rows 6-13: Starting with a k row, work 8 rows in St st.

Row 14: K9, [k2tog] 6 times, k9. 24 sts

Row 15: Purl.

Row 16: K8, [k2tog] 4 times, k8. 20 sts

Rows 17-25: Starting with a p row, work 9 rows in St st.

Cast off.

Colourful patchy dog

Arms

Right arm

With yarn A, cast on 16 sts.

Rows 1-3: Starting with a p (WS) row, work 3 rows in St st.

Rows 4-5: Change to yarn F and starting with a k row, work 2 rows in St st.

Rows 6-7: Change to yarn A and starting with a k row, work 2 rows in St st.

Rows 8-15: Repeat rows 4-7.

Rows 16-17: Repeat rows 4-5.

Break yarn F. Change to yarn A.

Rows 18-23: Starting with a k row, work 6 rows in St st.

Hand

Row 24: K11, turn, work on this set of sts. 11 sts

Rows 25-26: Starting with a p row, work 2 rows in St st.

Break yarn, thread through sts, pull tightly and fasten off.

With RS facing, join yarn to remaining 5 sts.

Row 24: Knit. 5 sts

Break yarn, thread through sts, pull tightly and fasten off.

Left arm

With yarn A, cast on 16 sts

Rows 1-7: Starting with a p (WS) row, work 7 rows in St st.

Rows 8-17: Work the left arm chart.

Rows 18-23: Starting with a k row, work 8 rows in St st.

Hand

Row 24: Knit. 5 sts

Break yarn, thread through 5 sts just worked, pull tightly and fasten off.

With RS facing, join yarn to remaining 11 sts.

Rows 24-26: Starting with a k row, work 3 rows in St st.

Break yarn, thread through sts, pull tightly and fasten off.

Tail

With yarn A, cast on 16 sts.

Rows 1-13: Starting with a p (WS) row, work 13 rows in St st.

Change to yarn B.

Rows 14-21: Starting with a k row, work 8 rows in St st.

Break yarn, thread through sts, pull tightly and fasten off.

To make up

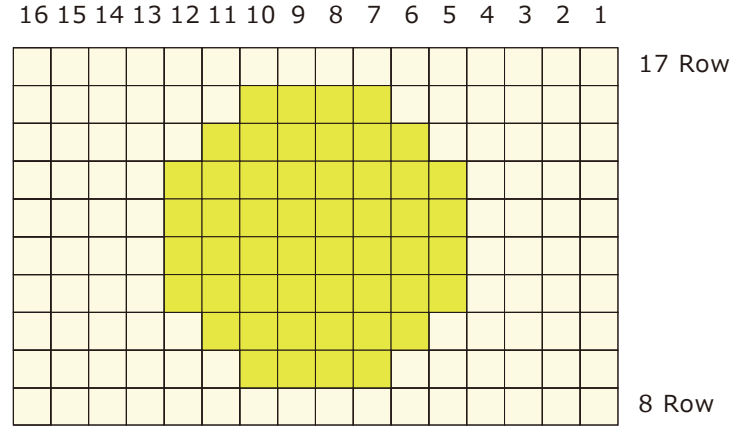
With cast-on yarn end of body, work a gathering thread along cast-on edge and draw tightly. Sew seam to neck and stuff. Keep neck end open. Fold leg piece lengthways and sew cast-on edge. Seam leg and stuff. Repeat for the other leg. Fold hand end of arm lengthways and using fastened-off yarn end, sew hand. Sew arm seam and stuff. Attach legs and arms to body. With fastened-off yarn end of head, sew seam half way. With cast-on yarn end, work a gathering thread along cast-on edge and draw tightly. Attach safety eyes. Sew up seam a little further, stuff head and close seam. Seam and stuff nose. Attach nose to head. Seam each ear and without stuffing, attach them to head. Attach head to neck.



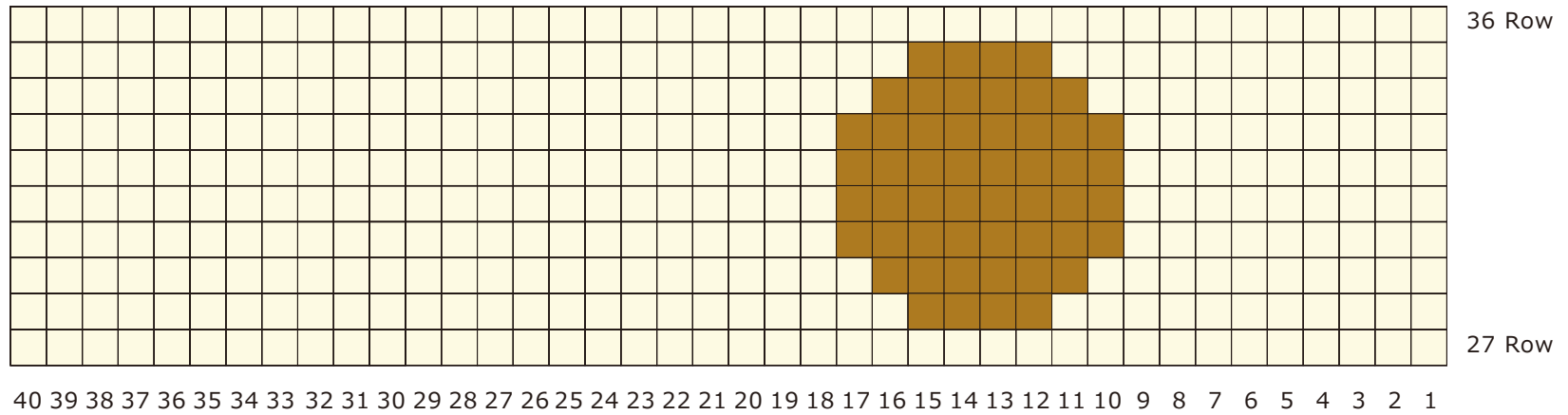
Colourful patchy dog

Left arm

- Yarn: white DK
- Yarn: yellow DK
- Yarn: brown DK

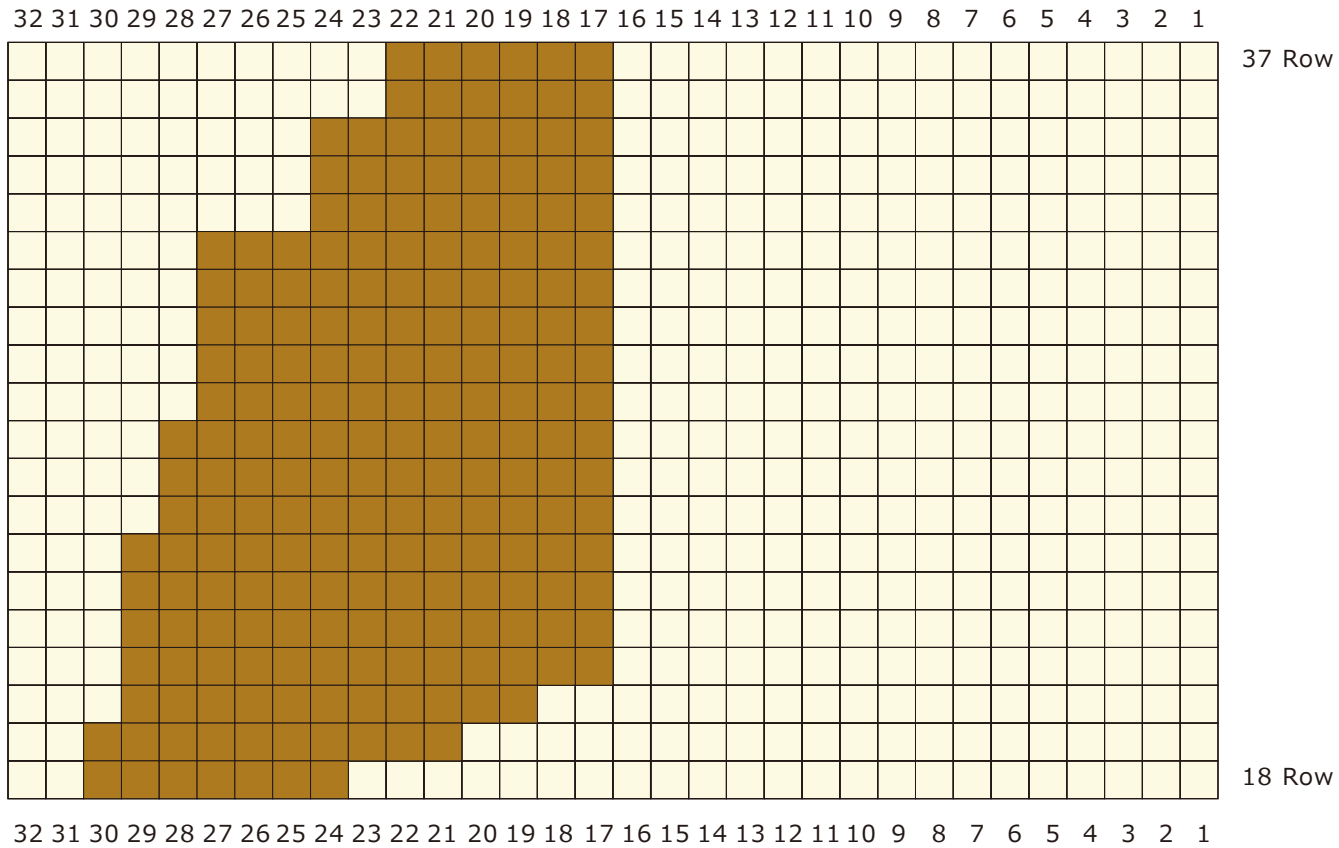


Head



Colourful patchy dog

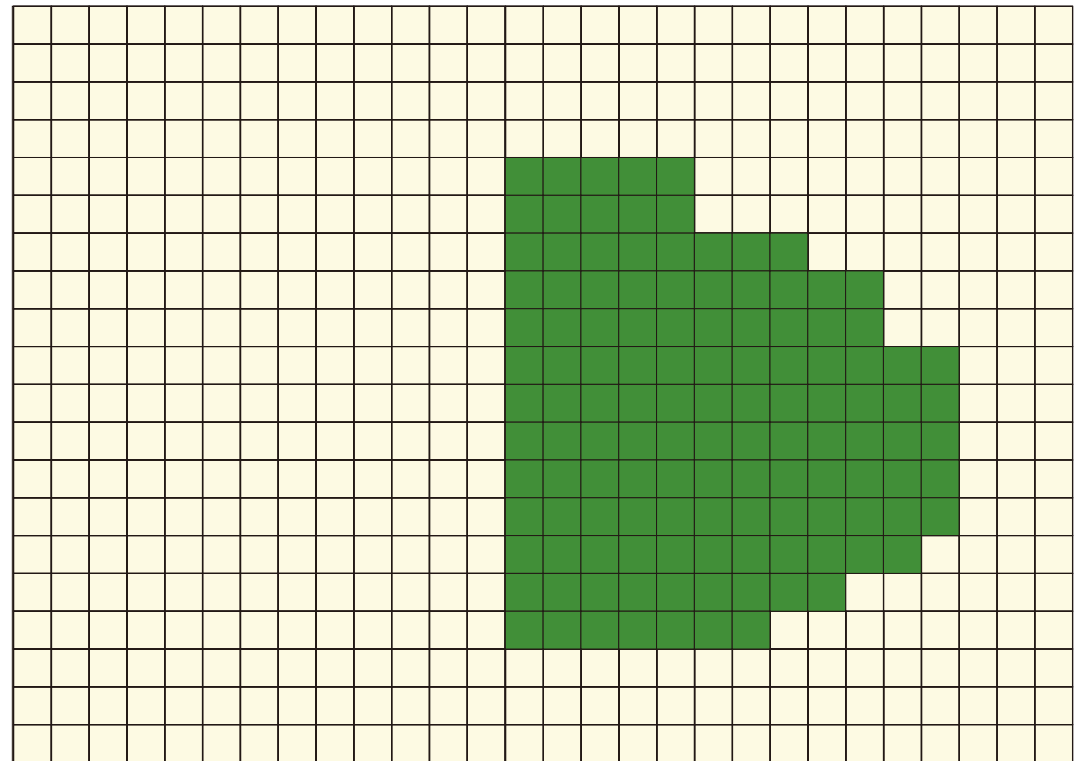
Body




Colourful patchy dog


Body

60 59 58 57 56 55 54 53 52 51 50 49 48 47 46 45 44 43 42 41 40 39 38 37 36 35 34 33



37 Row

 Yarn: white DK

 Yarn: green DK

18 Row

60 59 58 57 56 55 54 53 52 51 50 49 48 47 46 45 44 43 42 41 40 39 38 37 36 35 34 33