

Ñanduti doily

Ñanduti is a traditional Paraguayan embroidered lace introduced by Spaniards. It has a spoke-like structure of foundation threads upon which many patterns are embroidered.



Tools

- Flower Loom (Art No. 3146)
- Tapestry Needle Set (Bent tip) (Art No. 3121)
- Amour Crochet Hook 0.90 mm (Art No. 1224)
- Fabric glue
- Scissors
- Steam iron, sewing pins
- Spray starch (optional)

Materials used for the sample

- [A] 2-3 ply cotton thread, 25 g per 110m
- [B] cotton thread for lace making, 25 g per 222m

[Flower Loom](#)



[Tapestry Needle Set \(Bent tip\)](#)

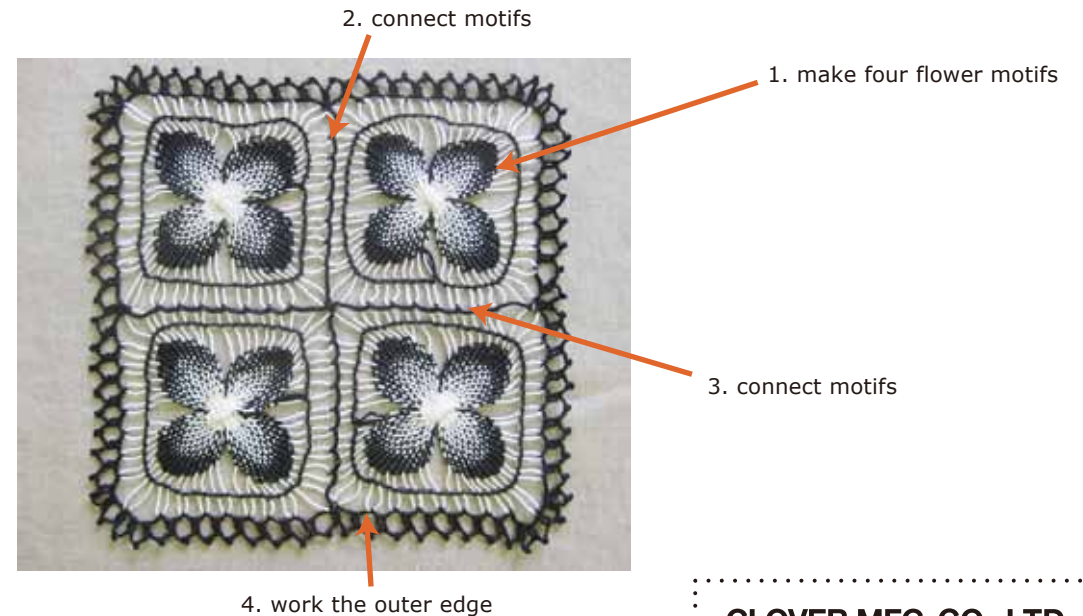


[Amour Crochet Hook \(0.90mm\)](#)



Steps

1. Make four flower motifs with cotton thread [A] (see Nanduti flower motif).
2. With cotton thread [B], connect motifs with chains and double crochet, referring to diagram A and B.
3. Connect the remaining edges as shown in diagram B.
4. Work outer edge as shown in diagram C and D.



Ñanduti doily

Diagram A

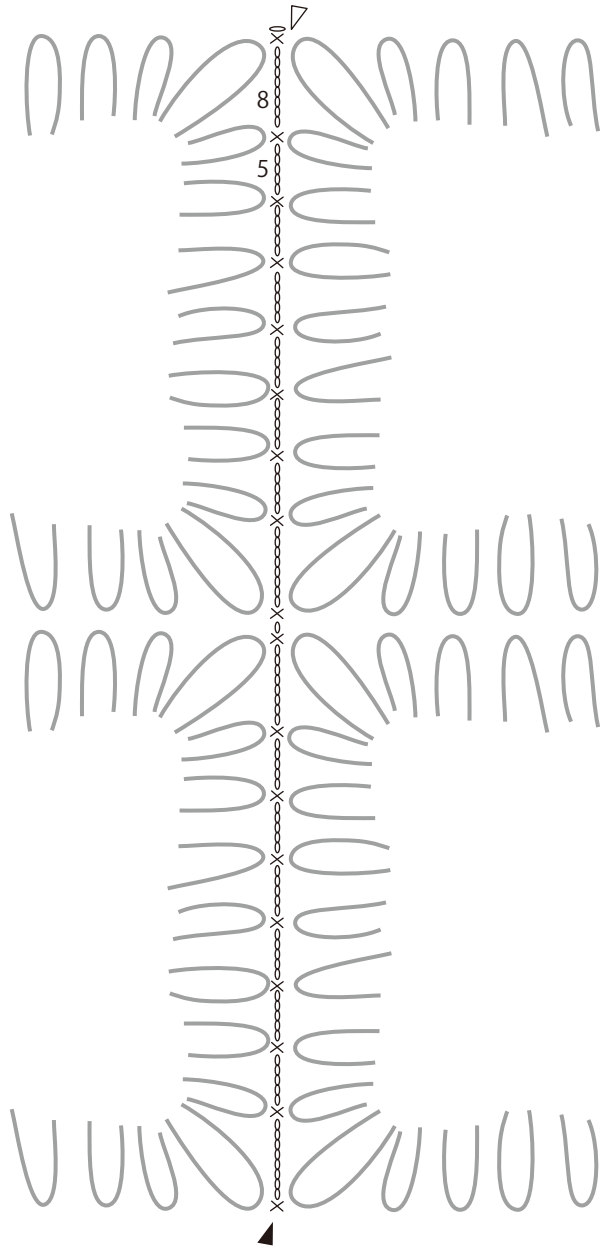
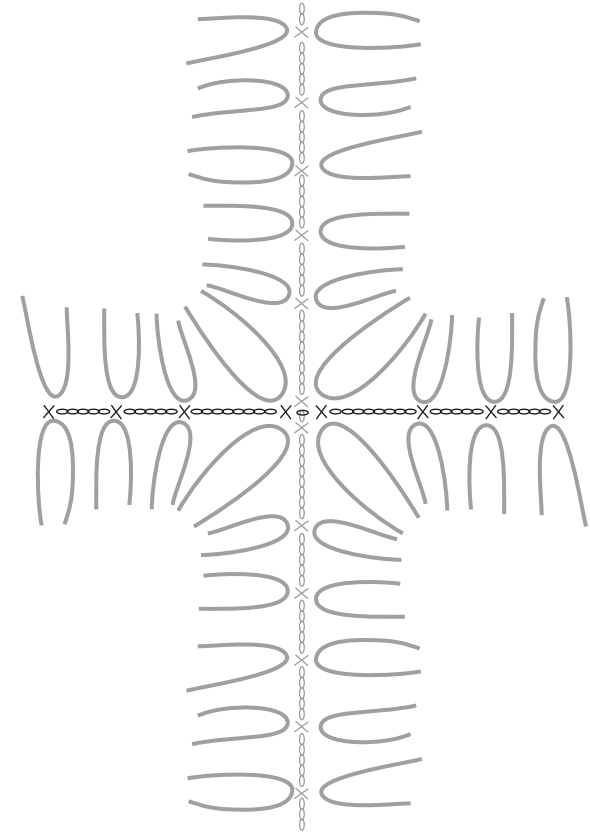
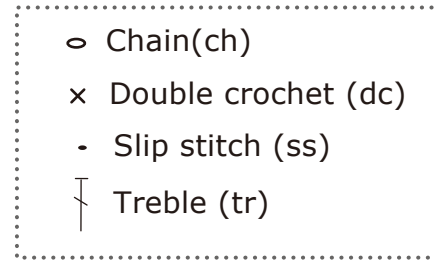


Diagram B



Crochet UK abbreviations

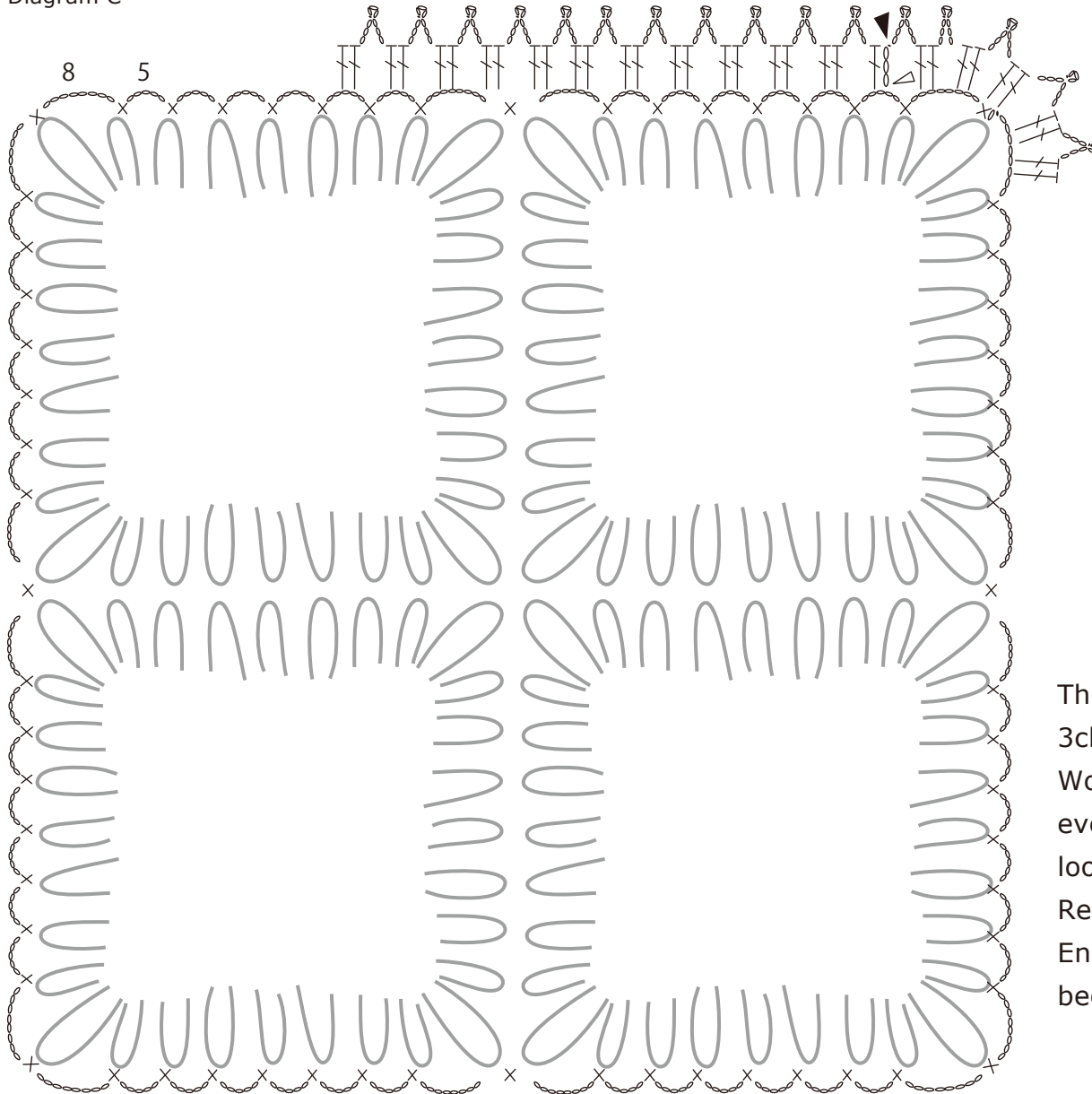
- Chain (ch)
- Double crochet (dc)
- Slip stitch (ss)
- Treble (tr)
- Space (sp)



Join B with a dc, connecting corner loops of two squares.
 Make 8 ch in corners of motif, 5ch in all other spaces
 between the loops.

Ñanduti doily

Diagram C



Crochet UK abbreviations

Chain (ch)

Double crochet (dc)

Slip stitch (ss)

Treble (tr)

Space (sp)

○ Chain(ch)

× Double crochet (dc)

• Slip stitch (ss)

⏏ Treble (tr)

The outer edge: join B in 5ch space to the left of any corner, 3ch (counts as first tr), 1tr in same sp.

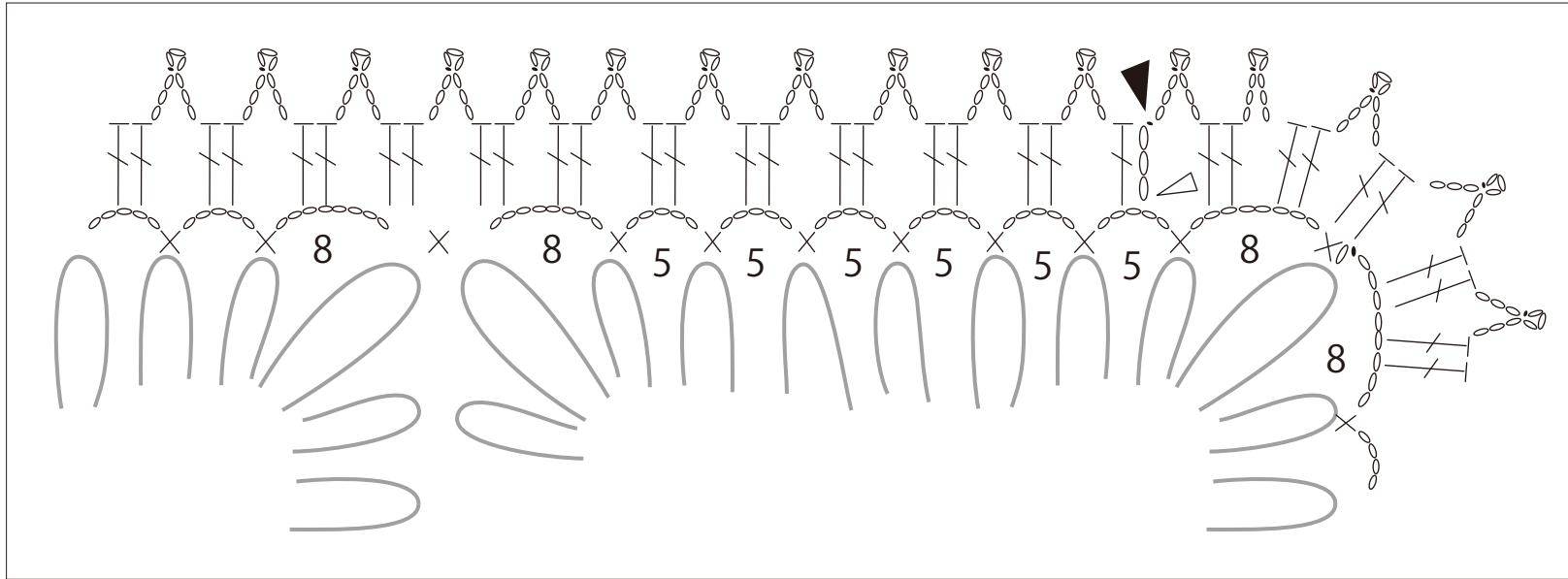
Work (4ch, ss in first ch from hook, 3ch, 2tr in sp) once in every 5ch sp, twice in every 8ch sp and once in each corner loop dc between two 8ch sp.

Refer to diagram 4.

End with 4ch, ss in first ch from hook, 3ch, ss in third of beginning 3ch to join.

Ñanduti doily

Diagram D



Crochet UK abbreviations

- Chain (ch)
- Double crochet (dc)
- Slip stitch (ss)
- Treble (tr)
- Space (sp)

- Chain(ch)
- × Double crochet (dc)
- Slip stitch (ss)
- ┆ Treble (tr)