

Pin Cushion



Designed by Sachiyo Ishii

Finished size: 6 x 6cm

Tools

- 3.0mm Bamboo Knitting Needles **Takumi**[®] Single Pointed (23 cm) (Art No. 3705)
- Gold Eye Chenille Needles(No. 18) (Art No. 234/18)
- Patchwork Scissors Mini (Art No. 493/CW)

[Bamboo Knitting Needles Takumi[®] Single Pointed](#)

[Patchwork Scissors \(Mini\)](#)

[Gold Eye Chenille Needles \(No. 18\)](#)



Materials

- [A] A small amount of white DK
- [B] A small amount of pink DK
- [C] A small amount of light blue DK
- [D] A small amount of light brown DK
- [E] A small amount of red DK
- [F] A small amount of grey DK
- [G] A small amount of yellow green DK
- Toy stuffing

About yarn used for samples

- DK weight, 50g per 165m, 55% Nylon, 45% Acrylic

Tension

32 sts and 35 rows for a 10 x 10 cm tension square over St st (not essential).

Practical tips

- Leave a long end at the beginning and end of each piece for sewing
- Sew seams with RS facing, using mattress stitch.

<Abbreviations>

RS: right side
 WS: wrong side
 St st: stocking stitch
 St(s): stitch(es)
 K: knit
 P: purl

Pin Cushion

<Knitting Instructions>

Design A

With yarn C, cast on 25 sts.

Starting with a k (RS) row, work rows 1-24 of Chart A, reading odd-numbered (RS) rows from right to left and even-numbered (WS) rows from left to right.

Row 25 (RS): p for folding edge.

With yarn C, work 24 rows in St st, starting with a p row. Cast off.

Design B

With yarn E, cast on 25 sts.

Starting with a k (RS) row, work rows 1-24 of Chart B, reading odd-numbered (RS) rows from right to left and even-numbered (WS) rows from left to right.

Row 25 (RS): p for folding edge.

With yarn E, work 24 rows in St st, starting with a p row. Cast off.

To make up

Weave in all yarn ends on wrong side of piece.

Sew side seams and stuff, then sew top edge closed.

To make fringes, cut an 8cm length of yarn C (Design A) or yarn E (Design B), fold in half and thread a needle with both ends of the folded strand.

Insert the needle from front to back at corner of pin cushion but do not pull strand all the way through.

Remove needle from strand, leaving yarn ends at the back of the cushion and the folded loop at the front.

Thread the yarn ends through the loop and pull tightly.

Trim yarn ends to neaten if desired.

Repeat to add a couple more fringes to the same corner, then repeat to make fringes for remaining three corners.

Designer' s Favorite

Bamboo Knitting Needles Takumi® Single Pointed

These are perfect when you work a small toy project. They prevent from yarn to slip and make the finish clean and neat. Very nice to the touch and delightful to work with.

<https://www.clover-mfg.com/product/4/130>



Pin Cushion

Chart A

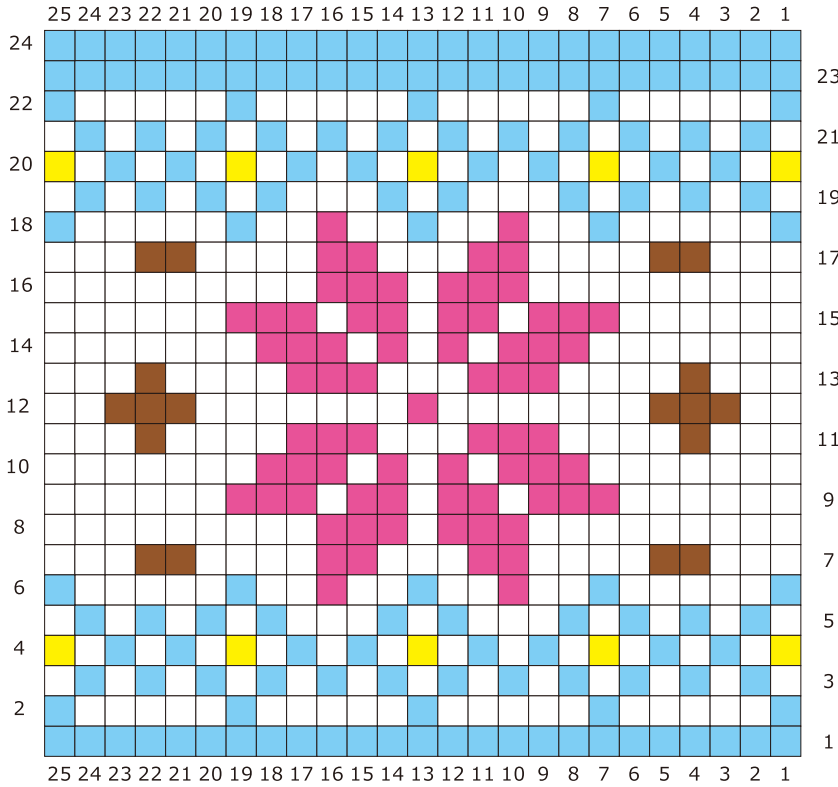
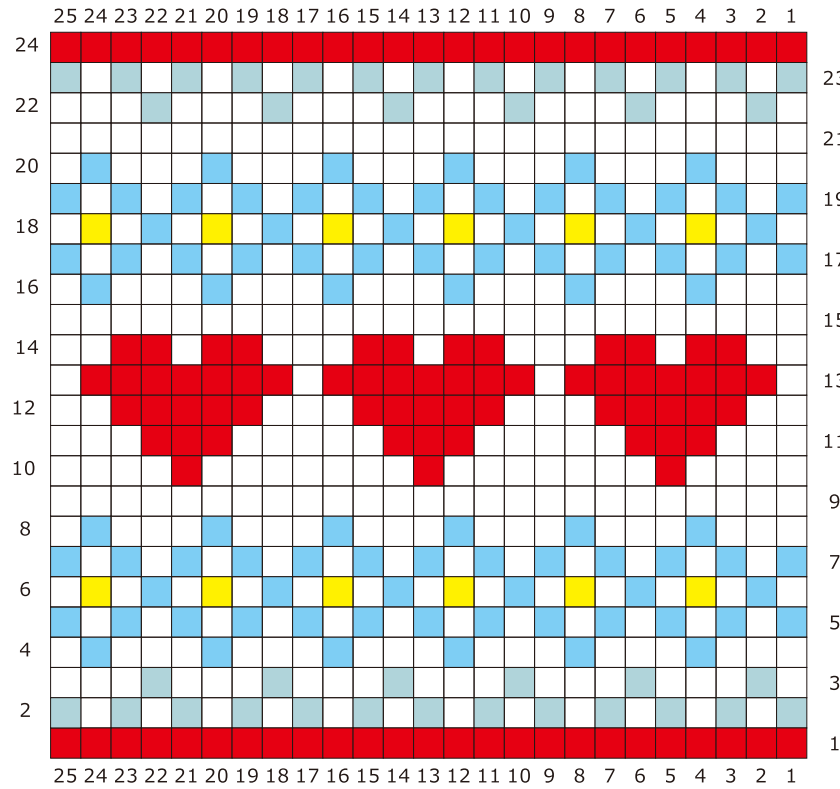


Chart B



Key

- RS knit
WS purl
- Yarn A
- Yarn B
- Yarn C
- Yarn D
- Yarn E
- Yarn F
- Yarn G