

Mug Cosy



Designed by Sachiyo Ishii

Finished size: 7 x 24cm

Tools

- 3.0mm Bamboo Knitting Needles **Takumi**[®] Single Pointed (23 cm) (Art No. 3705)
- Gold Eye Chenille Needles (No. 18) (Art No. 234/18)
- Patchwork Scissors Mini (Art No. 493/CW)
- Pom-Pom Maker (Extra Small) 25mm (Art No. 3127)

[Bamboo Knitting Needles Takumi[®] Single Pointed](#)



[Patchwork Scissors \(Mini\)](#)



[Gold Eye Chenille Needles \(No. 18\)](#)



[Pom-Pom Maker \(Extra Small\)](#)



Materials

- Small amounts of 4-ply (fingering) weight yarn in [A] coral pink, [B] pastel pink, [C] dark pink
- 2cm button
- Cotton thread to sew button

About yarn used for samples

- 4-ply weight, 50g per 226m, 55% Nylon, 45% Acrylic

Tension

- 30 sts and 36 rows for a 10 x 10 cm tension square over St st

Practical tips

- Leave a long end at the beginning and end of each piece for sewing

<Abbreviations>

RS: right side

WS: wrong side

St st: stocking stitch

St(s): stitch(es)

K: knit

P: purl

Yf: yarn forward

K2tog: knit two together

Mug Cosy

<Knitting Instructions>

With yarn A, cast on 55 sts.

Row 1 (RS): [K1, p1] to last st, k1.

Row 2: [P1, k1] to last st, p1.

Rows 3 and 4: Repeat rows 1 and 2.

Join in yarn B.

Rows 5-23: Work the chart, starting with a k (RS) row and finishing with a k (RS) row.

Fasten off yarn B.

Change to yarn A.

Row 24 (WS): [P1, k1] to last st, p1.

Row 25: [K1, p1] to last st, k1.

Rows 26 and 27: Rep rows 24 and 25.

Cast off k-wise.

Sides: work both sides the same

With RS facing and yarn A, pick up 18 sts along short edge, turn.

Rows 1-2: Starting with a p (WS) row, work 2 rows in St st.

Rows 3-6: K.

Cast off k-wise.

Band

With yarn A, cast on 10 sts.

Rows 1-17: K.

Row 18 (buttonhole): K4, yf, k2tog, k4.

Rows 19-22: K.

Cast off k-wise.

To make up

Weave in ends.

Sew non-buttonhole end of band to centre of one short edge of cosy.
Sew button to opposite short edge of cosy to correspond with band buttonhole.

With yarn C and 25mm pompom maker, make two pompoms, leaving extra long tails when tying off the pompom centres.

Attach one tail to top corner of each side.

Designer's Favorite

Bamboo Knitting Needles Takumi® Single Pointed

These are perfect when you work a small toy project. They prevent the yarn from slipping and make the finish clean and neat.

Very nice to the touch and delightful to work with.

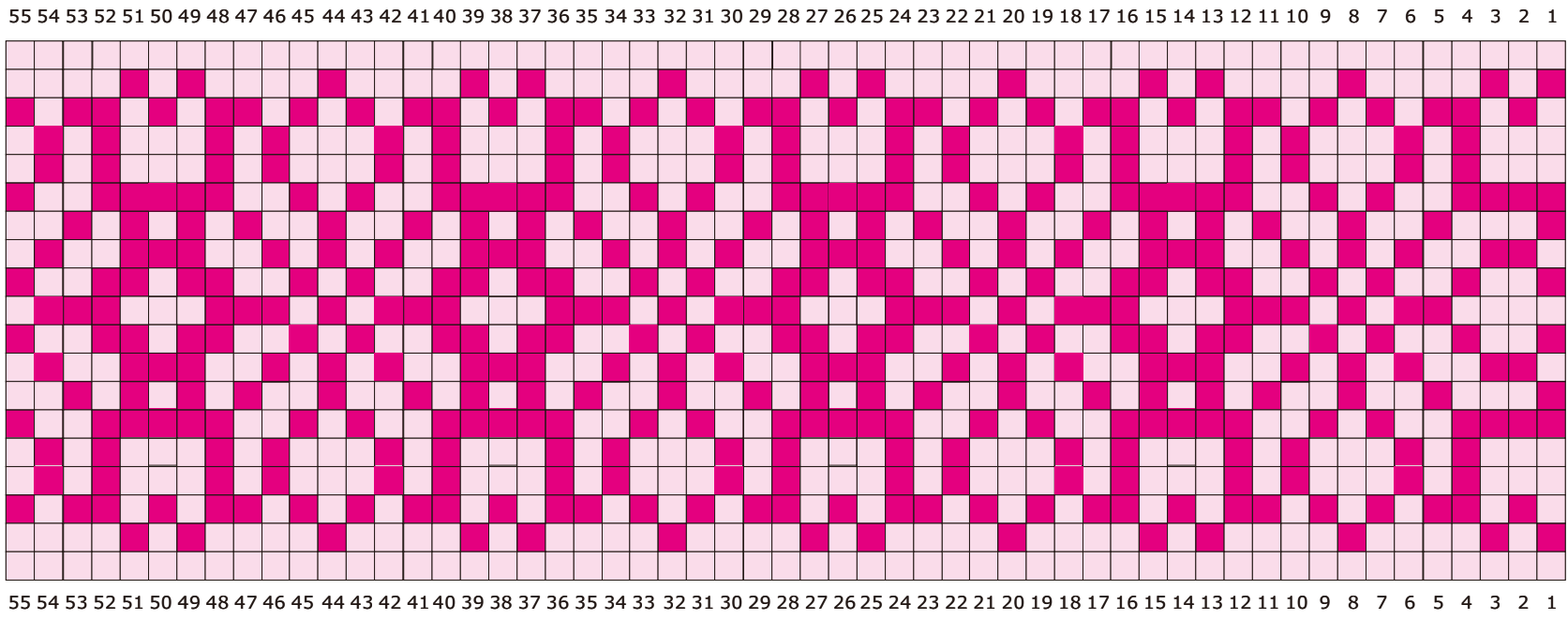
<https://www.clover-mfg.com/product/4/130>



Mug Cosy

Mag cosy

Key



- RS knit
WS purl
- Yarn B
- Yarn C