

Phone cosy



Designed by Sachiyo Ishii

Finished size: 8.5 x 17cm

Tools

- 3.0mm Bamboo Knitting Needles **Takumi**[®] Single Pointed (23 cm) (Art No. 3705)
- Gold Eye Chenille Needles (No. 18) (Art No. 234/18)
- Patchwork Scissors Mini (Art No. 493/CW)

[Bamboo Knitting Needles **Takumi**[®] Single Pointed](#)



[Patchwork Scissors \(Mini\)](#)



[Gold Eye Chenille Needles \(No. 18\)](#)



Materials

- [A] 10g DK (8-ply) weight yarn in sky blue
- Small amounts of DK (8-ply) weight yarn in [B] blue, [C] red

About yarn used for samples

- DK weight, 50g per 165m, 55% Nylon, 45% Acrylic

Tension

- 30 sts and 36 rows for a 10 x 10 cm tension square over St st

Practical tips

- Leave a long end at the beginning and end of each piece for sewing
- Sew seams with RS facing, using mattress stitch.

<Abbreviations>

RS: right side
 WS: wrong side
 St st: stocking stitch
 St(s): stitch(es)
 K: knit
 P: purl

Phone cosy

<Knitting Instructions>

With yarn B, cast on 26 sts.

Rows 1-4: [K1, p1] to end.

Change to yarn A.

Rows 5-9: Starting with a k (RS) row, work 5 rows in St st.

Rows 10-53: Work the chart twice, starting with a p (WS) row and finishing with a k (RS) row.

Fasten off yarn C.

Rows 54-57: Using yarn A only, starting with a p row, work 4 rows in St st.

Change to yarn B.

Rows 58-63: Starting with a p row, work 6 rows in St st.

Row 64 (WS): K (for edge row).

Rows 65-70: Starting with a k row, work 6 rows in St st.

Change to yarn A.

Rows 71-122: Starting with a k row, work 52 rows in St st.

Change to yarn B.

Row 123: P.

Rows 124-127: [K1, p1] to end.

Cast off.

To make up

Fold cosy along edge row. Sew side seams. Weave in ends.

Designer's Favorite

Bamboo Knitting Needles Takumi® Single Pointed

These are perfect when you work a small toy project. They prevent the yarn from slipping and make the finish clean and neat.

Very nice to the touch and delightful to work with.

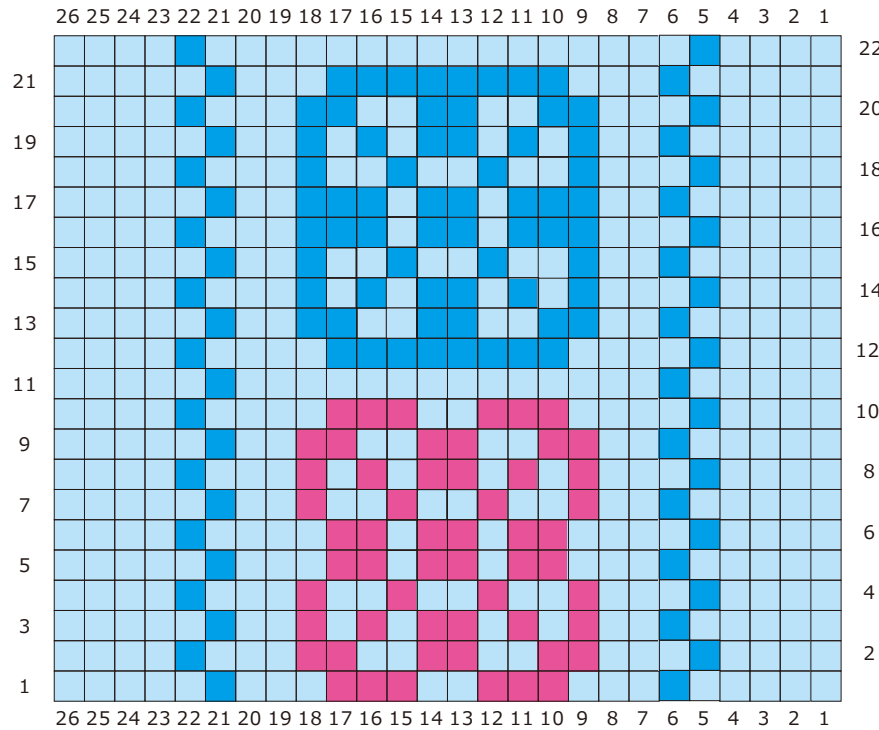
<https://www.clover-mfg.com/product/4/130>








Phone cosy

Phone cosy

Key



-  RS knit
-  WS purl
-  Yarn A
-  Yarn B
-  Yarn C