

Pin cushion



Designed by Sachiyo Ishii

Finished size: 4.5cm base diameter

Tools

- 3.0mm Bamboo Knitting Needles **Takumi**[®] Single Pointed (23 cm) (Art No. 3705)
- Gold Eye Chenille Needles (No. 18) (Art No. 234/18)
- Patchwork Scissors Mini (Art No. 493/CW)

[Bamboo Knitting Needles **Takumi**[®] Single Pointed](#)



[Patchwork Scissors \(Mini\)](#)



[Gold Eye Chenille Needles \(No. 18\)](#)



Materials to make one

- Small amounts of 4-ply (fingering) weight yarn in pink and red/green and sky blue/yellow and orange
- 5g DK (8-ply) weight yarn in light brown
- Toy stuffing

About yarn used for samples

- 4-ply weight, 50g per 200m, 100% Acrylic
- DK weight, 50g per 150m, 100% Acrylic

Tension

- 29 sts and 35 rows for a 10 x 10 cm tension square over St st (not essential).

Practical tips

- Leave a long end at the beginning and end of each piece for sewing
- Sew seams with RS facing, using mattress stitch.

<Abbreviations>

RS: right side

WS: wrong side

St st: stocking stitch

St(s): stitch(es)

K: knit

P: purl

Kfb: knit into front and back of same stitch

Pin cushion

<Knitting Instructions>

Base

With light brown DK, cast on 12 sts.

Row 1 (WS): P.

Row 2: [Kfb] to end. 24 sts

Rows 3, 5 and 7: P.

Row 4: [K1, kfb] to end. 36 sts

Row 6: [K2, kfb] to end. 48 sts

Row 8: P for edge.

Rows 9-11: [K1, p1] to end.

Cast off k-wise.

Top

With 4-ply colour of your choice, cast on 40 sts.

Rows 1-6: Starting with a k (RS) row, work 6 rows in st st.

Rows 7-35: Work the chart of your choice.

Starting with a k row and finishing with a k row.

Rows 36-41: Using original 4-ply colour, starting with

a p (WS) row, work 6 rows in st st.

Cast off.

To make up

Work a gathering thread along the entire outside edge of the top piece, insert toy stuffing and draw tightly.

With cast-on yarn end of the base piece, work a gathering thread along cast-on edge and draw tightly.

Seam the base piece, encase the stuffed top piece and secure the edges all around.



Designer's Favorite

Bamboo Knitting Needles Takumi® Single Pointed

These are perfect when you work a small toy project. They prevent the yarn from slipping and make the finish clean and neat.

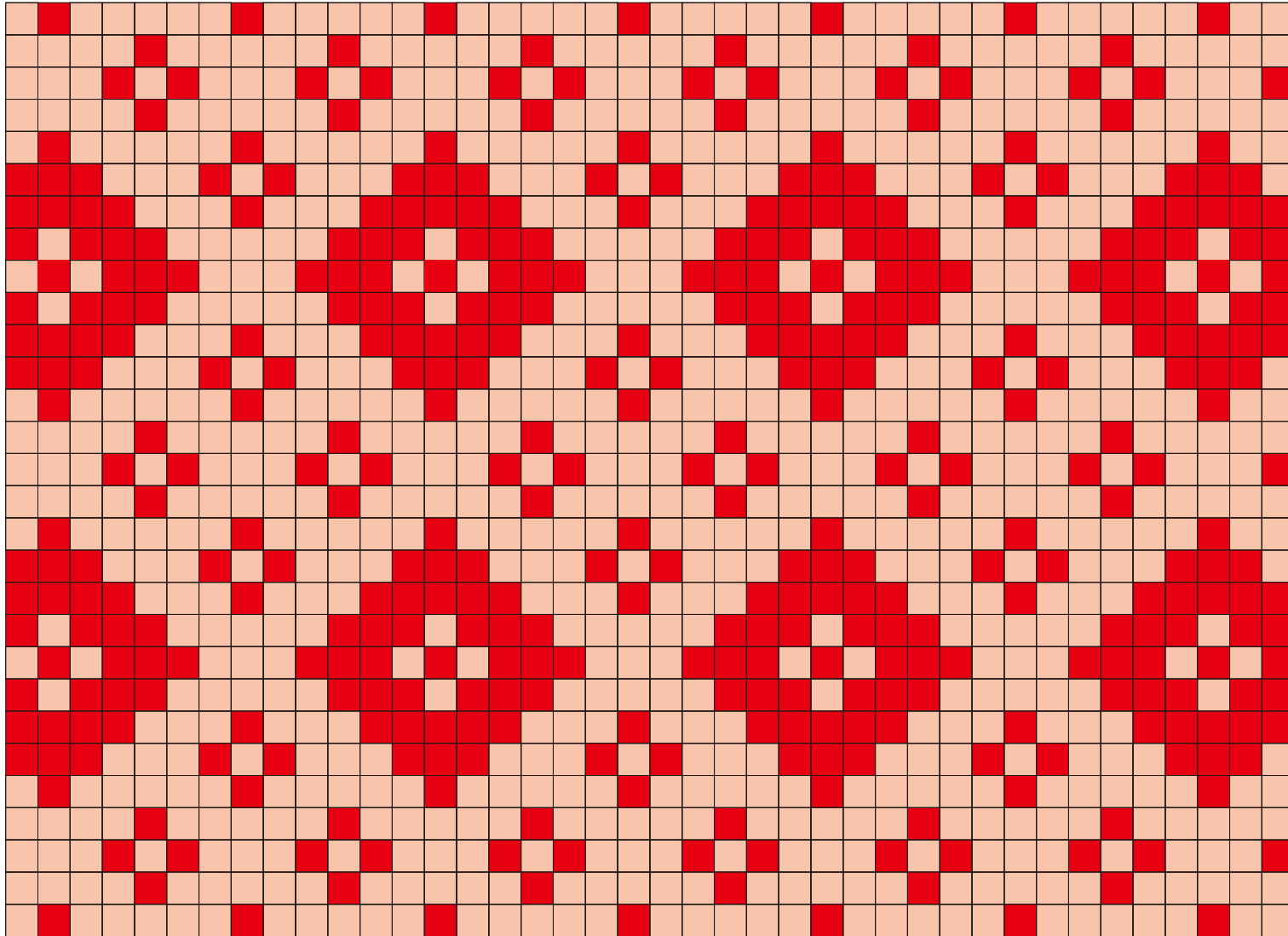
Very nice to the touch and delightful to work with.

<https://www.clover-mfg.com/product/4/130>



Pin cushion

40 39 38 37 36 35 34 33 32 31 30 29 28 27 26 25 24 23 22 21 20 19 18 17 16 15 14 13 12 11 10 9 8 7 6 5 4 3 2 1



Pin Cushion : pink/red

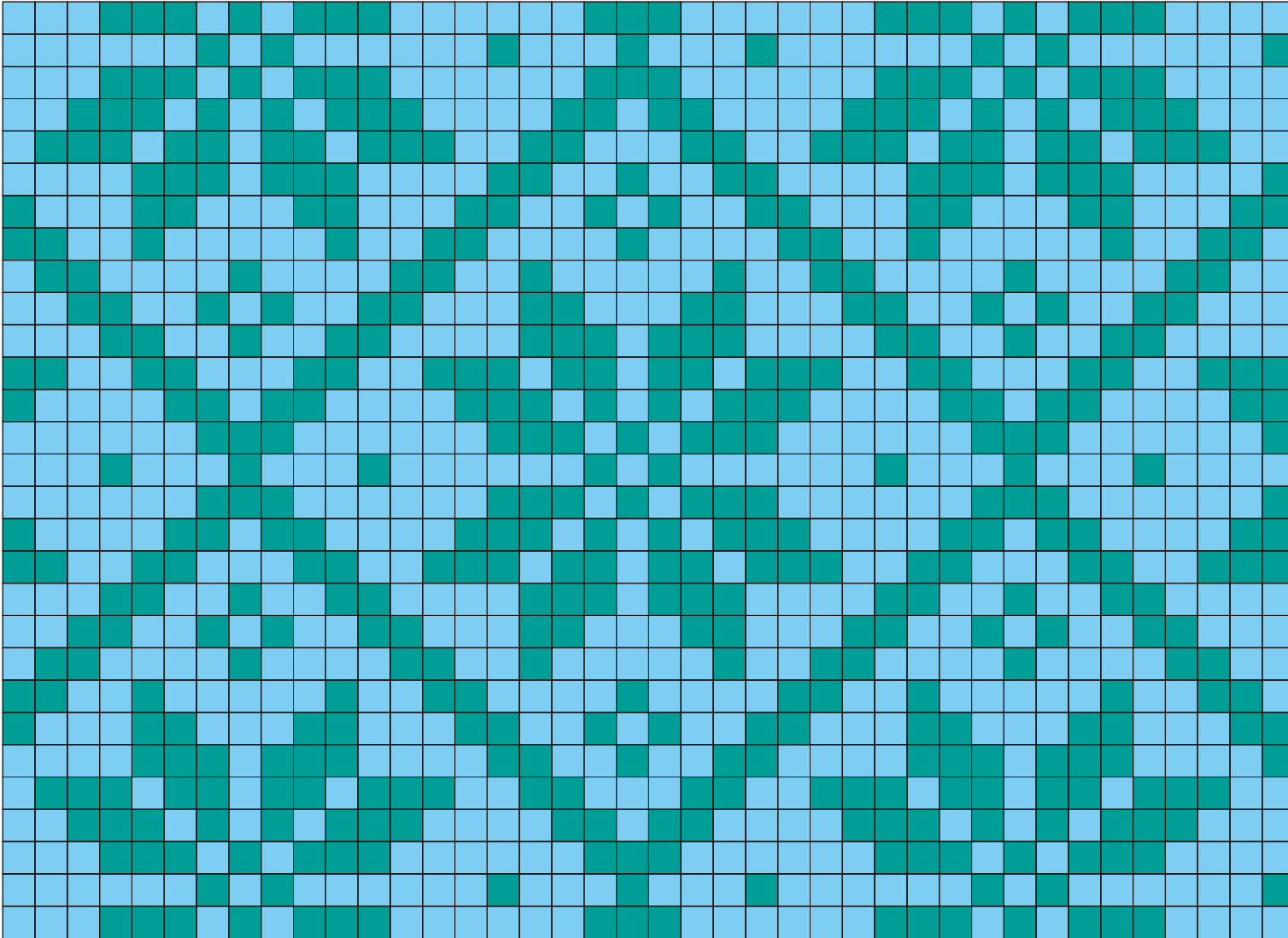
Key

- RS knit
- WS purl
- Yarn: first colour
- Yarn: second colour

40 39 38 37 36 35 34 33 32 31 30 29 28 27 26 25 24 23 22 21 20 19 18 17 16 15 14 13 12 11 10 9 8 7 6 5 4 3 2 1

Pin cushion

40 39 38 37 36 35 34 33 32 31 30 29 28 27 26 25 24 23 22 21 20 19 18 17 16 15 14 13 12 11 10 9 8 7 6 5 4 3 2 1



Pin Cushion : green/sky blue

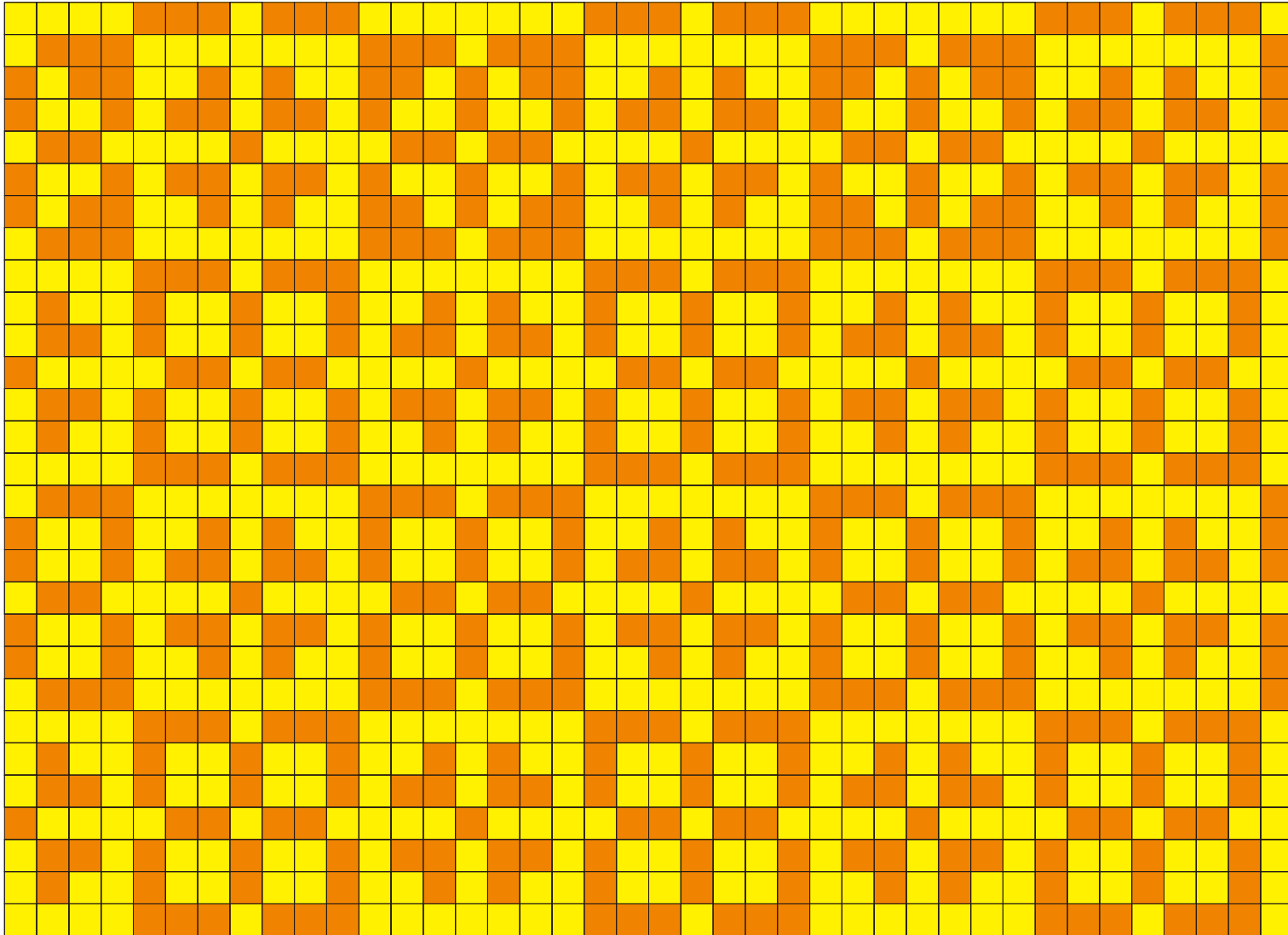
Key

- RS knit
WS purl
- Yarn: first colour
- Yarn: second colour

40 39 38 37 36 35 34 33 32 31 30 29 28 27 26 25 24 23 22 21 20 19 18 17 16 15 14 13 12 11 10 9 8 7 6 5 4 3 2 1

Pin cushion

40 39 38 37 36 35 34 33 32 31 30 29 28 27 26 25 24 23 22 21 20 19 18 17 16 15 14 13 12 11 10 9 8 7 6 5 4 3 2 1



Pin Cushion : yellow/orage

Key

- RS knit
WS purl
- Yarn: first colour
- Yarn: second colour

40 39 38 37 36 35 34 33 32 31 30 29 28 27 26 25 24 23 22 21 20 19 18 17 16 15 14 13 12 11 10 9 8 7 6 5 4 3 2 1