

# Pompon Cap



## Instructions

1. Long tail cast on 104 sts with a 4.0 mm needle, join in the round.  
Start and continue with k2, p2, etc on all rnds.

2. Change to 4.5 mm needle, k for 30 rnds.

Dec rnd1 : Rep (ssk, k11) to end

Next 2 rnds: k

Dec rnd2 : Rep (ssk, k10) to end

Next 2 rnds: k

Dec rnd3 : Rep (ssk, k9) to end

Next rnd: k

Dec rnd4 : Rep (ssk, k8) to end

Next rnd: k

Dec rnd5 : Rep (ssk, k7) to end

Next rnd: k

Dec rnd6 : Rep (ssk, k6) to end

Next rnd: k

Dec rnd7 : Rep (ssk, k5) to end

Next rnd: k

Dec rnd8 : Rep (ssk, k4) to end

Next rnd: k

Dec rnd9 Rep (ssk, k3) to end

Next rnd: k

Dec rnd10 : Rep (ssk, k2) to end

Next rnd: k

Remaining 24 sts

3. Cut yarn leaving a long end.  
Draw the end through rem sts

twice and fasten tight.

4. Make pompon and attach it  
to top of the cap.

## Stitch key

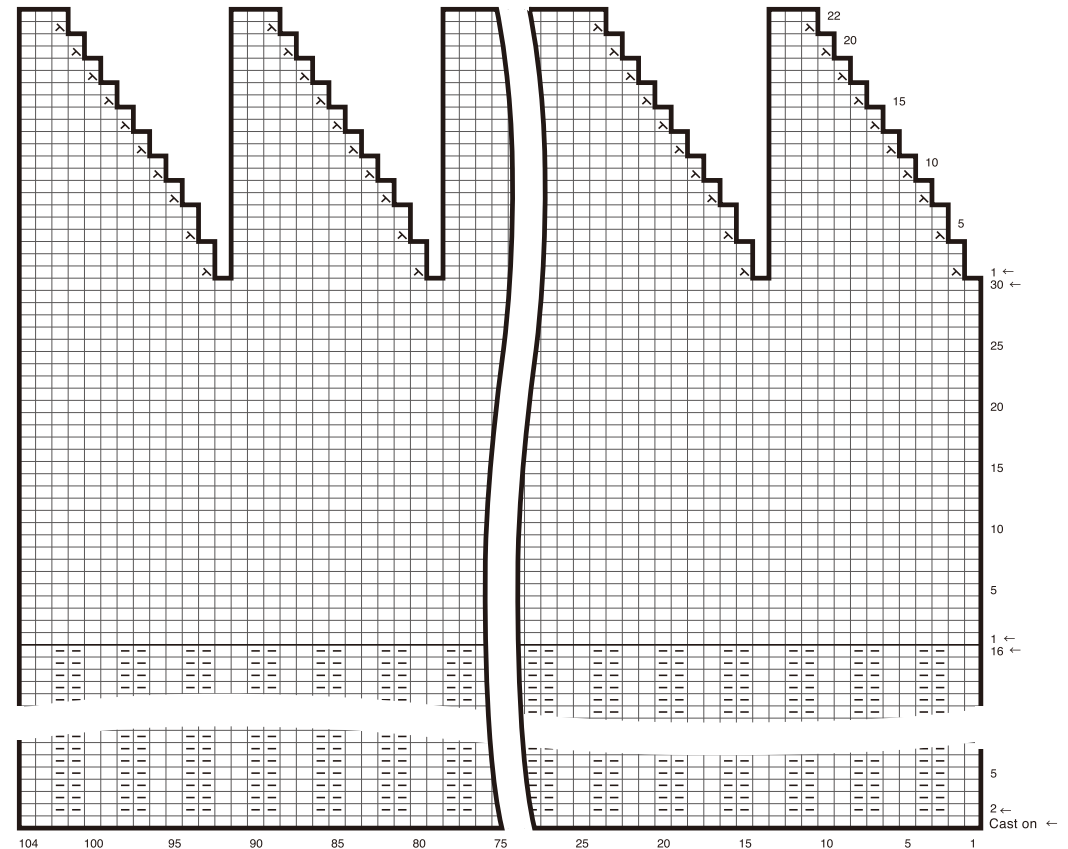
Knitting

□ = □ = k(knit)

▢ = p (purl)

⊗ = ssk (slip, knit, pass slipped stitch over)

## Instructions



## Design source

• Clover

## Finished size

• Approx. 52 cm head circumference,  
24.5 cm tall, laid flat.

## Materials

• DK weight yarn (108 m/40 g): 70 g

## Needles

- Bamboo Circular Knitting Needles Takumi (Art No.3869) (40 cm / 4 mm)
- Bamboo Circular Knitting Needles Takumi (Art No.3870) (40 cm / 4.5 mm)
- Bamboo Knitting Needles Takumi Double Pointed (Art No.3840)(20 cm/ 4.5 mm)

## Extras

- Pom-Pom Maker (Extra Large) (Art No. 3128), Darning needle

## Gauge

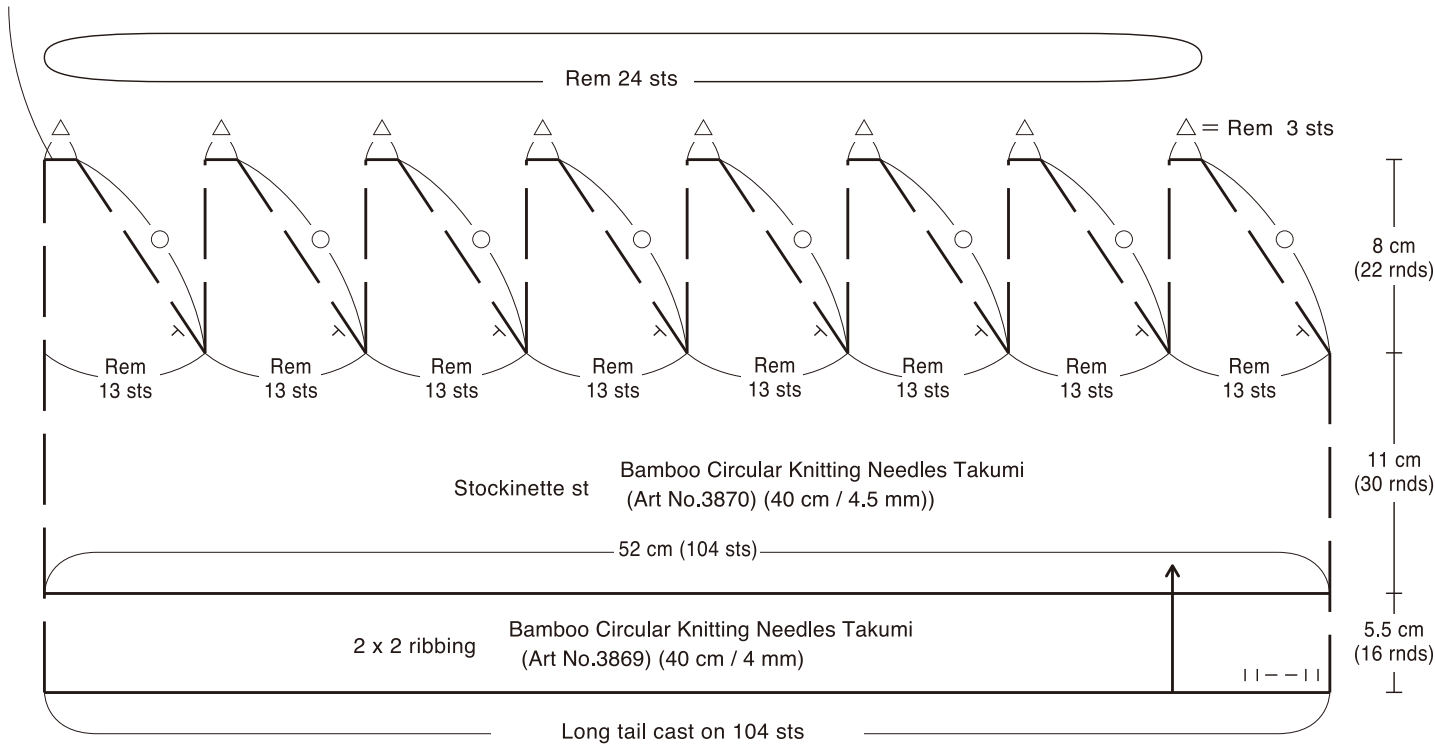
• 20 sts x 27 rows = 10 cm x 10 cm in St st

# Pompom Cap

Draw the yarn end through remaining stitches on the last row and fasten tight.

Keep number of stitches as previous rnd

$\triangle = 2 - 1 - 7$   
 $\circ = 3 - 1 - 2$   
 $\triangle = 1 - 1 - 1$  } Decrease



With Pom-Pom Maker (Extra Large) Art No.3128 (115 mm), make pom-pom winding 1ply yarn approximately 200 times. Attach it to top of the cap.

