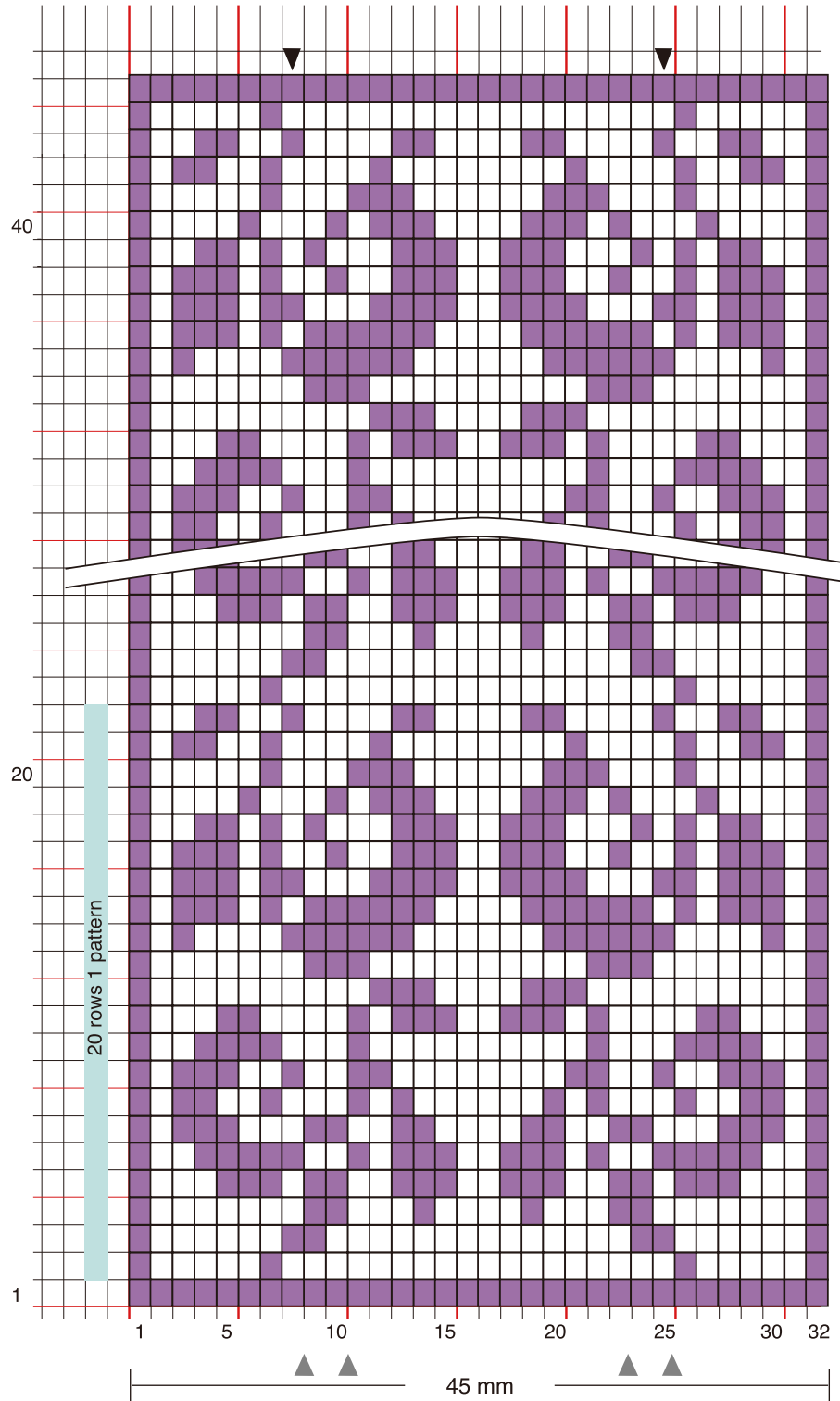


# Nordic Style B



### Tools

- Clover Beading Loom (Art No. 9910)

### Materials

- Cylinder beads
- Beading thread #60 (Polyester)

If making a bracelet, you will need Pearl bead (8 mm) x 2.

If making a bracelet, a line of purple is weaved, then weave to your desired length using the diagram on the right as a guide, (the product in the picture contains 5 patterns with a total of 102 rows) and finally another line of purple to finish. Attach it with a ball and loops, as described in "BEADING LOOM <Accessories>".

- ▼ Ball attachment position
- ▲ ▲ Loop attachment position