

# Nordic Style A

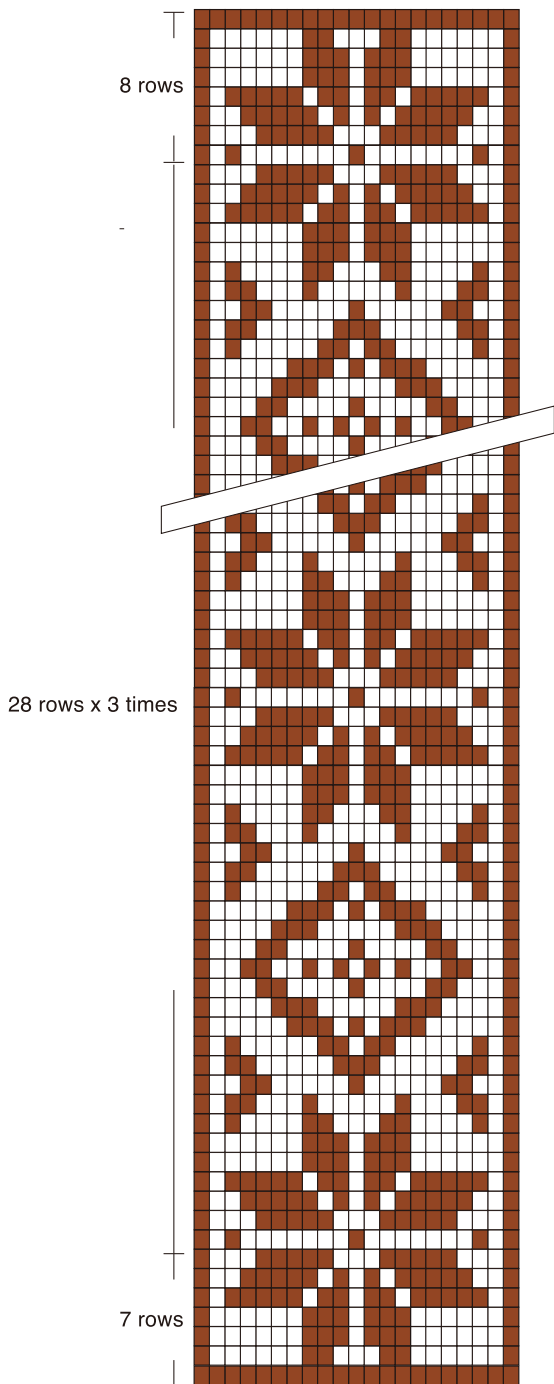
## Tools

- Clover Beading Loom (Art No. 9910)

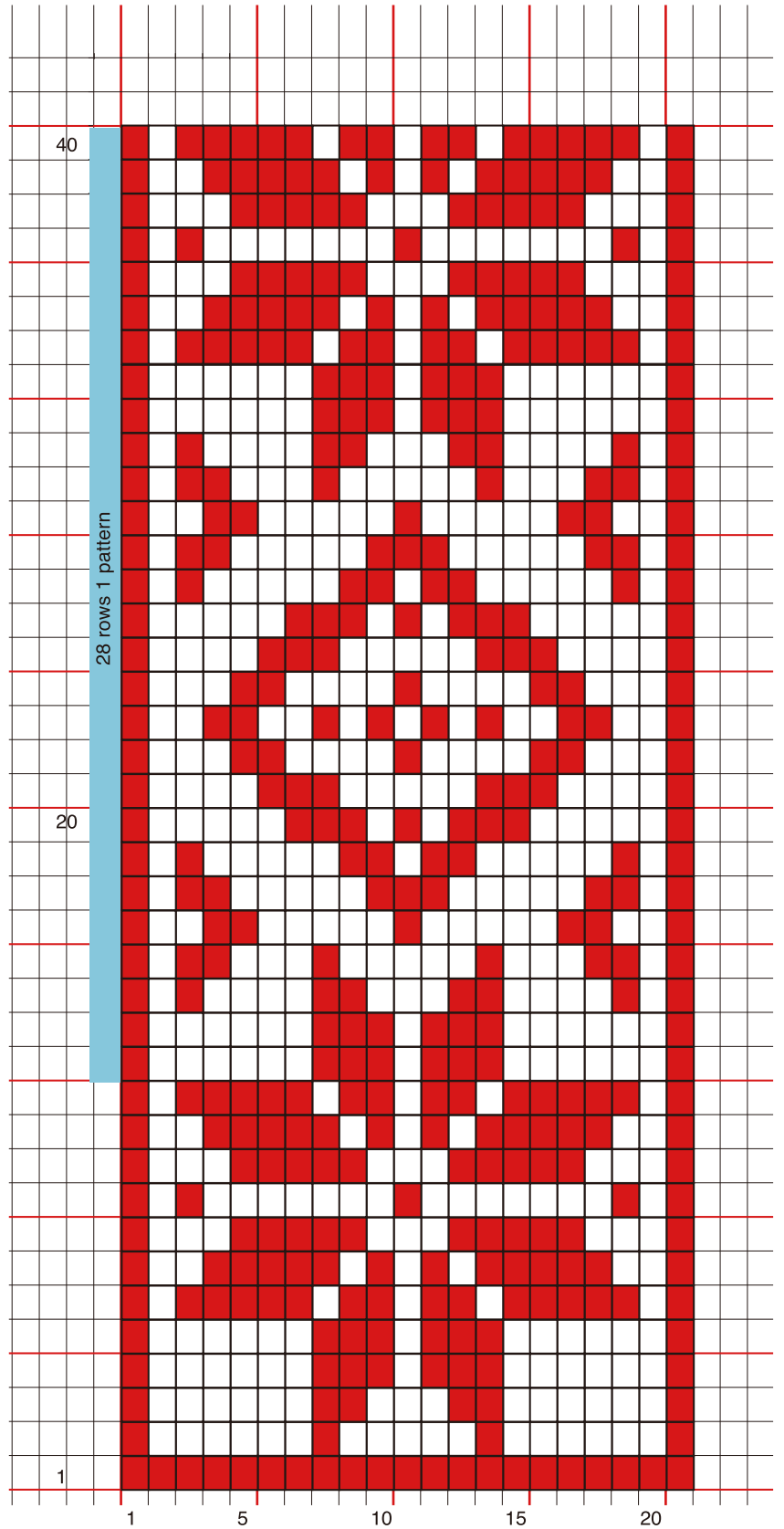
## Materials

- Cylinder beads
- Beading thread #60 (Polyester)

If making a bracelet, you will need Pearl bead (8 mm) x 1.



3 cm x 16.5 cm (without ball and loops)



If making a bracelet, weave to your desired length following the diagram, and attach a ball and loops following the instructions listed in "BEADING LOOM <Accessories>".