

Diagram A

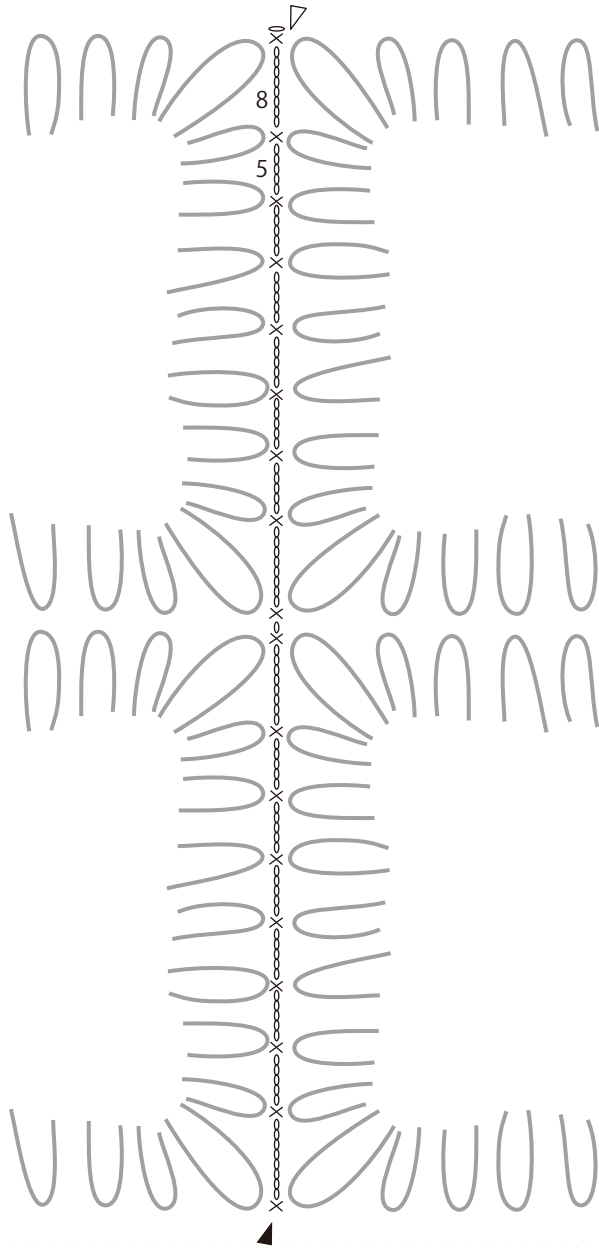
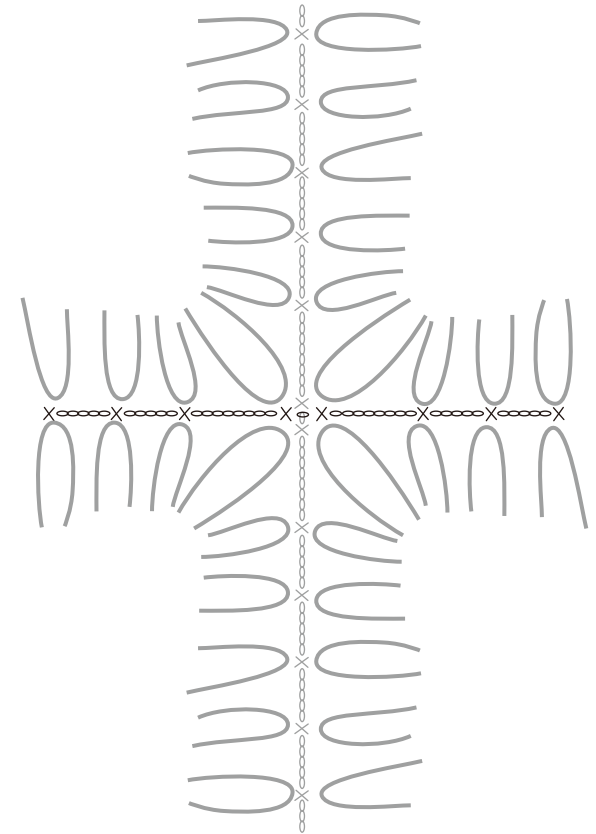
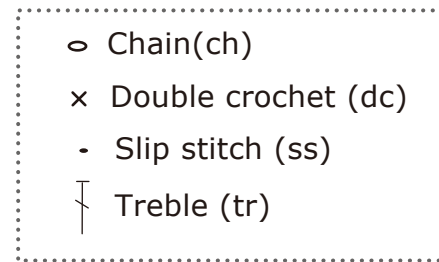


Diagram B



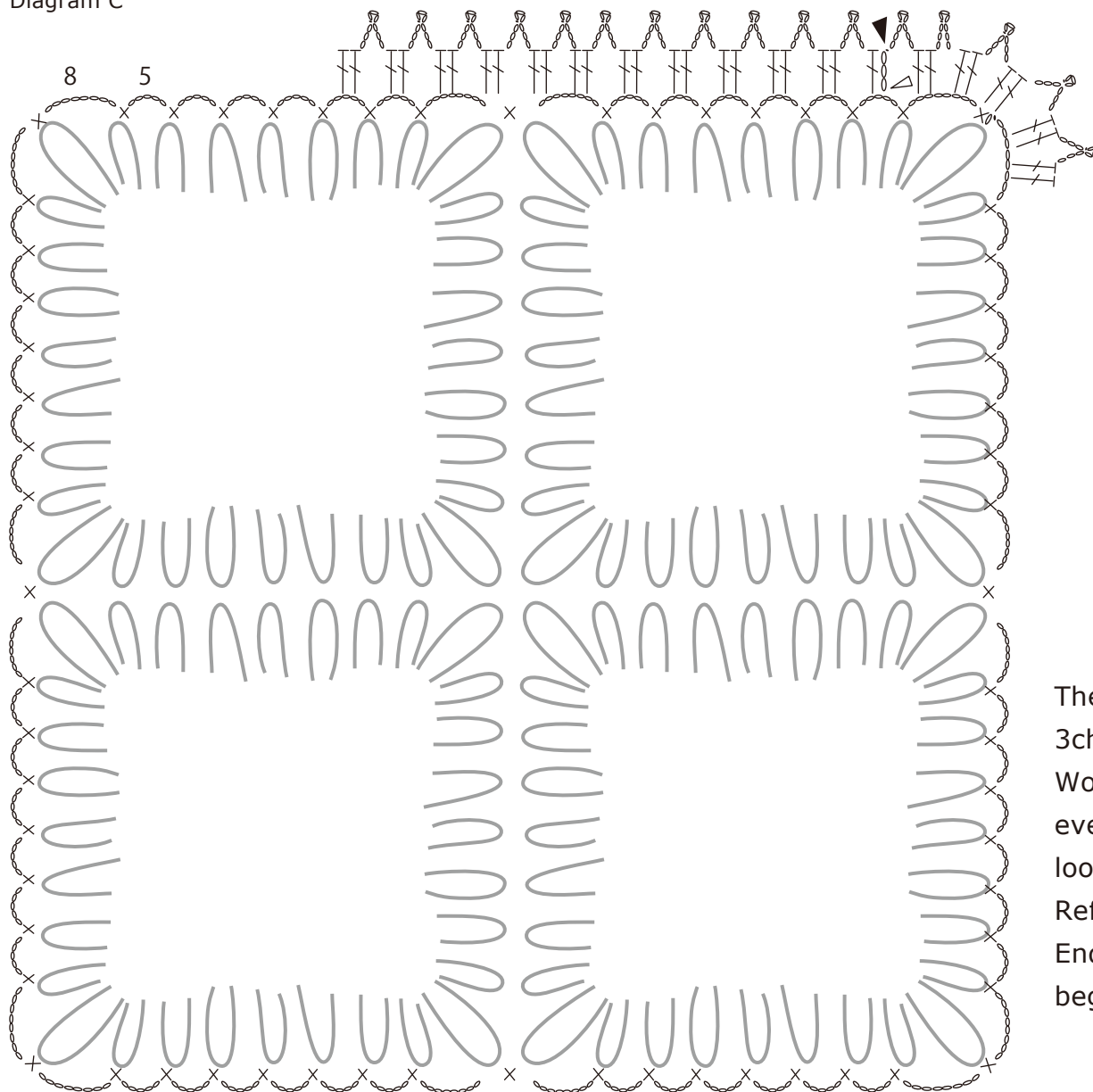
Crochet UK abbreviations

- Chain (ch)
- Double crochet (dc)
- Slip stitch (ss)
- Treble (tr)
- Space (sp)



Join B with a dc, connecting corner loops of two squares.
 Make 8 ch in corners of motif, 5ch in all other spaces
 between the loops.

Diagram C



Crochet UK abbreviations

Chain (ch)

Double crochet (dc)

Slip stitch (ss)

Treble (tr)

Space (sp)

○ Chain(ch)

× Double crochet (dc)

• Slip stitch (ss)

⏏ Treble (tr)

The outer edge: join B in 5ch space to the left of any corner, 3ch (counts as first tr), 1tr in same sp.

Work (4ch, ss in first ch from hook, 3ch, 2tr in sp) once in every 5ch sp, twice in every 8ch sp and once in each corner loop dc between two 8ch sp.

Refer to diagram 4.

End with 4ch, ss in first ch from hook, 3ch, ss in third of beginning 3ch to join.

