

# Mug Cosy



Designed by Sachiyo Ishii

Finished size: 7 x 24cm

## Tools

- 3.0mm Bamboo Knitting Needles **Takumi**<sup>®</sup> Single Pointed (23 cm) (Art No. 3705)
- Gold Eye Chenille Needles (No. 18) (Art No. 234/18)
- Patchwork Scissors Mini (Art No. 493/CW)
- Pom-Pom Maker (Extra Small) 25mm (Art No. 3127)

[Bamboo Knitting Needles Takumi<sup>®</sup> Single Pointed](#)



[Patchwork Scissors \(Mini\)](#)



[Gold Eye Chenille Needles \(No. 18\)](#)



[Pom-Pom Maker \(Extra Small\)](#)



## Materials

- Small amounts of 4-ply (fingering) weight yarn in [A] coral pink, [B] pastel pink, [C] dark pink
- 2cm button
- Cotton thread to sew button

## About yarn used for samples

- 4-ply weight, 50g per 226m, 55% Nylon, 45% Acrylic

## Tension

- 30 sts and 36 rows for a 10 x 10 cm tension square over St st

## Practical tips

- Leave a long end at the beginning and end of each piece for sewing

## <Abbreviations>

RS: right side

WS: wrong side

St st: stocking stitch

St(s): stitch(es)

K: knit

P: purl

Yf: yarn forward

K2tog: knit two together

# Mug Cosy

## <Knitting Instructions>

With yarn A, cast on 55 sts.

Row 1 (RS): [K1, p1] to last st, k1.

Row 2: [P1, k1] to last st, p1.

Rows 3 and 4: Repeat rows 1 and 2.

Join in yarn B.

Rows 5-23: Work the chart, starting with a k (RS) row and finishing with a k (RS) row.

Fasten off yarn B.

Change to yarn A.

Row 24 (WS): [P1, k1] to last st, p1.

Row 25: [K1, p1] to last st, k1.

Rows 26 and 27: Rep rows 24 and 25.

Cast off k-wise.

## Sides: work both sides the same

With RS facing and yarn A, pick up 18 sts along short edge, turn.

Rows 1-2: Starting with a p (WS) row, work 2 rows in St st.

Rows 3-6: K.

Cast off k-wise.

## Band

With yarn A, cast on 10 sts.

Rows 1-17: K.

Row 18 (buttonhole): K4, yf, k2tog, k4.

Rows 19-22: K.

Cast off k-wise.

## To make up

Weave in ends.

Sew non-buttonhole end of band to centre of one short edge of cosy.  
Sew button to opposite short edge of cosy to correspond with band buttonhole.

With yarn C and 25mm pompom maker, make two pompoms, leaving extra long tails when tying off the pompom centres.

Attach one tail to top corner of each side.

## Designer's Favorite

### Bamboo Knitting Needles Takumi® Single Pointed

These are perfect when you work a small toy project. They prevent the yarn from slipping and make the finish clean and neat.

Very nice to the touch and delightful to work with.

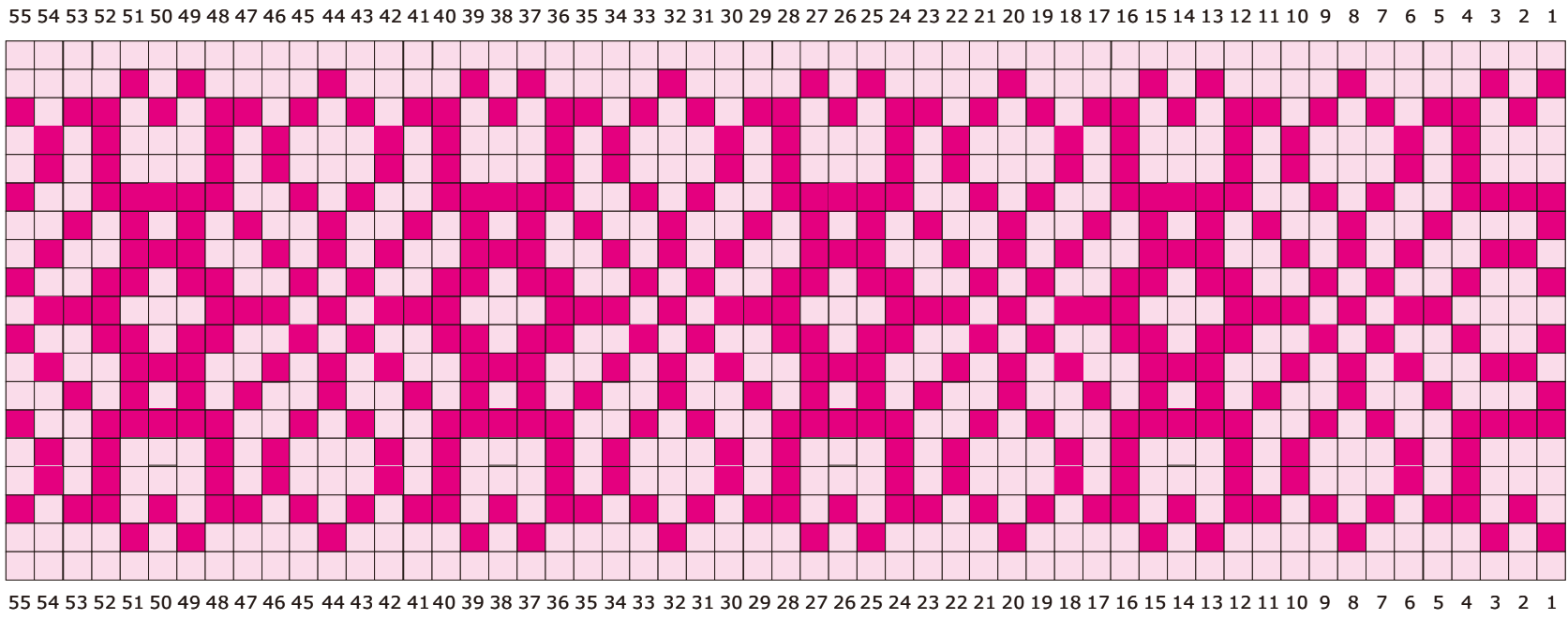
<https://www.clover-mfg.com/product/4/130>



# Mug Cosy

## Mag cosy

### Key



- RS knit  
WS purl
- Yarn B
- Yarn C