



Designed by Rosee Woodland



## PATTERN NOTES

This cape uses Clover circular needles, stitch markers and bent tip tapestry needle.

## SIZES

S (M: L)

To fit bust approx 76-91 (97-107: 112-127) cm  
 Finished lower edge circumference 147 (168: 189) cm  
 Length from top shoulder 38 (40: 40) cm  
 Depth of cowl neck 23.5cm  
 Circumference of cowl neck 63cm

## TOOLS

- Bamboo Circular Knitting Needles **Takumi**<sup>®</sup> 100cm/3.5mm
- Bamboo Circular Knitting Needles **Takumi**<sup>®</sup> 60cm/3.5mm
- Bamboo Circular Knitting Needles **Takumi**<sup>®</sup> 100cm/4.0mm
- Bamboo Circular Knitting Needles **Takumi**<sup>®</sup> 60cm/4.0mm
- Quick Locking Stitch Markers (Medium) (Art No. 3031)
- Tapestry Needle Set (Bent tip) (Art No. 3121)

## GAUGE

19 sts x 22 rounds to 10cm, worked over stocking stitch and stranded colourwork using 4mm needles

## YARN

West Yorkshire Spinners, The Croft Shetland Aran  
 (Aran, 100% wool, 100g/166m)  
 4 (5: 5) skeins in Main Colour (shown in Huxter/ pale blue)  
 1 skein in Contrast Colour (shown in Sullom/ cream)  
 Any pure wool or wool/alpaca blend yarn in an aran or worsted weight is suitable for this project

[Bamboo Circular Knitting Needles \*\*Takumi\*\*<sup>®</sup> \(100 cm\)](#)



[Bamboo Circular Knitting Needles \*\*Takumi\*\*<sup>®</sup> \(60 cm\)](#)



[Quick Locking  
Stitch Markers  
\(Medium\)](#)



[Tapestry Needle Set  
\(Bent tip\)](#)



---

**<Abbreviations>**

Beg beginning  
CC contrast colour  
K knit  
K2tog knit 2 stitches together. 1 stitch decreased  
MC main colour  
P purl  
Pm place marker  
Rep repeat  
RS right side  
st(s) stitch(es)  
WS wrong side

**Start knitting here...****CAPE**

Using longer 3.5mm circular needle and MC cast on 280 (320: 360) sts.  
Join to work in the round, being careful not to twist sts and place contrasting colour marker for beg of round.  
Rib round: \*K1, P1; repeat from \* to end of round.  
Repeat rib round another 7 times.  
Change to longer 4mm circular needle.

**BEGIN CHART**

Knit across Round 1 of chart to end, placing a marker every 70 (40: 30) sts.  
You should have 4 (8: 12) markers in total.

Join in contrast colour.

Work Rounds 2 to 44 (47: 47) of Poncho chart for your size, working pattern 4 (8: 12) times per round, and stranding colour not in use across the back of the work.  
On rounds when only one colour is in use you can carry unused colour up the side of the work on the wrong side at beginning of round, or break and rejoin colours as desired.  
Choose whichever option gives you the neatest result - different knitters will find one better than the other!

**SHAPE SHOULDERS**

Now continue working from Poncho chart until you have completed Round 80 (83: 83), decreasing as shown on chart, and changing to shorter 4mm circular needle when there are not enough sts to use the longer needle.

Note that the last two decrease rounds of chart are worked in MC only.  
If preferred, follow written pattern for these rounds as given below:

### Size S only

Decrease round 74: (K2tog, K5) 28 times. 168 sts.

Decrease round 79: \*(K2tog, K2, K2tog, K1) 4 times, (K2tog, K2) twice, (K2tog, K1) twice;  
rep from \* 3 more times. 120 sts.

### Size M only

Decrease round 77: (K2tog, K1, K2tog, K2) 32 times. 160 sts.

Decrease round 82: \*K2, K2tog, K3, K2tog, K1, (K2tog) twice, K3, K2tog, K1;  
rep from \* 7 more times. 120 sts

### Size L only

Decrease round 77: \*(K2tog, K2) 4 times, K2tog, K1, K2tog;  
rep from \* 11 more times. 180 sts.

Decrease round 82: \*K2, (K2tog) twice, (K1, K2tog) 3 times;  
rep from \* 11 more times. 120 sts

### All sizes

When Poncho chart is complete you should have 120 sts.

Cast off all sts firmly with MC but do not break yarn or fasten off final stitch.

***Now, with RS facing and MC, pick up and knit 119 sts around neck edge. 120 sts.  
Casting off and picking up sts gives a stable edge to prevent poncho stretching out  
over time - do not miss out this step!***

### WORK COWL NECK

Work Rounds 1 to 41 of Cowl chart, working pattern 12 times per round, and stranding colour not in use across the back of the work.

### NECK EDGING

Break CC and continue in MC only.

Change to shorter 3.5mm circular needle.

Rib round: \*K1, P1; repeat from \* to end of round.

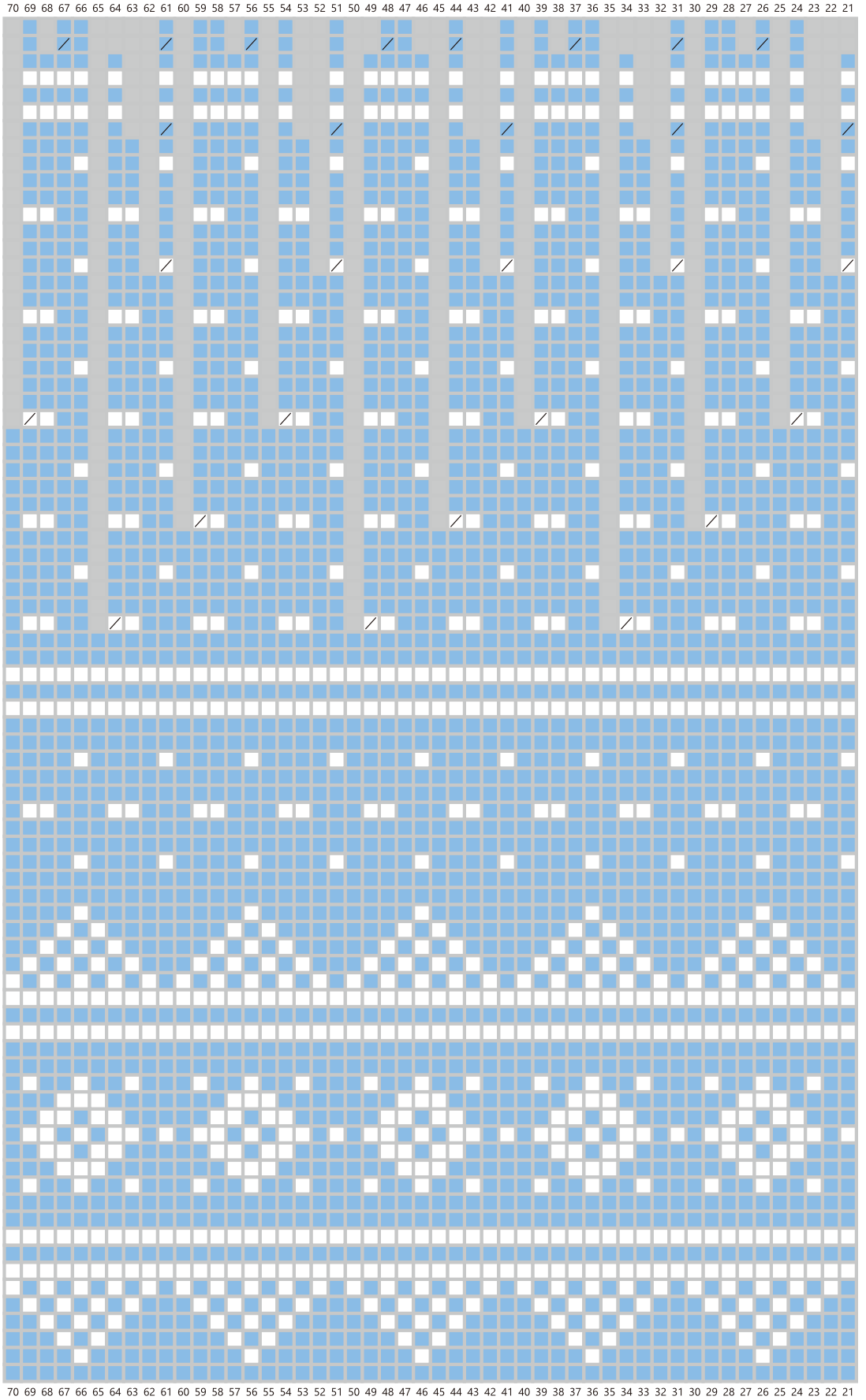
Repeat rib round another 6 times

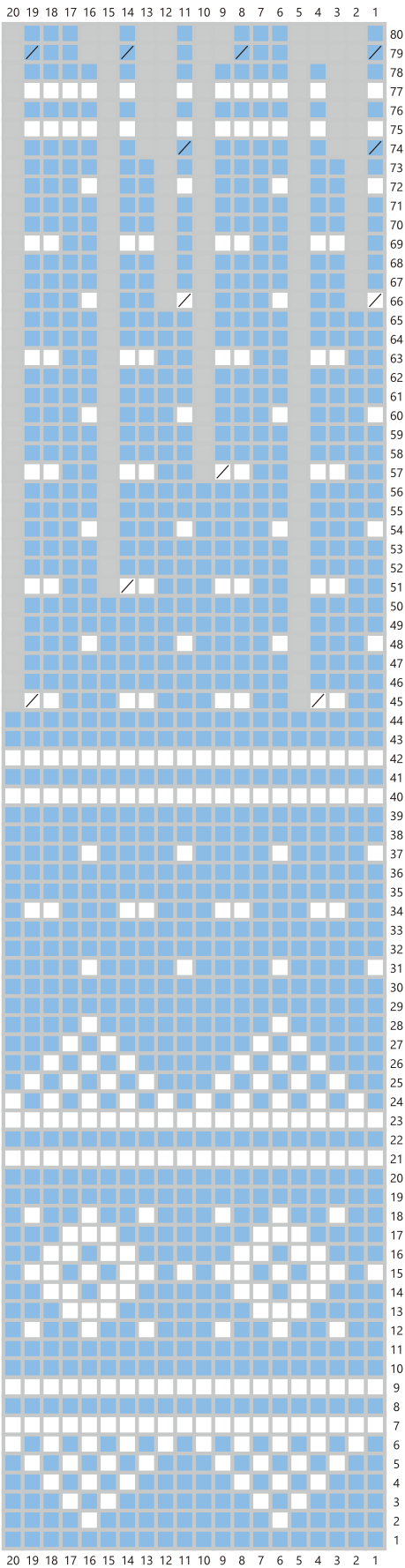
### MAKING UP

Weave in ends.

Block gently to even out fabric, but do not stretch.

# Cape



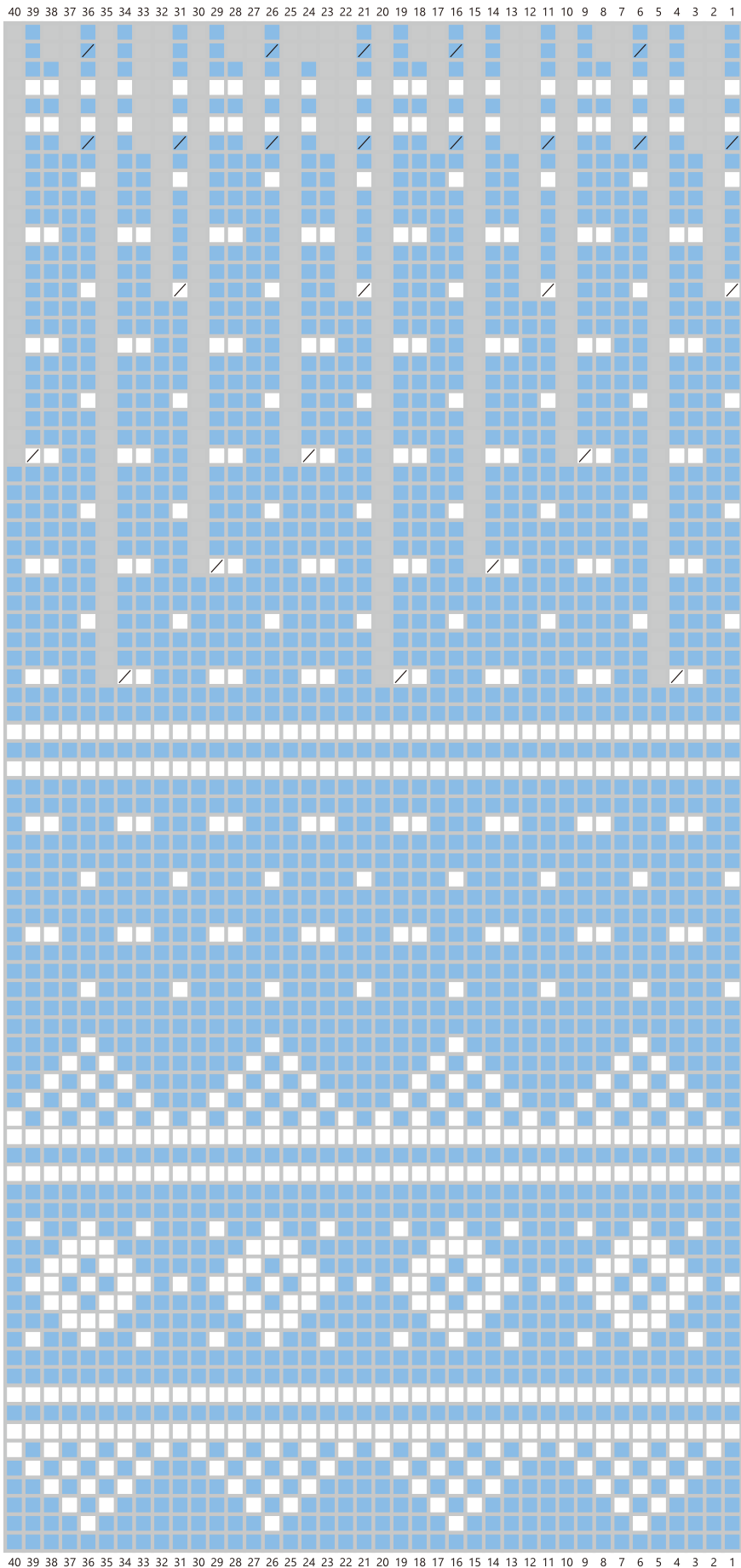


<Cape chart SMALL>

Key

-  knit
-  K2tog
-  MC
-  CC
-  no stitch

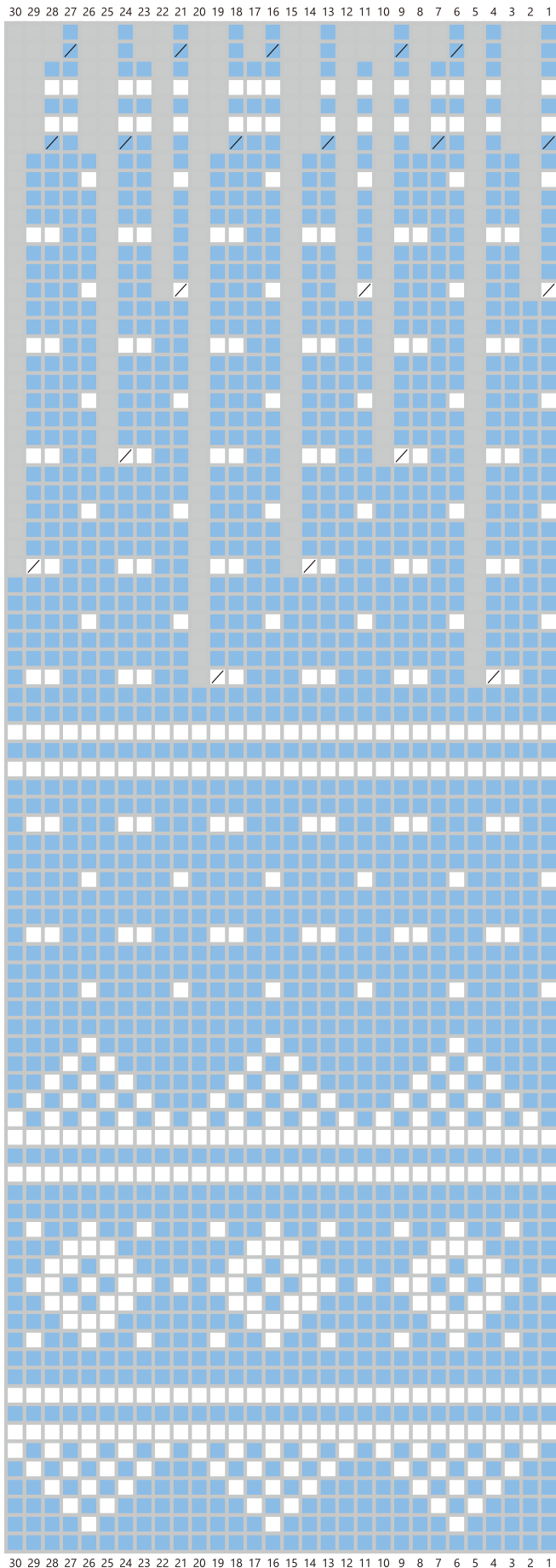
# Cape



<Cape chart MEDIUM>

Key

-  knit
-  K2tog
-  MC
-  CC
-  no stitch

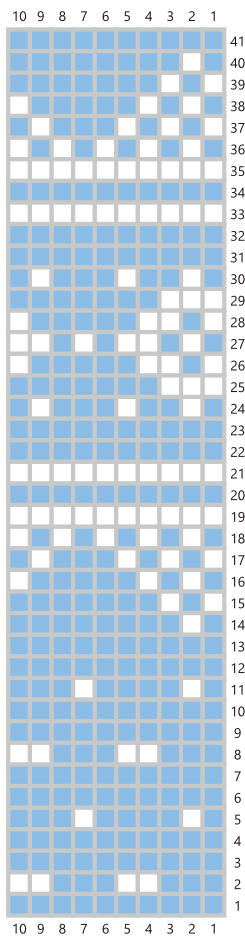


<Cape chart LARGE>

Key

-  knit
-  K2tog
-  MC
-  CC
-  no stitch

### <Cowl chart>



Key

-  knit
-  K2tog
-  MC
-  CC
-  no stitch