

Farmyard Finger Puppets <set A>



Designed by Sachiyo Ishii



Tools

- Bamboo Knitting Needles Takumi Single Pointed (23 cm) 3.0 mm (Art No. 3705)
- Gold Eye Chenille Needle(No. 18) (Art No. 234/18)
- Amour Crochet Hook 3.0 mm (Art No. 1052)
- scissors

Materials

Horse

- [A] 5g brown DK (8-ply)
- Small amount of 2 ply or 3 ply dark brown
- Small amount of 4-ply dark brown
- Card, cut to 2 x 6 cm
- Brown cotton thread
- Stuffing

Cow

- [B] 5g cream DK
- [C] Small amount of beige DK
- Small amount of black, light brown DK
- Stuffing

Duck

- [D] 5g white DK
- [E] Small amounts of 4-ply yellow
- Small amount of 4-ply dark brown

Chicken

- [C] 4g beige DK
- [E] Small amount of 4-ply yellow
- Small amount of red DK
- Small amount of 4-ply dark brown

Pig

- [F] 5g pink DK
- Small amount of 4-ply dark brown
- Stuffing

*About yarn used for samples

50g per 226m, 55% Nylon, 45% Acrylic
The project requires small amounts of different colours.
Feel free to use any oddments of yarn in DK weight.

*Tension

24 sts x 34 rows
= 10cm measured over St st (not essential)

<Abbreviations>

St st: stocking stitch

St(s): stitch(es)

K: knit

P: purl

Kfb: k one through the front then through the back (same stitch)

K2tog: knit two together

P2tog: purl two together

Skpo: slip1stitch, k1, pass slipped stitch over

WS: wrong side

RS: right side

Farmyard Finger Puppets <set A>



Horse

Body and head

With A, cast on 20 sts.

Rows 1-2: Knit

Rows 3-18: Starting with a RS k row, work 16 rows in St st.

Row 19: K5, k2tog, k6, k2tog, k5. 18 sts

Rows 20-22: Starting with a WS p row, work 3 rows in St st.

Row 23: [K1, k2tog] to end. 12 sts

Rows 24-32: Starting with a WS row, work 9 rows in St st.

Row 33: [K1, k2tog] to end. 8 sts

Break yarn, draw through sts, pull tightly and fasten off.

Ears: make two

With A, cast on 3 sts.

Row 1 (WS): P1, p2tog. 2 sts

Row 2: Skpo and fasten off.

Mane

Wind 2 or 3 ply dark brown yarn around card cut to 2 x 6cm 50 times.

Sew centre twice over same line with cotton thread, together with card.

Cut sides, tear card from centre and release card.

To make up

With fastened-off yarn end, seam body and stuff top end for head.

With seam on tummy side, stitch chin to neck, using a few ladder stitches.

Attach ears at their cast-on edges.

With 4-ply dark brown, French knot the eyes and make small backstitches for nostrils. With 4-ply brown, attach mane, sewing over cotton thread.



Pig

Body and head

With F, work as for Horse to row 31.

Row 32 (WS): Knit for snout edge.

Row 33: [K2tog] to end.

Break yarn, draw through sts, pull tightly and fasten off.

Ears: make two

With F, cast on 3 sts.

Row 1(WS): Skpo, k1. 2 sts

Row 2: P2tog

Fasten off.

To make up

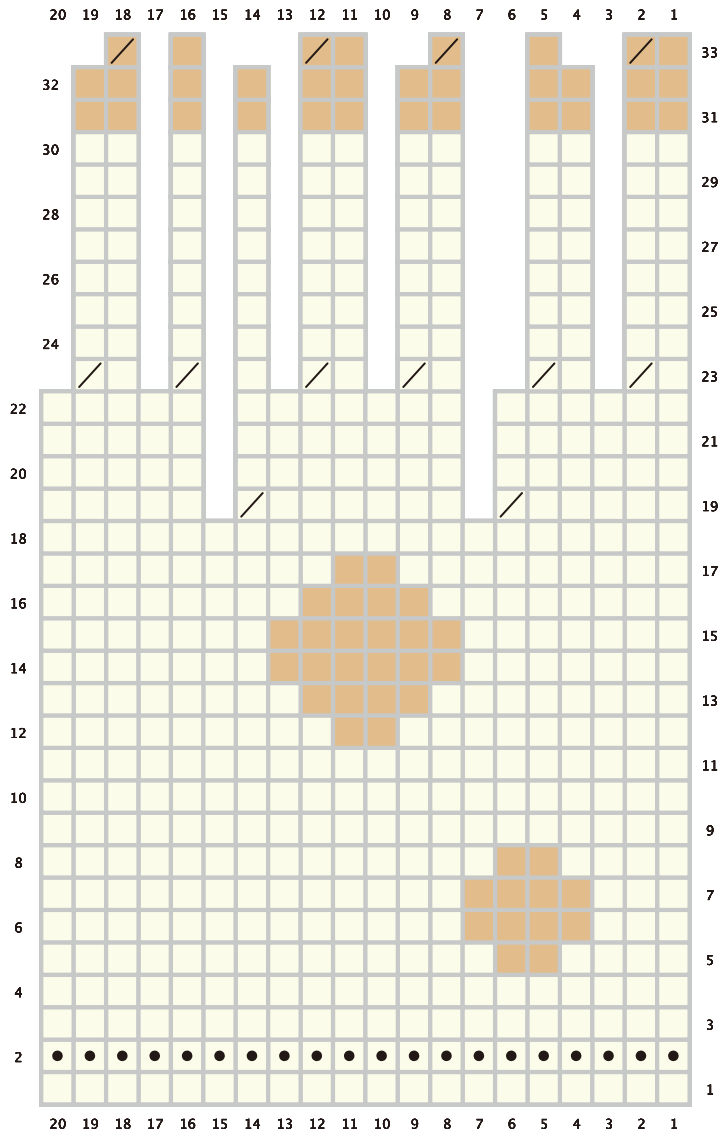
See Horse for basic assembly.

Attach cast-on edge of ears to head.

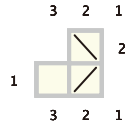
With 4-ply dark brown, French knot the eyes and embroider nostrils with short backstitches.

Farmyard Finger Puppets <set A>

Cow Body and Head



Cow Ears (make two)



Cow

Body and head

With B, cast on 20 sts.

Rows 1-2: Knit.

Work rows 3-18 following the chart, starting with a RS row.

Row 19: K5, k2tog, k6, k2tog, k5. 18 sts

Rows 20-22: Starting with a WS row, work 2 rows in St st.

Row 23: [K1, k2tog] to end. 12 sts

Rows 24-30: Starting with a WS row, work in 7 rows in St st.

Rows 31-32: Change to C and work 2 rows in St st.

Row 33: [K1, k2tog] to end. 8 sts

Break yarn, draw through sts, pull tightly and fasten off.

Ears: make two

With B, work as for Horse.

Horn

With light brownDK, cast on 8 sts. Cast off all sts.

Nose ring

With a crochet hook and light brown DK, make 5chains. Fasten off.

To make up

See Horse for basic assembly. Attach ears and horn to head.

With C, wrap middle of horn a few times.

With black DK, French knot the eyes.

Use ends of Nose Ring chain to attach it to muzzle to form a nose ring.



Farmyard Finger Puppets <set A>



Chicken

Body and head

With C, cast on 20 sts.

Rows 1-2: Knit.

Rows 3-12: Starting with a RS k row, work 10 rows in St st.

Row 13: [K2, k2tog] to end. 15 sts

Rows 14-16: Starting with a WS p row, work 3 rows in St st.

Row 17: [K1, k2tog] to end. 10 sts

Rows 18- 20: Starting with a WS p row, work 3 rows in St st.

Break yarn, draw through sts, pull tightly and fasten off.

Beak

With E, cast on 4 sts.

Row 1 (WS): [P2tog] twice. 2 sts

Row 2: Skpo and fasten off.

Wings: make two

With C, cast on 12 sts.

Rows 1-2: Starting with a WS p row, work 2 rows in St st.

Row 3: [P2, p2tog] to end. 9 sts

Rows 4-6: Starting with a RS k row, work 3 rows in St st.

Row 7: [P1, p2tog] to end. 6 sts

Row 8: Knit.

Break yarn, draw though sts, pull tightly and fasten off.

Tail

With C, cast on 10 sts.

Row 1 (RS): K2, [p2, k2] to end.

Row 2: P2, [k2, p2] to end.

Row 3: K2tog, [p2tg, k2tog] to end. 5 sts

Row 4: P1, [k1, p1] to end.

Break yarn, draw through sts, pull tightly and fasten off.

To make up

Seam body. Do not stuff. With red DK, backstitch comb and wattles, leaving small loops.

Attach cast-on edge of beak to face.

With 4-ply dark brown, French knot the eyes.

Seam and attach wings. Attach tail.

Farmyard Finger Puppets <set A>



Duck

Body and head

With D, cast on 20 sts.

Rows 1-2: Knit.

Rows 3-14: Starting with a RS k row, work 12 rows in St st.

Row 15: [K2, k2tog] to end. 15 sts

Rows 16-18: Beg with a WS p row, work 3 rows in St st.

Row 19: [K1, k2tog] to end. 10 sts

Rows 20-25: Beg with a WS p row, work 6 rows in St st.

Break yarn, draw through sts, pull tightly and fasten off.

Beak

With E, cast on 6 sts.

Row 1 (WS): Purl.

Row 2: Skpo, k to last 2 sts, k2tog. 4 sts

Row 3: [K2tog] twice. 2 sts

Pass the first st over the second and fasten off.

Wings: make two

With D, cast on 12 sts.

Rows 1-3: Starting with a p WS p row, work 3 rows in St st.

Row 4: [K2, k2tog] to end. 9 sts

Rows 5-8: Starting with a p WS row, work 4 rows in St st.

Row 9: [P1, p2tog] to end. 6 sts

Row 10: Knit.

Row 11: [P2tog] to end. 3 sts

Break yarn, draw through sts, pull tightly and fasten off.

To make up

Seam body. Do not stuff. Attach cast-on edge of beak to face.

Seam and attach wings. With 4-ply dark brown, French knot the eyes.

