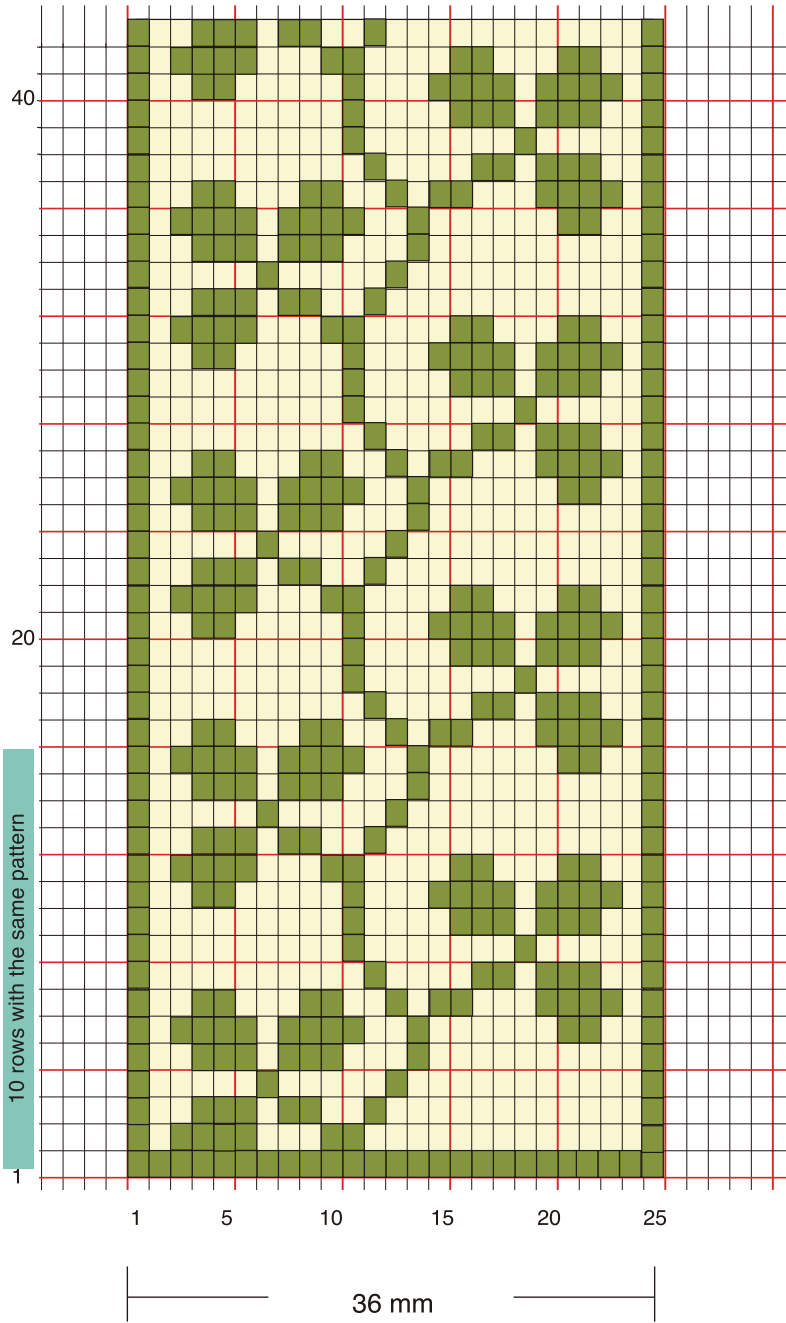
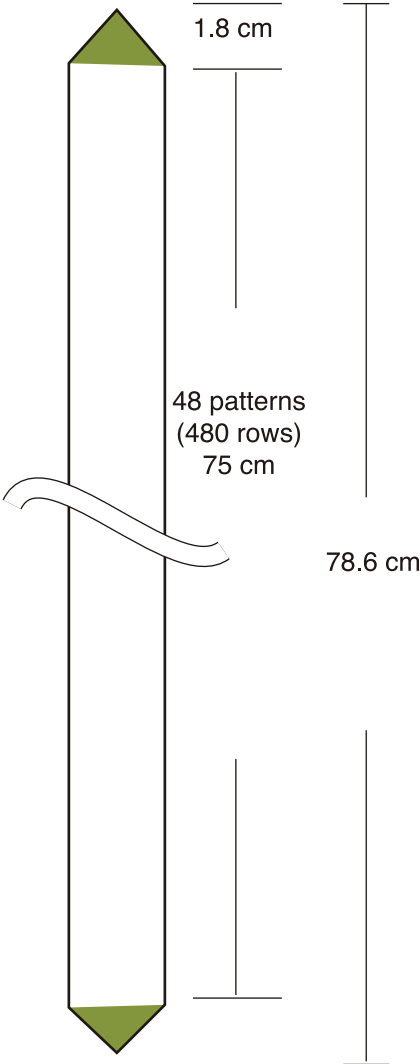
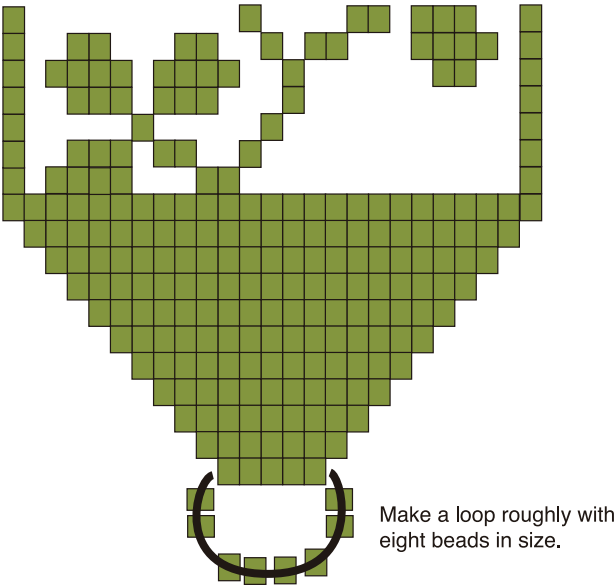




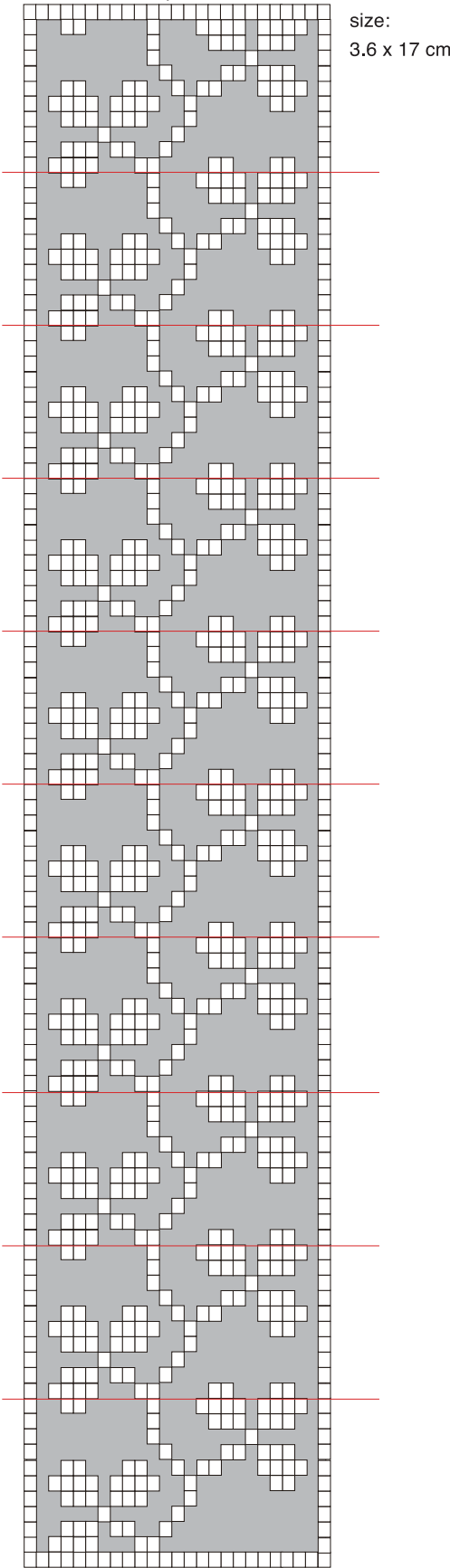
# Nordic Style D



To make a neck strap, please refer to the image below.  
 Make a triangle shape at the both of start and finish of weaving.  
 Attach a loop to both before adding your strap.



If making a bracelet, refer to the following diagram.  
 Check “BEADING LOOM <Accessories>”  
 on how to make the loop and ball.



1 row + 10 rows x 10 patterns + 1 row = 102 rows