



US8 / UK10

US6 / UK8

US4 / UK6

Pattern Paper (A)-1 for Dress and Tunic Print each page at 100% on A4 paper.

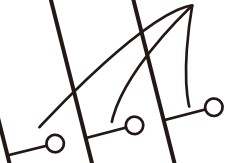


This pattern paper (A) is formed by joining 4 pages (1-4) to create one single pattern piece. Connect by matching the marks ★ together.

*Seam allowance is not included.

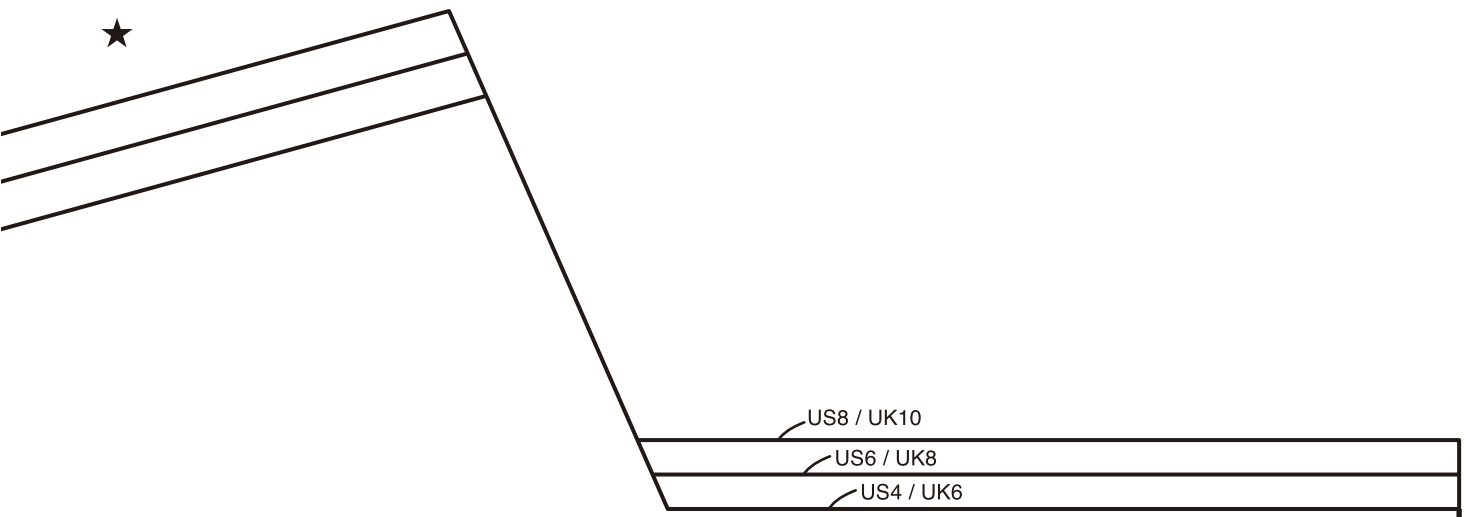
Consult the cutting diagram in the instructions to see where to add the seam allowance.

Dress sleeve gathers stop



Tunic string placement





Pattern Paper (A)-2 for Dress and Tunic
Print each page at 100% on A4 paper.

! This pattern paper (A) is formed by joining 4 pages (1-4) to create one single pattern piece.
 Connect by matching the marks ★ together.

*Seam allowance is not included.
 Consult the cutting diagram in the instructions to see where to add the seam allowance.

Front Yoke (Tunic)
Front Body (Dress)

Center Front
(Cut on the fold)


Cut here for Tunic





Pattern Paper (A)-3 for Dress and Tunic

Print each page at 100% on A4 paper.

 This pattern paper (A) is formed by joining 4 pages (1-4) to create one single pattern piece. Connect by matching the marks ★ together.

*Seam allowance is not included.
Consult the cutting diagram in the instructions to see where to add the seam allowance.

US8 / UK10

US4 / UK6

US6 / UK8

Cut here for Dress





Pattern Paper (A)-4 for Dress and Tunic

Print each page at 100% on A4 paper.



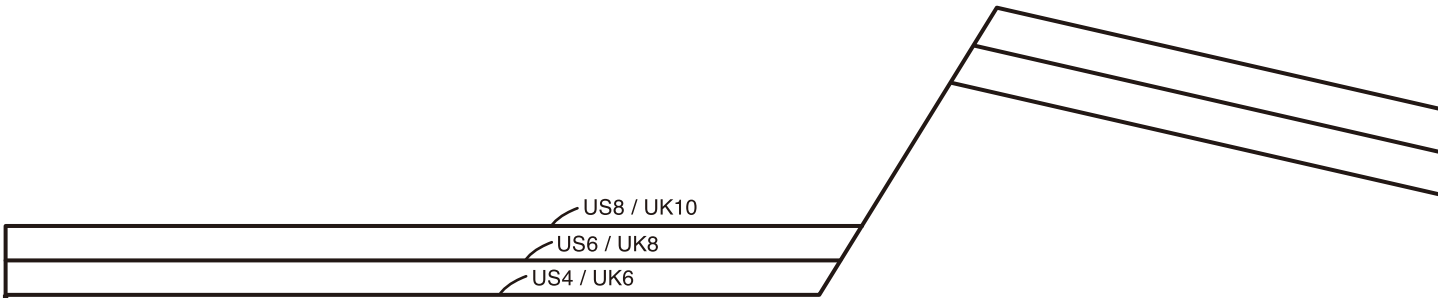
This pattern paper (A) is formed by joining 4 pages (1-4) to create one single pattern piece.

Connect by matching the marks ★ together.

*Seam allowance is not included.

Consult the cutting diagram in the instructions to see where to add the seam allowance.





Pattern Paper (B)-1 for Dress and Tunic
Print each page at 100% on A4 paper.

! This pattern paper (B) is formed by joining 4 pages (1-4) to create one single pattern piece. Connect by matching the marks ♥ together.

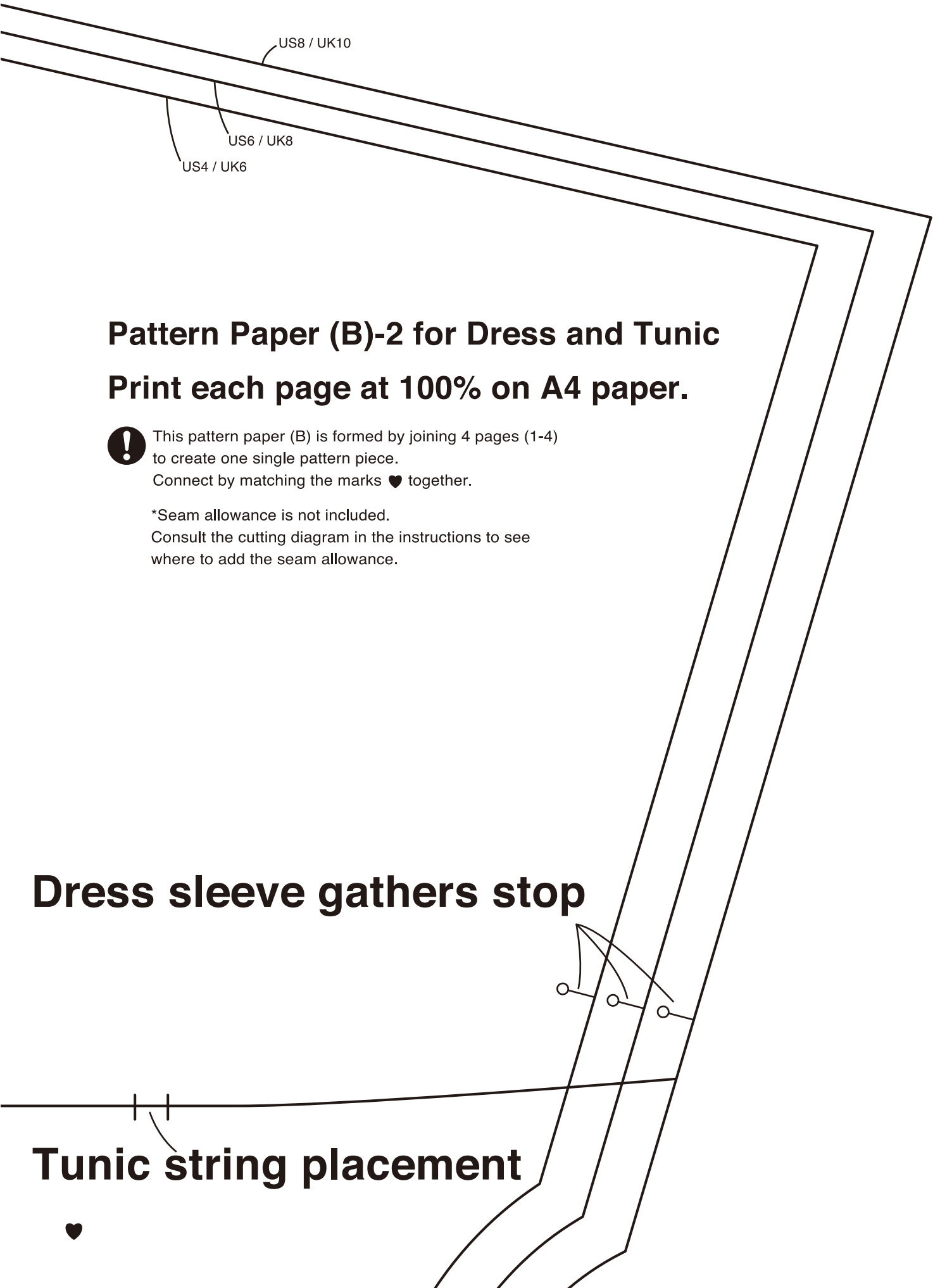
*Seam allowance is not included. Consult the cutting diagram in the instructions to see where to add the seam allowance.

Rear Yoke (Tunic)
Back Body (Dress)

Center Back
(Cut on the fold)

Cut here for Tunic





Pattern Paper (B)-2 for Dress and Tunic

Print each page at 100% on A4 paper.



This pattern paper (B) is formed by joining 4 pages (1-4) to create one single pattern piece.

Connect by matching the marks ♥ together.

*Seam allowance is not included.

Consult the cutting diagram in the instructions to see where to add the seam allowance.

Dress sleeve gathers stop



Tunic string placement





Pattern Paper (B)-3 for Dress and Tunic

Print each page at 100% on A4 paper.



This pattern paper (B) is formed by joining 4 pages (1-4) to create one single pattern piece.

Connect by matching the marks ♥ together.

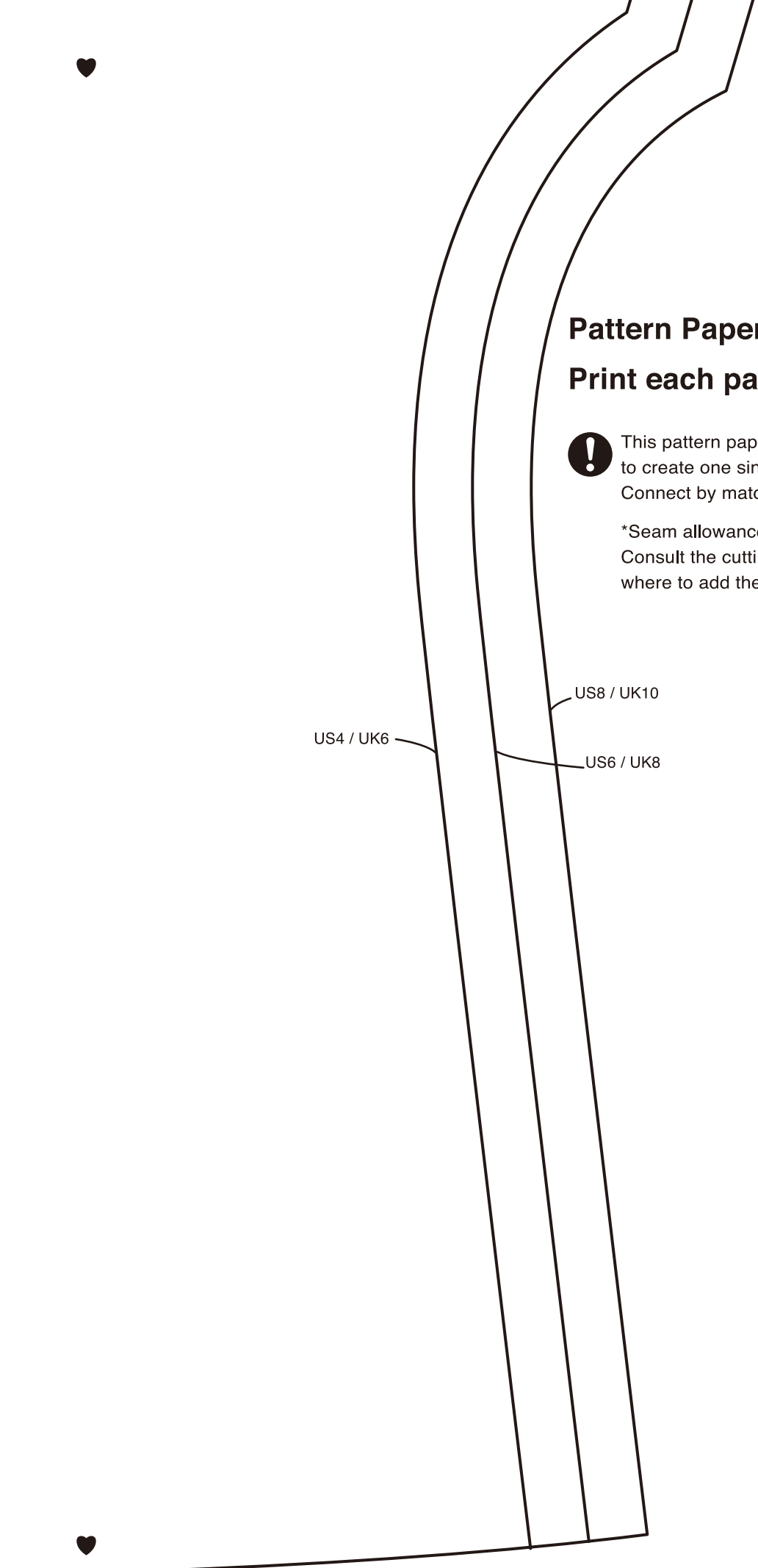
*Seam allowance is not included.

Consult the cutting diagram in the instructions to see where to add the seam allowance.



Cut here for Dress





Pattern Paper (B)-4 for Dress and Tunic

Print each page at 100% on A4 paper.



This pattern paper (B) is formed by joining 4 pages (1-4) to create one single pattern piece.

Connect by matching the marks ♥ together.

*Seam allowance is not included.

Consult the cutting diagram in the instructions to see where to add the seam allowance.

US4 / UK6

US8 / UK10

US6 / UK8



Pattern Paper (C)-1 for Dress and Tunic

Print each page at 100% on A4 paper.

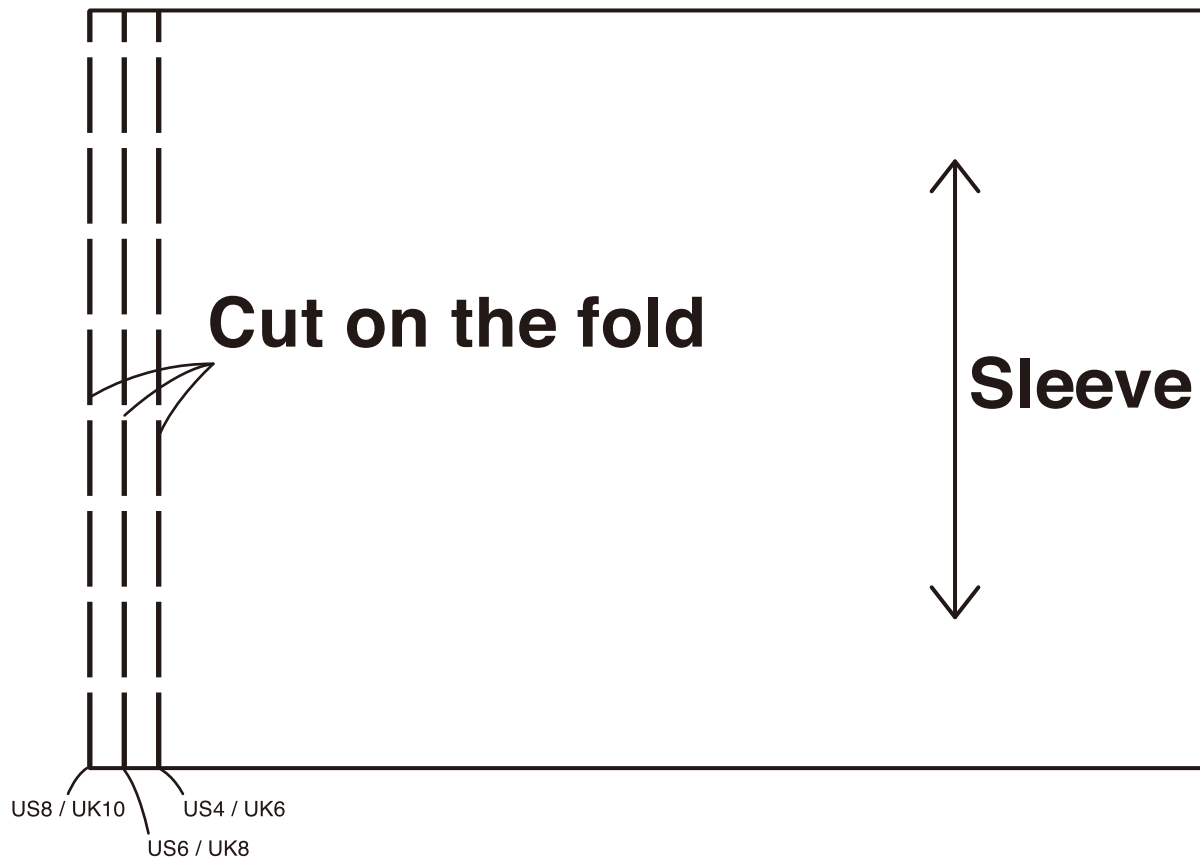
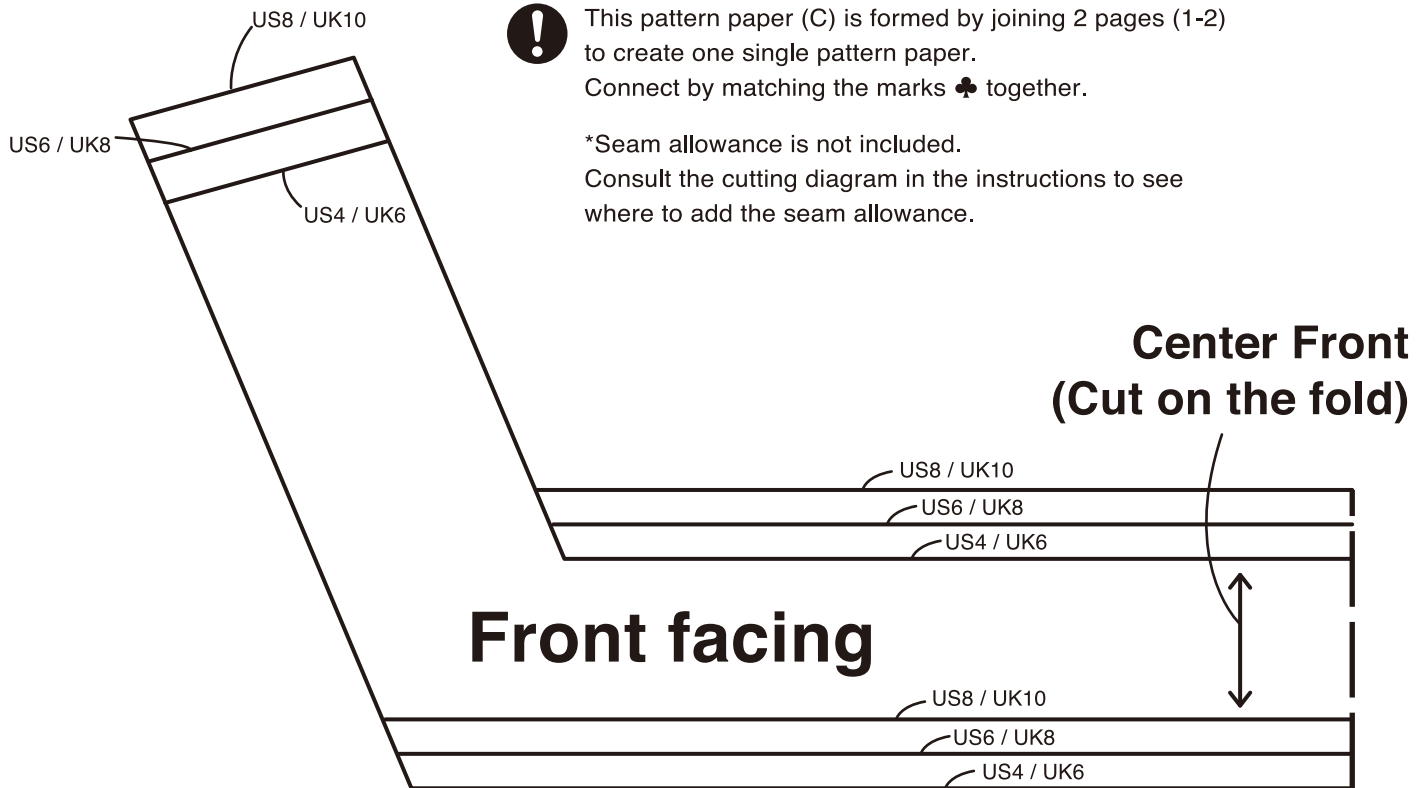


This pattern paper (C) is formed by joining 2 pages (1-2) to create one single pattern paper.

Connect by matching the marks ♣ together.

*Seam allowance is not included.

Consult the cutting diagram in the instructions to see where to add the seam allowance.



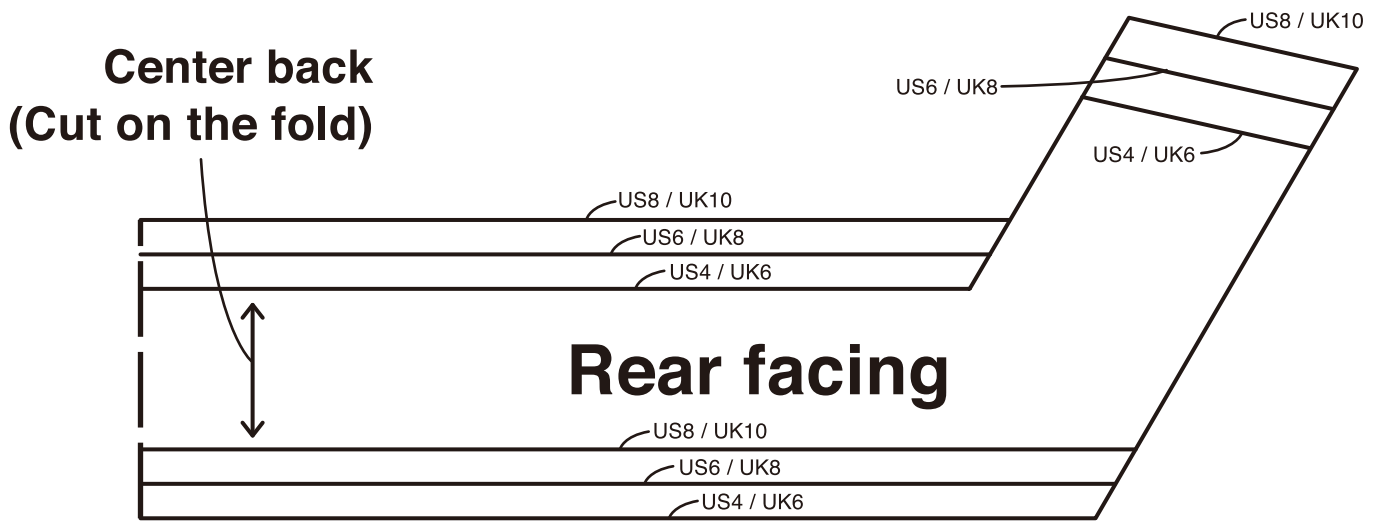


Pattern Paper (C)-2 for Dress and Tunic

Print each page at 100% on A4 paper.

! This pattern paper (C) is formed by joining 2 pages (1-2) to create one single pattern paper.
Connect by matching the marks ♣ together.

*Seam allowance is not included.
Consult the cutting diagram in the instructions to see where to add the seam allowance.



Gather

Gathers stop

US4 / UK6
US8 / UK10
US6 / UK8

