

# Floral Bouquet



## Tools

- "QUICK" Yo-Yo Maker
- Art No. 8702 <Extra Small>
- Art No. 8703 <Extra Large>
- Art No. 8708 <Jumbo>

## Material

- Organdy/ Linen
- for Yo-Yo <Extra Small> approx. 5 cm x 5 cm for 1 pc.
- for Yo-Yo <Extra Large> approx. 15 cm x 15 cm for 1 pc.
- for Yo-Yo <Jumbo> approx. 22 cm x 22 cm for 1 pc.
- 3-5 cm wide white or ecru wired edge ribbon
- Pearl Beads assorted sizes
- White Floral Wire
- White Floral Tape
- 1 pkg. Dried Baby' s Breath
- 2 Stems Small Silk Flowers
- 12-13 Small Dried Seed Pods

## instructions

### A Calla Lily Flower (Make 7)



1. Make one basic jumbo yo-yo.
2. Fold lower left side of the yo-yo to the center, then lower right side to the center. Snug up the crossover

and stitch closed using hidden stitches. **1**

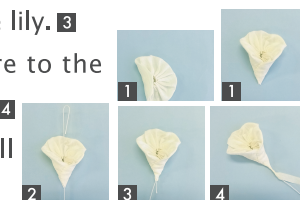
### 3. Attach Floral Wire Stem

- a. Insert stem wire through the center of the folded area and bend the wire down approx. 2" (5 cm) **2**

- b. Push the hook back down through the center, catching the fabric to secure the wire to the lily. **3**

- c. Twist the short end of the wire to the stem and wrap with floral tape. **4**

4. Add a pearl or one extra small yo-yo over the center hole.



# Floral Bouquet

## B Round Flower (Make 1)



1. Make one basic jumbo yo-yo.
2. Make approx. 7 extra small yo-yos.
3. Stitch the extra small yo-yos to the center of the jumbo yo-yo starting in the center and going around until you reach the desired look.
4. Attach Floral Wire Stem (see directions **E**).

## C Petal Flower with Jumbo Yo-Yo Center (Make 1)

1. Use wired edge ribbon to make petals. **5**
2. Sew petals into a circle. **6**
3. Make one extra large yo-yo and set it in the center of the petals.
4. Stitch in place adding a pearl in the center.
5. Attach Floral Wire Stem (see directions **E**).



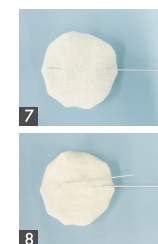
## D Petal/Leaf Shape

- After making the basic yo-yo, adjust the gathers downwards off center to form an oblong shape. Finish by inserting the needle and thread through the center of the hole and tie off.
- Petals are used to build flowers.
- Leaf shape is used as filler in the bouquet and has a stem attached. Make 2 or more for filling out the bouquet.

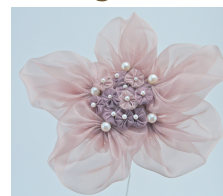


## E Attaching Floral Wire for Stem

1. Gently insert one end of the floral wire through the back of the base of the yo-yo for about 2". (5 cm) **7**
2. Bend the wire and gently push the short end back through the base of the flower, twist the wire around the stem, securing the flower to the wire. **8**
3. Wrap the twisted area with the Floral Tape.



## F Large Flower (Make 2)



1. Make one basic jumbo yo-yo.
2. Position 5 yo-yo petals around the base and stitch.
3. Fill in with the extra small yo-yos (approx. 15-16) starting at the base of the petals and working around toward the center, placing the final yo-yo in the center.
4. Stitch a pearl in the center of each extra small yo-yo as they are sewn to the base.
5. Attach Floral Wire Stem (see directions **E**).

## G Finishing

Bend the floral wire as the flowers are being placed in their vase to give that just-picked look. Fill in with Baby's Breath, Silk Flowers and Seed Pods...or any other fillers of your choice.

