

Animal face pins



Designed by Sachiyo Ishii

<Abbreviations>

RS: right side

WS: wrong side

St st: stocking stitch

St(s): stitch(es)

K: knit

P: purl

Kfb: k one through the front then through the back (same stitch)

K2tog: knit two together

P2tog: purl two together

Skpo: slip 1 stitch, k1, pass slipped stitch over

Tools

- 3.0 mm Bamboo Knitting Needles **Takumi**® Single Pointed (23 cm) (Art No. 3705)
- Gold Eye Chenille Needle(No. 18) (Art No. 234/18)
- All-purpose sewing needle
- Patchwork Scissors Mini (Art No. 493/CW)

Materials

This project requires very small amounts of many colours in DK.
Feel free to improvise to use your stash.

- [A] A small amount of soft brown DK
- [B] A small amount of soft pink DK
- [C] A small amount of white DK
- [D] A small amount of grey DK
- [E] A small amount of peach DK
- [F] A small amount of beige DK
- [G] A small amount of dark brown DK
- [H] A small amount of black DK
- [I] A small amount of 4-ply dark brown
- 4mm black beads x 6
- Black cotton thread
- Stuffing
- 5 safety pins

Practical tips

- Leave a long end at the beginning and end of each piece for sewing
- Sew seam with RS facing, using mattress stitch.
- Work a French knot with black yarn for each eye if you do not wish to use beads.

Animal face pins

Basic face

Head

With face colour of your choice, cast on 10 sts.

Row 1 (WS): Purl.

Row 2: (Kfb) in each st to end. 20 sts

Row 3: Purl.

Row 4: (K1, kfb) to end. 30 sts

Rows 5-13: Starting with a p row, work 9 rows in St st.

Row 14: (K1, k2tog) to end. 20 sts

Row 15: Purl.

Row 16: (K2tog) to end. 10 sts

Break yarn, thread through sts, pull tightly and fasten off.

Muzzle

With muzzle colour of your choice, cast on 16 sts

Row 1 (RS): Purl.

Row 2: (K2tog) to end. 8 sts

Break yarn, thread through sts, pull tightly and fasten off.

To make up

With fastened-off yarn end, sew seam of head and stuff.

Work a gathering thread along cast-on edge of head and pull tightly.

Squash down the stuffed head and with a threaded needle, pierce head from cast-on end (back of head) and take needle out from fastened-off end (front of face) and repeat. Pull thread to flatten the piece.

Stitch together side edges of muzzle with RS facing.

Without stuffing, attach muzzle to face.



Cat

Ears: make two

Outer ears: make two

With yarn D, cast on 6 sts.

Row 1 (WS): Purl.

Row 2: Skpo, k to last 2 sts, k2tog. 4 sts.

Row 3: Purl.

Row 4: Skpo, k2tog. 2 sts.

Row 5: P2tog and fasten off.

Inner ears: make two

With yarn C, cast on 5 sts.

Row 1 (WS): Purl.

Row 2: Skpo, k1, k2tog - 3 sts.

Row 3: Purl.

Row 4: Slip 1 stitch, k2tog, pass the first st over the second and fasten off.

To make up

Make up the face, following the basic assembly instructions, using yarn D for the head and yarn C for the muzzle.

Sew outer and inner ears together at side edges.

Attach ears to head. With yarn I, embroider eyes, nose and whiskers.

Animal face pins



Rabbit

Ears: make two

With yarn B, cast on 12 sts and work 5 rows in St st, starting with a p (WS) row.

Row 6: (K2, k2tog) to end. 9 sts

Rows 7-9: Starting with a p row, work 3 rows in St st.

Row 10: (K2tog) four times, k1. 5 sts

Break yarn, thread through sts, pull tightly and fasten off.

To make up

Make up the face, following the basic assembly instructions, using yarn B for the head and yarn C for the muzzle.

Seam ear with fastened-off yarn end. With seam in centre and facing forwards, attach ears to head. Attach eye beads.

With yarn I, embroider nose and mouth.



Pig

Ears: make two

With yarn E, cast on 5 sts.

Rows 1-2: Starting with a p (WS) row, work 2 rows in St st.

Row 3: P2tog, p1, p2tog. 3 sts

Row 4: Knit.

Row 5: P2tog, p1. Pass the first st over the second and fasten off.

Snout

With yarn E, cast on 16 sts and purl 2 rows.

Row 3: (P2tog) to end. 8 sts

Break yarn, thread through sts, pull tightly and fasten off.

To make up

Make up the face, following the basic assembly instructions for the head only, using yarn E.

Stitch together side edges of snout with RS facing. Attach ears and snout to head.

Attach eye beads. With yarn I, embroider nostrils.

Animal face pins

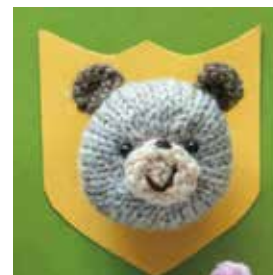


Panda

Ears: make two
Work as for Bear, using yarn H.

Eyes: make two
With two strands taken from yarn H held together, cast on 8 sts,
purl 1 row.
Break yarn, thread through sts, pull tightly and fasten off.

To make up
Make up the face, following the basic assembly instructions,
using yarn C for the head and muzzle. Attach ears. Attach eye beads.
Take two strands from yarn H together, embroider the nose.



Bear

Ears: make two
With yarn G, cast on 10 sts and purl 1 row.
Break yarn, thread through sts, pull tightly and fasten off.
Stitch side edges together to form a semi-circle.

To make up
Make up the face, following the basic assembly instructions,
using yarn A for the head and yarn F for the muzzle.
Attach ears. Attach eye beads. With yarn I, embroider nose.

Designer' s Favorite

Bamboo Knitting Needles Takumi® Single Pointed

These are perfect when you work a small toy project.
They prevent from yarn to slip and make the finish clean
and neat.
Very nice to the touch and delightful to work with.

<https://www.clover-mfg.com/product/4/130>

