

Patterned Knit Cap No. 1

Design source

• Clover

Finished size

• Approx. 45 cm head circumference
 *Stretchable, 23 cm tall, laid flat.

Materials

• Bulky weight yarn (35 m / 70 g): 120 g

Needles

• Bamboo Circular Knitting Needles
 (40 cm/8.0 mm)(Art No.3876)

Extras

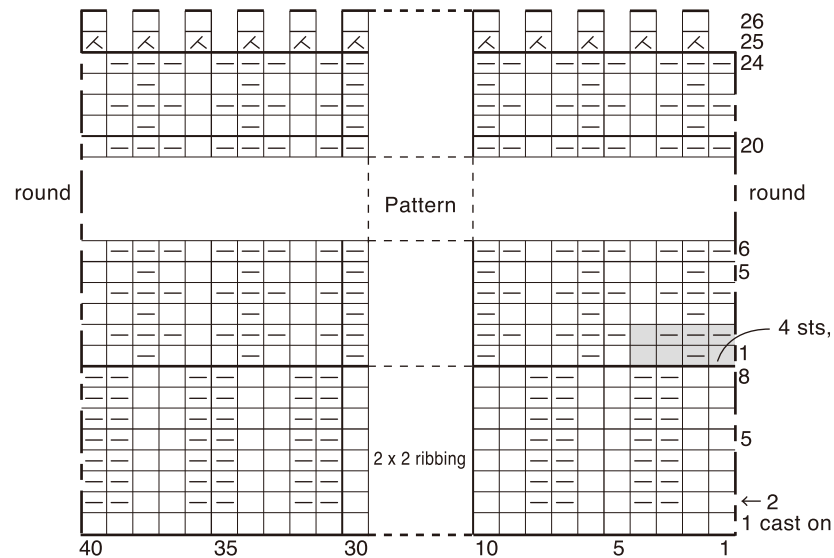
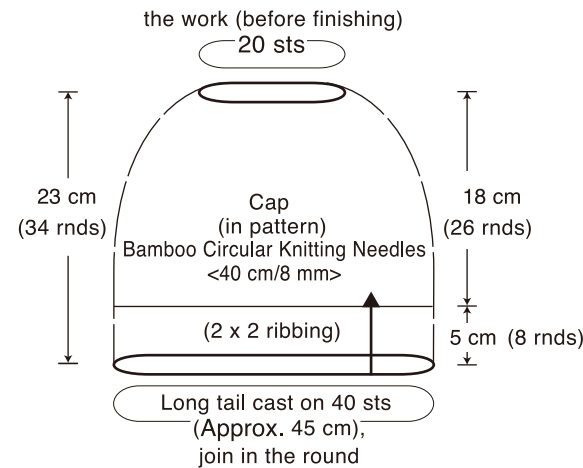
• One stitch marker

Gauge

• 9 sts x 15 rows = 10 cm x 10 cm in main pattern

Stitches

• k2, p2 rib: *k2, p2; rep from * to end
 Pattern: rnd 1 *k1, p1, k2; rep from * to end
 rnd 2 *p3, k1; rep from * to end



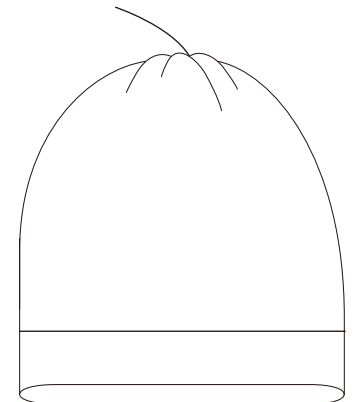
Stitch key

Knitting

□ = k (knit) □ = p (purl) □ = k2tog (knit 2 stitches together)

Completion

Draw yarn end through rem sts and fasten tight.



Instructions

Long tail cast on 40 sts, join in the round. Work in k2, p2 rib for 7 rnds. Work in pattern for 24 rnds.
 Next rnd: k2tog around, 20 sts remaining.
 Next rnd: k around.
 Cut yarn leaving a long end. Draw the end through rem sts and fasten tight.