

# Long Scarf

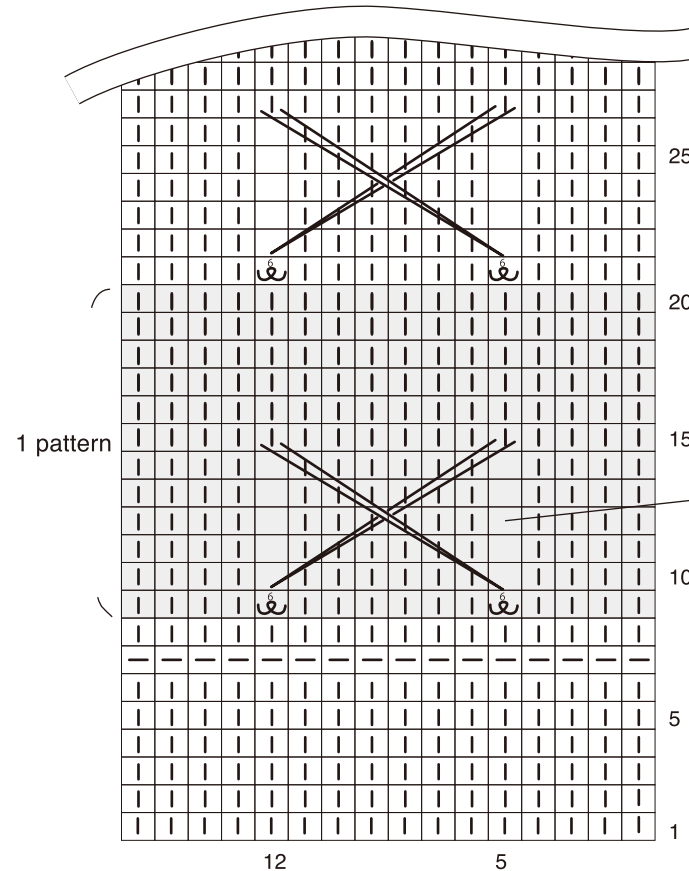


## Instructions

1. Long tail cast on 16 sts.  
rows 1-6: St st  
rows 7-8: p

\* Selvages: Work in sl st

\* The diagram appears to be showing how the scarf will look when completed which is different to showing what stitches you make to complete it.



2. row 9: k4, k1 winding yarn around needle 6 times, k6, k1 winding yarn around needle 6 times, k4  
row 10 (WS): p4, drop 5th st (all loops), p6, drop 12th st (all loops), p4  
rows 11-14: St st (skipping dropped sts which results in 14 sts per row)

3. row 15 (RS): k4, k1 picking up extra dropped loop of 12th st, k6, k1 picking up extra dropped loop of 5th st, k4

4. rows 16 (WS): p  
rows 17-20: St st

5. Repeat rows 9-20 19 more times.  
Next 2 rows: k  
Next 6 rows: St st  
BO and weave in ends.

These parts are not knitted, just drop the 5th and 12th stitch at row 10 and pick them up again at row 15.

### Finished size

• 15 cm width, 190 cm length

### Gauge

• 12 sts x 14 rows = 10 cm x 10 cm in pattern

### Needles

• Bamboo Knitting Needles TAKUMI Single Pointed (Art No.3746)(35 cm / 8.0 mm)

### Extras

• Darning needle

### Material

• Bulky weight yarn (50 m / 50 g): 150 g

### Stitch key Knitting

k (knit)	winding yarn round needle 6 times
p (purl)	sl (slip st)