

Alphabet Mat



Instructions

1. Make 132 foundation chains

First Row: dc1 in the 8th chain from hook, [ch2,sk2,dc1] repeat [] to the end. Finish row with dc1

2nd Row to 202: Follow the diagram

2. Edging Row: make sc2 in every chain space.

* Make sc5 in corner chain spaces. End of the row sl st in first sc. Cut the yarn .

Tools

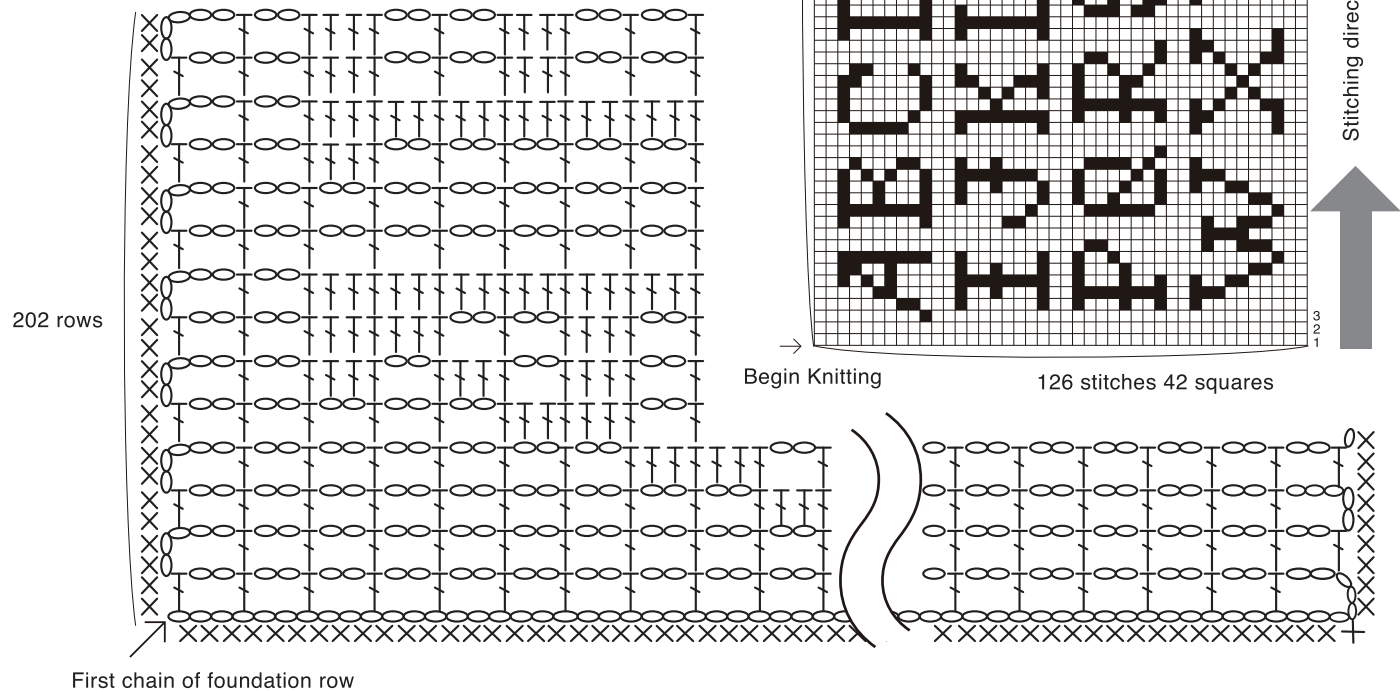
- Soft Touch Steel Crochet Hook (0.90 mm) (Art No.1024) / Amour Steel Crochet Hook (0.90 mm) (Art No.1224)
- Darning Needle

Materials

- Crochet thread No.40: 445 m/50 g...21 g

Finished Size

- Approx. 28.5 cm x 20 cm



Alphabet Mat

