



US8 / UK10

US6 / UK8

US4 / UK6

## Pattern Paper (A)-1 for Dress and Tunic Print each page at 100% on A4 paper.



This pattern paper (A) is formed by joining 4 pages (1-4) to create one single pattern piece. Connect by matching the marks ★ together.

\*Seam allowance is not included.

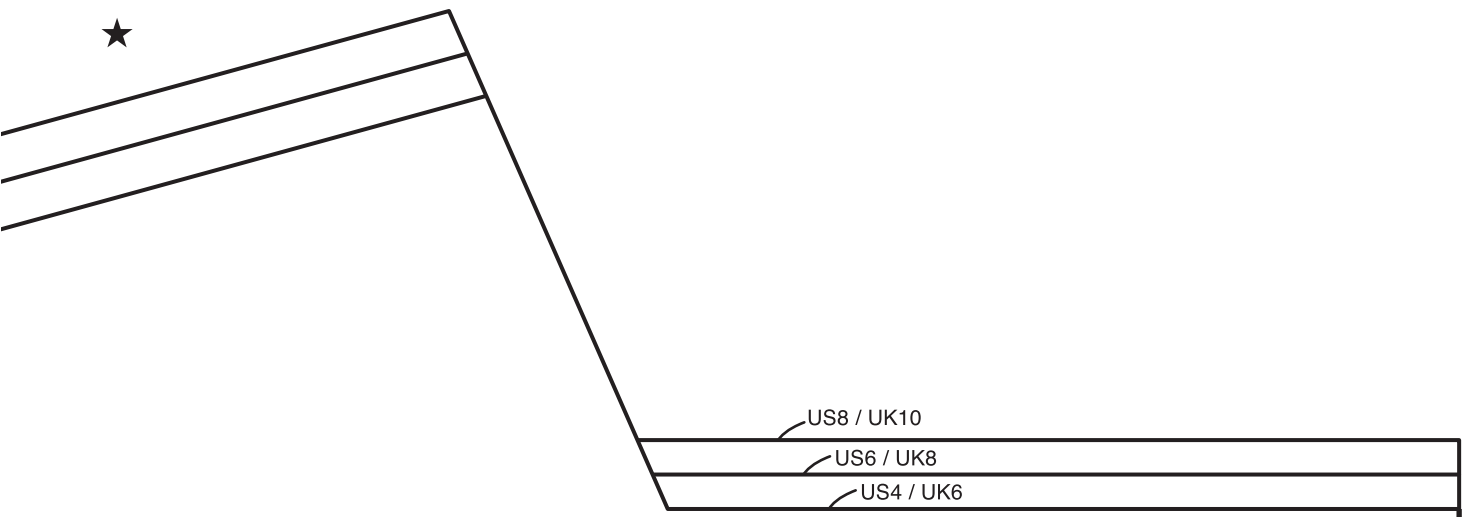
Consult the cutting diagram in the instructions to see where to add the seam allowance.

**Dress sleeve gathers stop**



**Tunic string placement**





## Pattern Paper (A)-2 for Dress and Tunic

Print each page at 100% on A4 paper.

**!** This pattern paper (A) is formed by joining 4 pages (1-4) to create one single pattern piece. Connect by matching the marks ★ together.

\*Seam allowance is not included.  
Consult the cutting diagram in the instructions to see where to add the seam allowance.

**Front Yoke (Tunic)**  
**Front Body (Dress)**

**Center Front**  
**(Cut on the fold)**


**Cut here for Tunic**





## Pattern Paper (A)-3 for Dress and Tunic

**Print each page at 100% on A4 paper.**

 This pattern paper (A) is formed by joining 4 pages (1-4) to create one single pattern piece. Connect by matching the marks ★ together.

\*Seam allowance is not included.  
Consult the cutting diagram in the instructions to see where to add the seam allowance.

US8 / UK10

US4 / UK6

US6 / UK8

**Cut here for Dress**





## Pattern Paper (A)-4 for Dress and Tunic

**Print each page at 100% on A4 paper.**



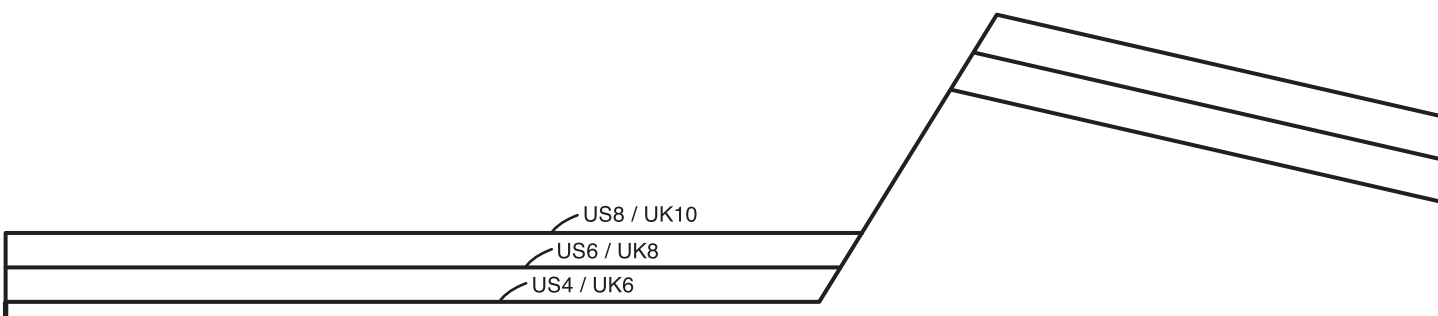
This pattern paper (A) is formed by joining 4 pages (1-4) to create one single pattern piece.

Connect by matching the marks ★ together.

\*Seam allowance is not included.

Consult the cutting diagram in the instructions to see where to add the seam allowance.





**Pattern Paper (B)-1 for Dress and Tunic**  
**Print each page at 100% on A4 paper.**

**!** This pattern paper (B) is formed by joining 4 pages (1-4) to create one single pattern piece. Connect by matching the marks ♥ together.

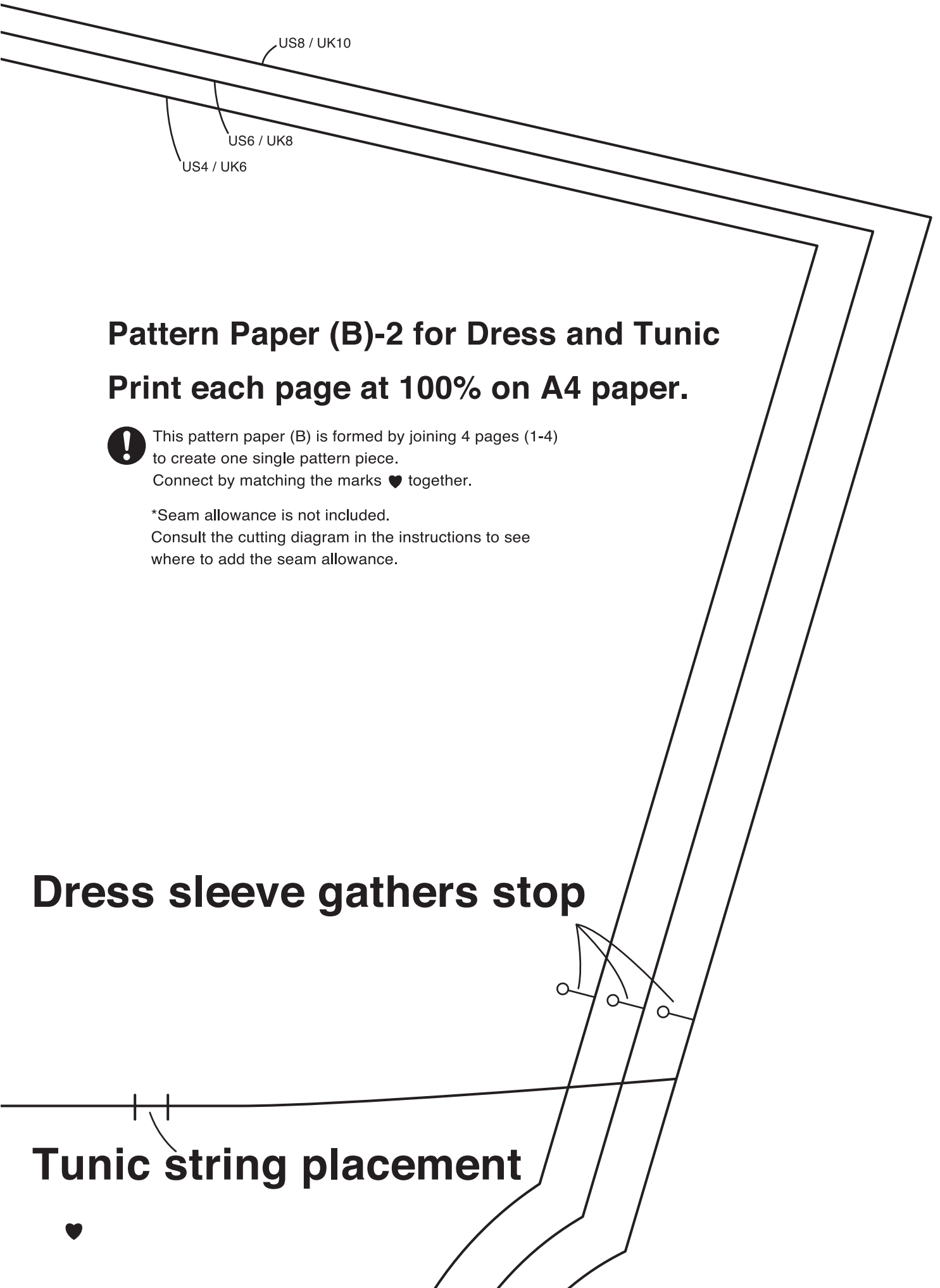
\*Seam allowance is not included. Consult the cutting diagram in the instructions to see where to add the seam allowance.

**Rear Yoke (Tunic)**  
**Back Body (Dress)**

**Center Back**  
**(Cut on the fold)**

**Cut here for Tunic**





## Pattern Paper (B)-2 for Dress and Tunic

**Print each page at 100% on A4 paper.**



This pattern paper (B) is formed by joining 4 pages (1-4) to create one single pattern piece.

Connect by matching the marks ♥ together.

\*Seam allowance is not included.

Consult the cutting diagram in the instructions to see where to add the seam allowance.

**Dress sleeve gathers stop**



**Tunic string placement**





# Pattern Paper (B)-3 for Dress and Tunic

## Print each page at 100% on A4 paper.



This pattern paper (B) is formed by joining 4 pages (1-4) to create one single pattern piece.

Connect by matching the marks ♥ together.

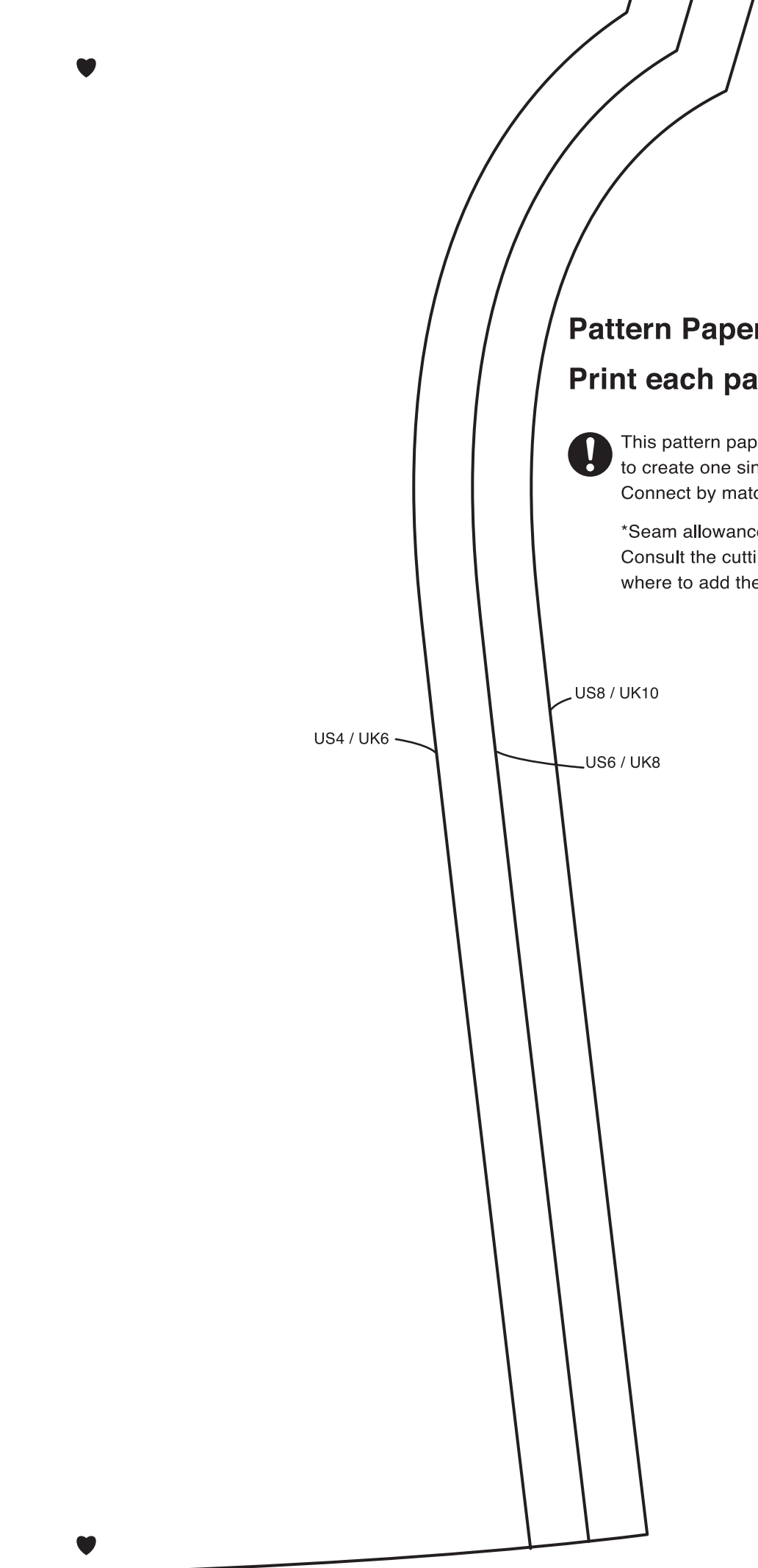
\*Seam allowance is not included.

Consult the cutting diagram in the instructions to see where to add the seam allowance.



### Cut here for Dress





## Pattern Paper (B)-4 for Dress and Tunic

### Print each page at 100% on A4 paper.



This pattern paper (B) is formed by joining 4 pages (1-4) to create one single pattern piece.

Connect by matching the marks ♥ together.

\*Seam allowance is not included.

Consult the cutting diagram in the instructions to see where to add the seam allowance.

US4 / UK6

US8 / UK10

US6 / UK8





# Pattern Paper (C)-1 for Dress and Tunic

Print each page at 100% on A4 paper.

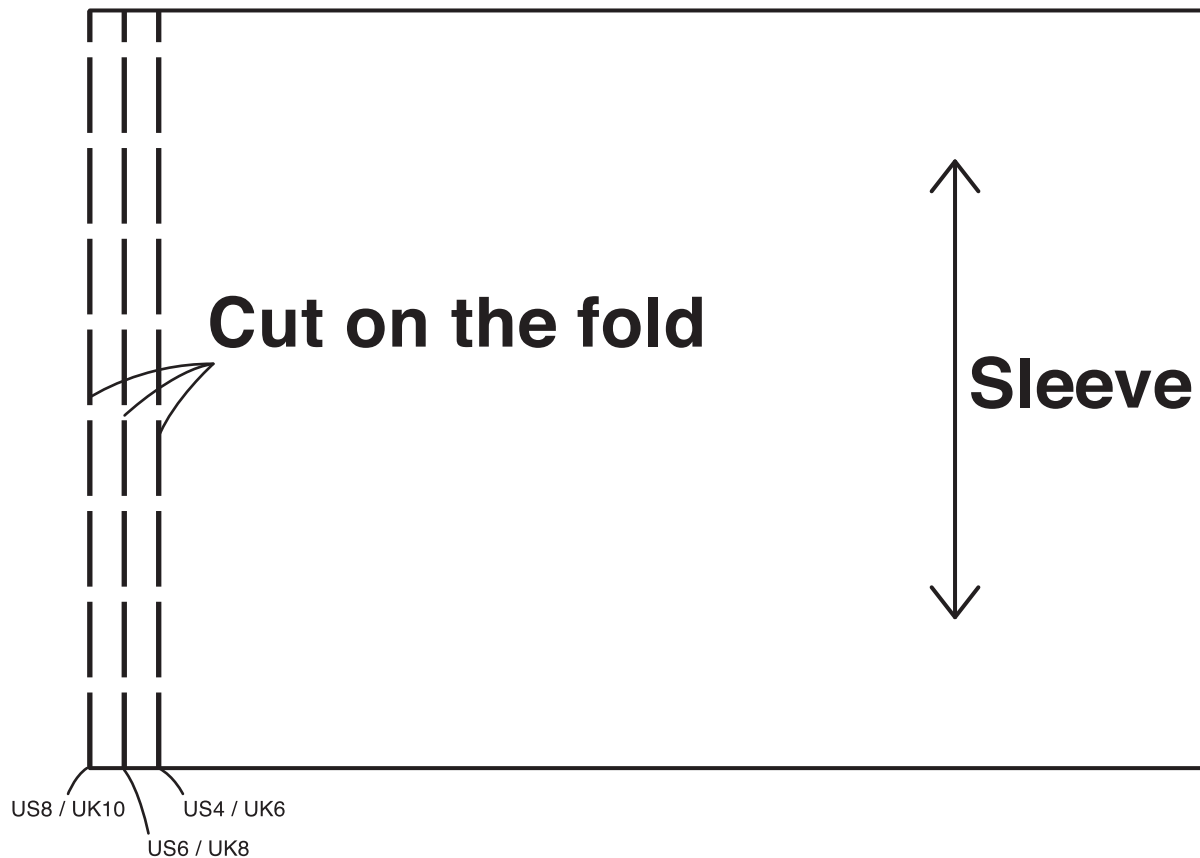
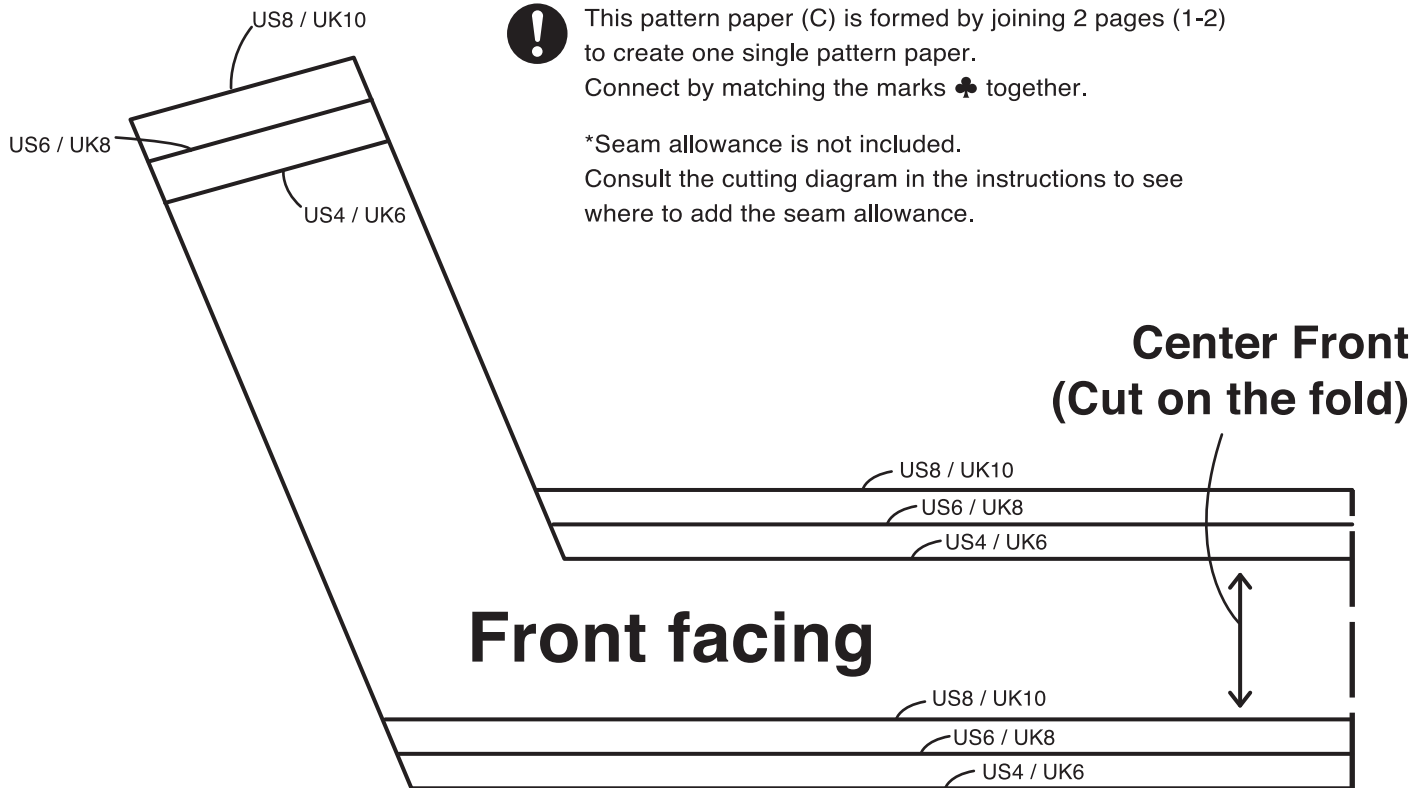


This pattern paper (C) is formed by joining 2 pages (1-2) to create one single pattern paper.

Connect by matching the marks ♣ together.

\*Seam allowance is not included.

Consult the cutting diagram in the instructions to see where to add the seam allowance.



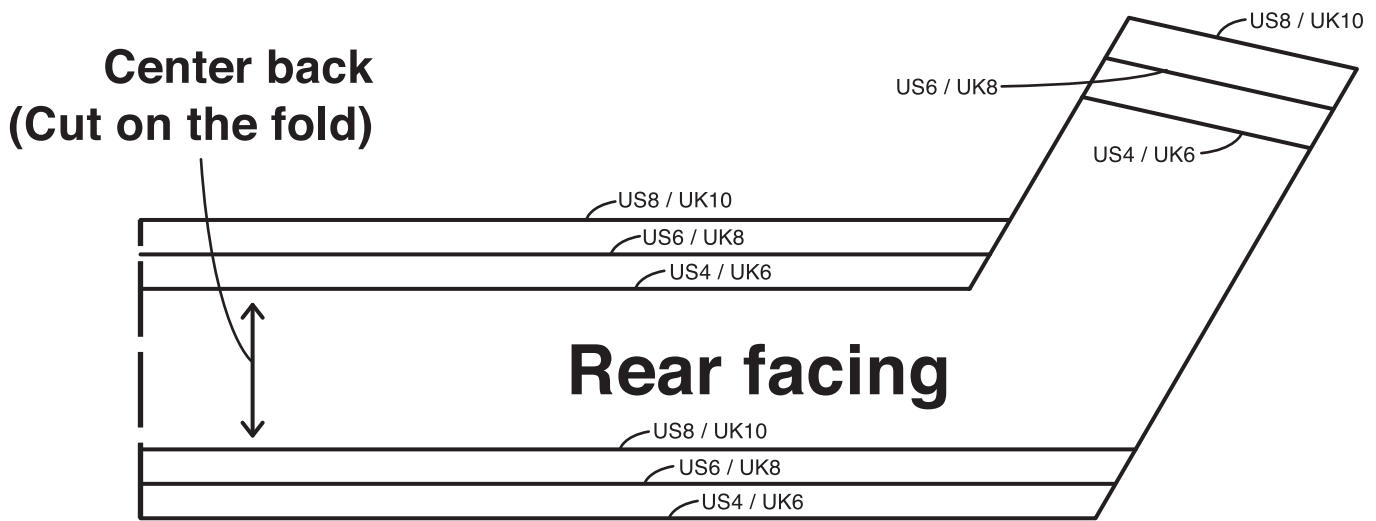


# Pattern Paper (C)-2 for Dress and Tunic

Print each page at 100% on A4 paper.

**!** This pattern paper (C) is formed by joining 2 pages (1-2) to create one single pattern paper.  
Connect by matching the marks ♣ together.

\*Seam allowance is not included.  
Consult the cutting diagram in the instructions to see where to add the seam allowance.



**Gather**

**Gathers stop**

US4 / UK6  
US8 / UK10  
US6 / UK8

