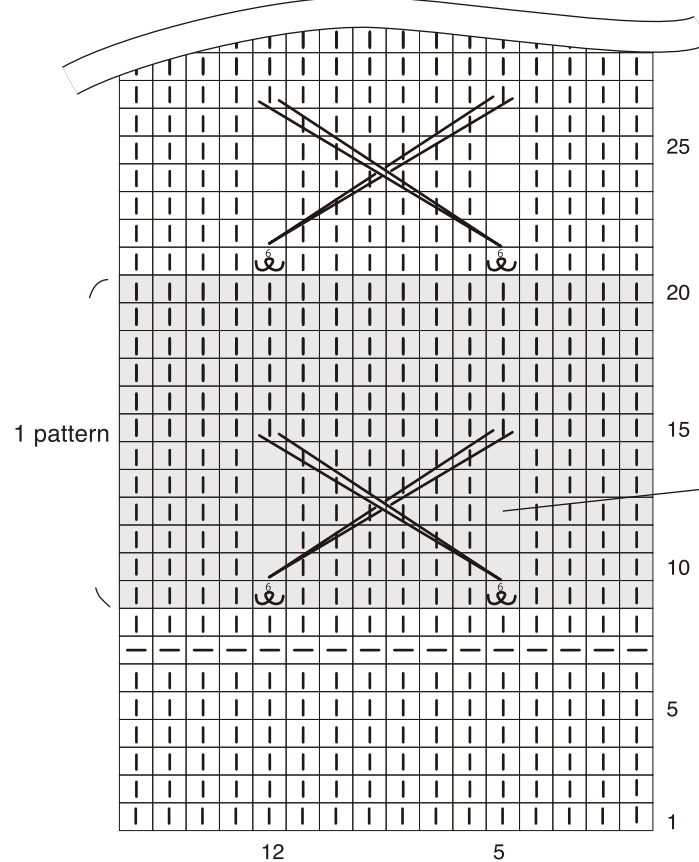





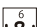
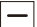

# Long Scarf

\* The diagram appears to be showing how the scarf will look when completed which is different to showing what stitches you make to complete it.



These parts are not knitted, just drop the 5th and 12th stitch at row 10 and pick them up again at row 15.

## Stitch key Knitting

 k (knit)	 winding yarn round needle 6 times
 p (purl)	 sl (slip st)