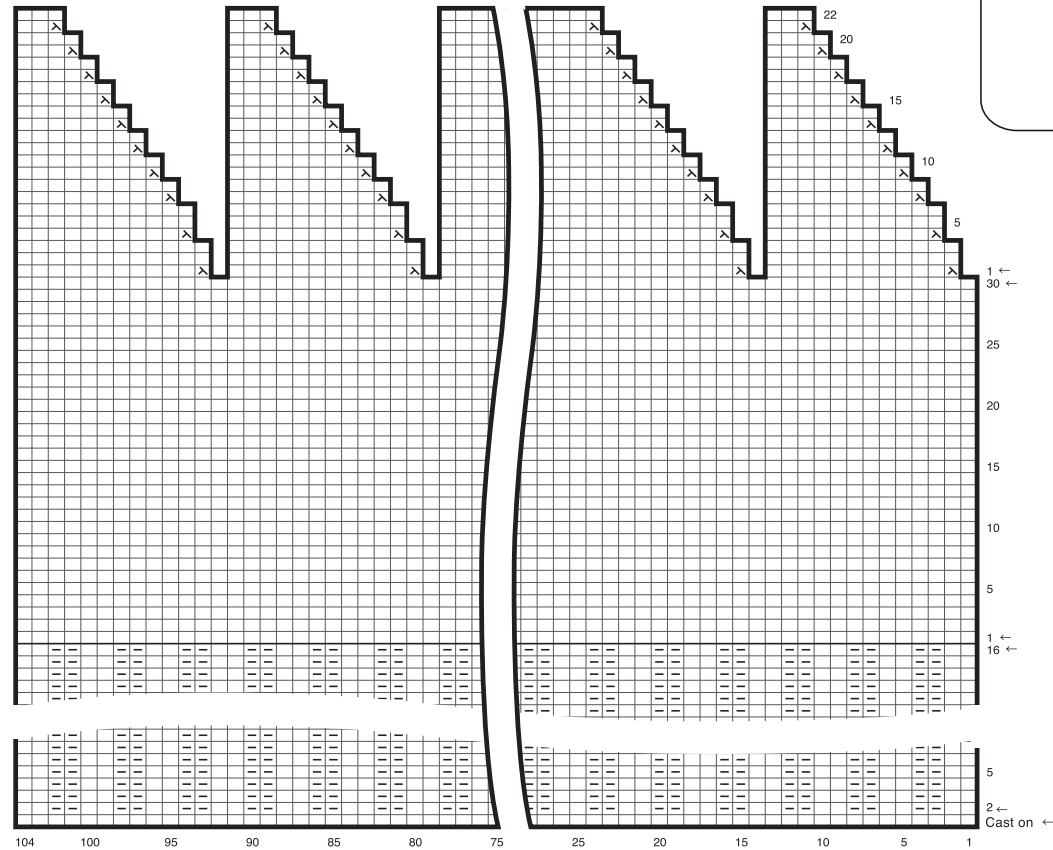




Pompom Cap

Instructions



Stitch key

Knitting

□ = □ = k(knit)

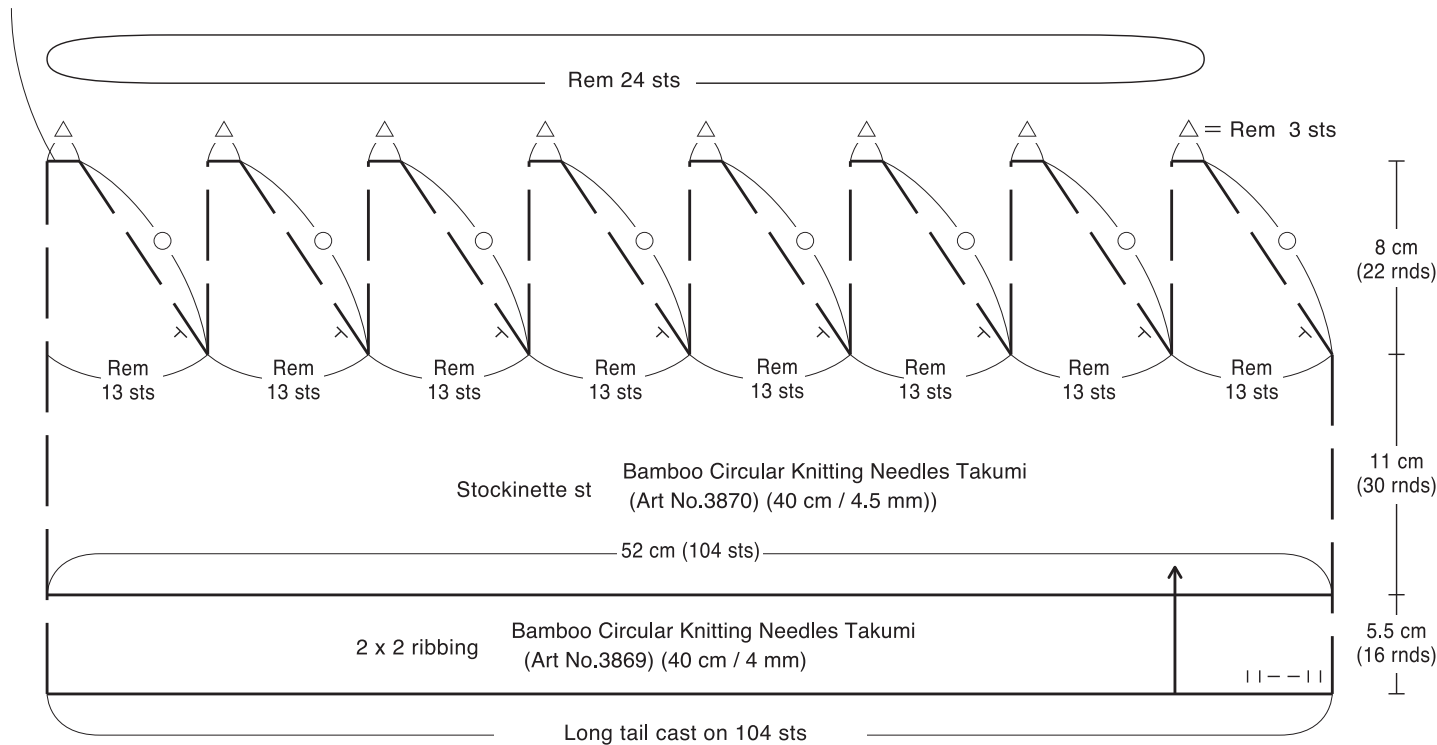
▬ = p (purl)

⋈ = ssk (slip, knit, pass slipped stitch over)

Draw the yarn end through remaining stitches on the last row and fasten tight.

Keep number of stitches
as previous rnd

$\triangle = 2 - 1 - 7$
 $\circ = 3 - 1 - 2$
 $\triangleright = 1 - 1 - 1$ } Decrease



With Pom-Pom Maker (Extra Large)
Art No.3128 (115 mm),
make pom-pom winding
1ply yarn approximately 200 times.
Attach it to top of the cap.

