

Gathered Smock Dress



Materials

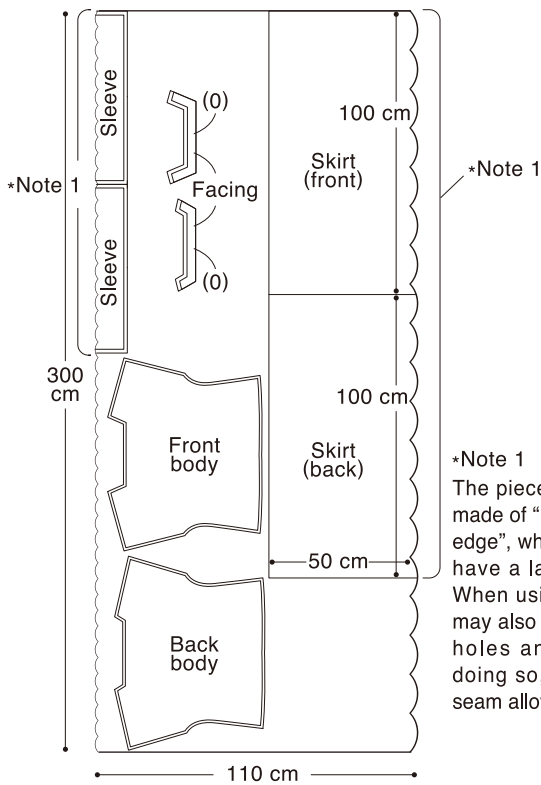
- Cloth: 110 cm width x 300 cm
- Fusible interfacing: 80 cm x 15 cm
- Fuse'n Gather Fusible Gathering Tape

Required Items

Sewing machine, Sewing thread, Sewing needle, Thread, Erasable Marker, Scissors, Iron, Ironing Board

*Seam allowances are included in measurements for skirt pieces. Unless specified in brackets (), seam allowances are 1 cm wide.

Cutting Diagram



Instructions

*If you don't have a serger (overlocker), you can use a zigzag stitch to finish the raw edges.

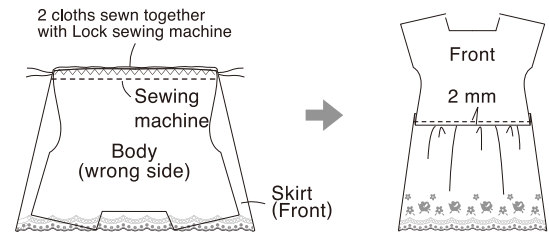
1. Fuse interfacing onto wrong side of the facing pieces with an iron before overlocking the edges.



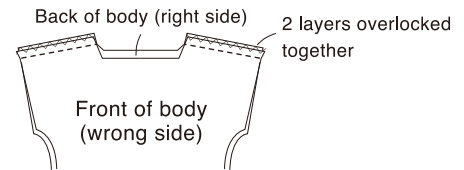
2. Iron the Fusible Gathering tape to the wrong side of the sleeves and both skirt pieces.



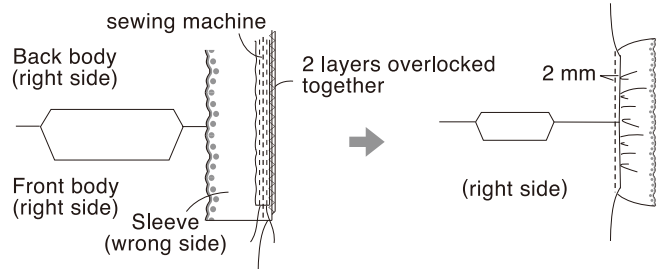
3. Gather the skirt pieces so that they are the same width as the body pieces. Place skirt to body, right sides together and sew on the sewing machine. Overlock the two seam allowances together and topstitch from the right side, as in the diagram. Repeat these steps for front and back of dress.



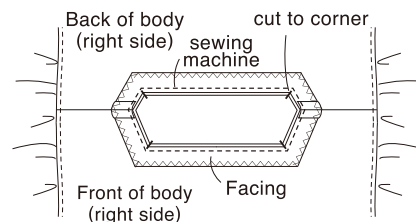
4. Place the front and back of the body right sides together and stitch along the shoulders. Overlock the two seam allowances together.



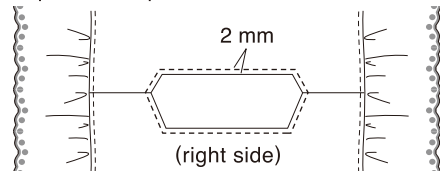
5. Gather the sleeves so they fit to the main body and stitch, right sides together. Overlock the 2 seam allowances together and topstitch from the right side as in the diagram.



6. Sew two facing pieces together along the shoulders, right sides together and press seams open. Match the facing with the body, right sides together and sew around the neckline. Cut the seam allowances in the corners to the line of stitching, as indicated in the diagram.



7. Bring the facing through to the wrong side of the dress, press and topstitch it in place around the neckline.



8. Sew down the sides from the sleeve to the hem and overlock the 2 seam allowances together.





US8 / UK10

US6 / UK8

US4 / UK6

Pattern Paper (A)-1 for Dress and Tunic Print each page at 100% on A4 paper.

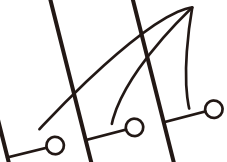


This pattern paper (A) is formed by joining 4 pages (1-4) to create one single pattern piece. Connect by matching the marks ★ together.

*Seam allowance is not included.

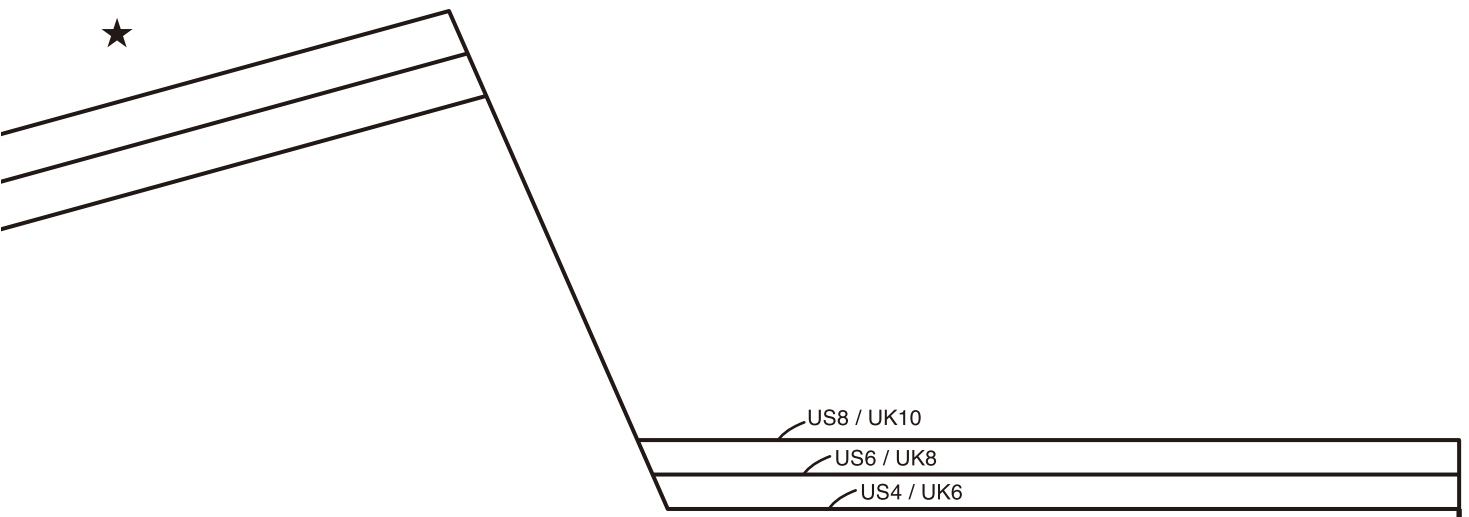
Consult the cutting diagram in the instructions to see where to add the seam allowance.

Dress sleeve gathers stop



Tunic string placement





Pattern Paper (A)-2 for Dress and Tunic
Print each page at 100% on A4 paper.

! This pattern paper (A) is formed by joining 4 pages (1-4) to create one single pattern piece.
 Connect by matching the marks ★ together.

*Seam allowance is not included.
 Consult the cutting diagram in the instructions to see where to add the seam allowance.

Front Yoke (Tunic)
Front Body (Dress)

Center Front
(Cut on the fold)


Cut here for Tunic





Pattern Paper (A)-3 for Dress and Tunic

Print each page at 100% on A4 paper.

 This pattern paper (A) is formed by joining 4 pages (1-4) to create one single pattern piece. Connect by matching the marks ★ together.

*Seam allowance is not included.
Consult the cutting diagram in the instructions to see where to add the seam allowance.

US8 / UK10

US4 / UK6

US6 / UK8

Cut here for Dress





Pattern Paper (A)-4 for Dress and Tunic

Print each page at 100% on A4 paper.



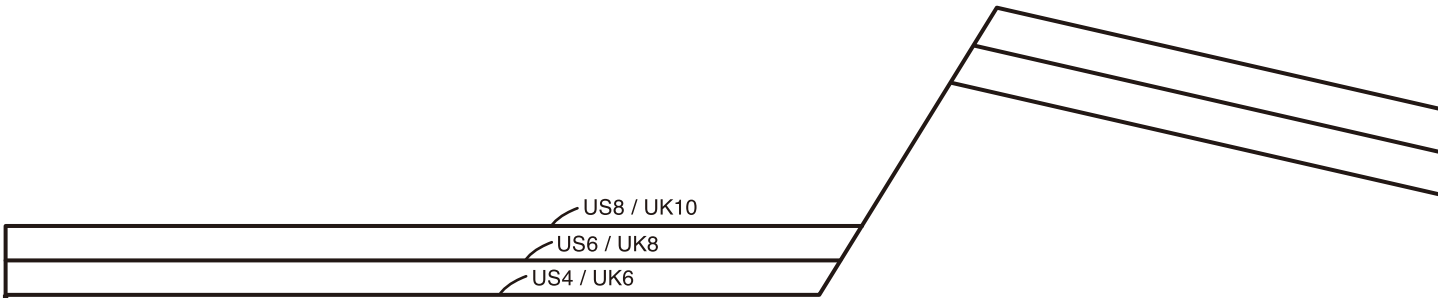
This pattern paper (A) is formed by joining 4 pages (1-4) to create one single pattern piece.

Connect by matching the marks ★ together.

*Seam allowance is not included.

Consult the cutting diagram in the instructions to see where to add the seam allowance.





Pattern Paper (B)-1 for Dress and Tunic
Print each page at 100% on A4 paper.

! This pattern paper (B) is formed by joining 4 pages (1-4) to create one single pattern piece. Connect by matching the marks ♥ together.

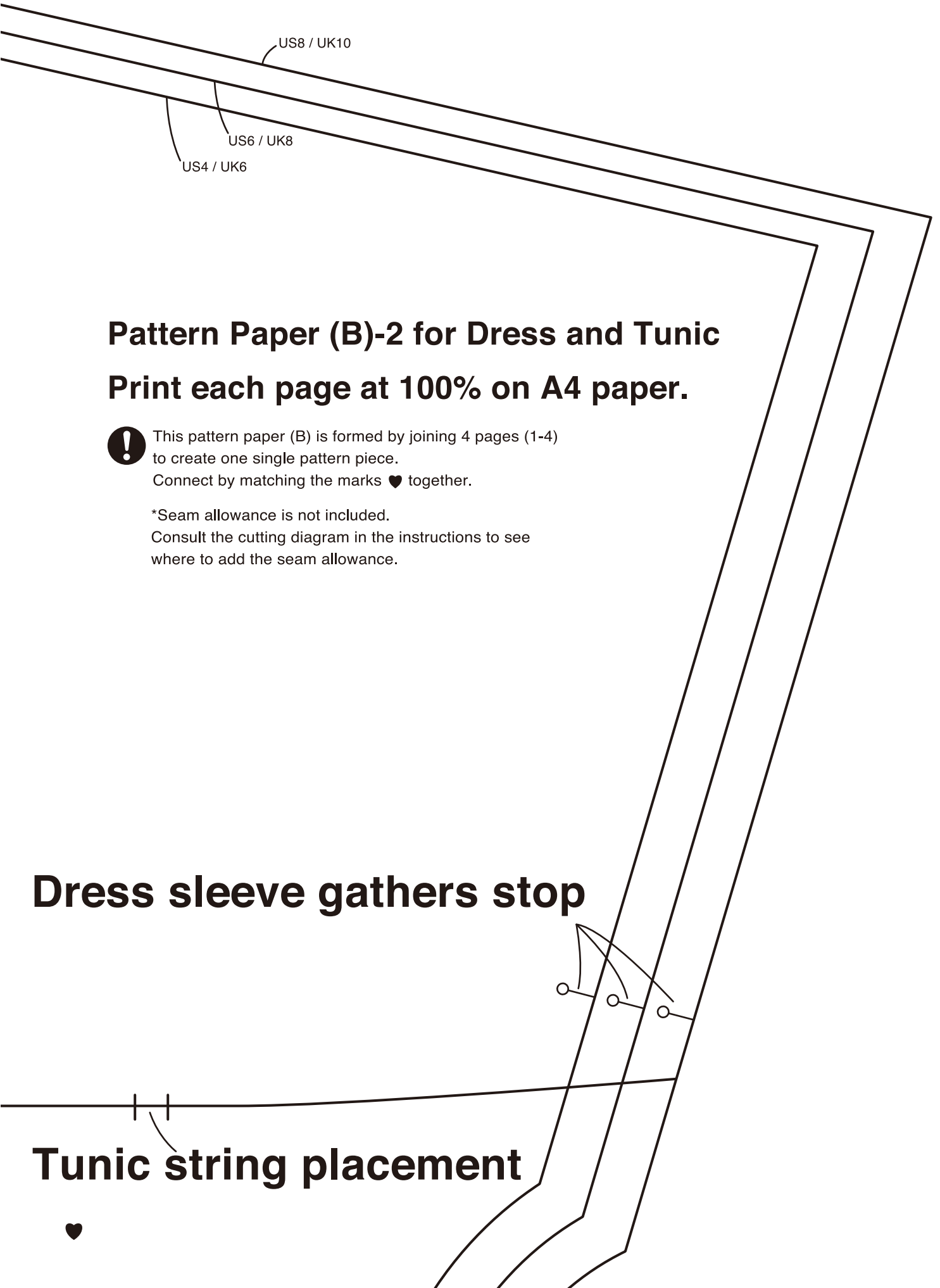
*Seam allowance is not included. Consult the cutting diagram in the instructions to see where to add the seam allowance.

Rear Yoke (Tunic)
Back Body (Dress)

Center Back
(Cut on the fold)

Cut here for Tunic





Pattern Paper (B)-2 for Dress and Tunic

Print each page at 100% on A4 paper.



This pattern paper (B) is formed by joining 4 pages (1-4) to create one single pattern piece.

Connect by matching the marks ♥ together.

*Seam allowance is not included.

Consult the cutting diagram in the instructions to see where to add the seam allowance.

Dress sleeve gathers stop



Tunic string placement





Pattern Paper (B)-3 for Dress and Tunic

Print each page at 100% on A4 paper.



This pattern paper (B) is formed by joining 4 pages (1-4) to create one single pattern piece.

Connect by matching the marks ♥ together.

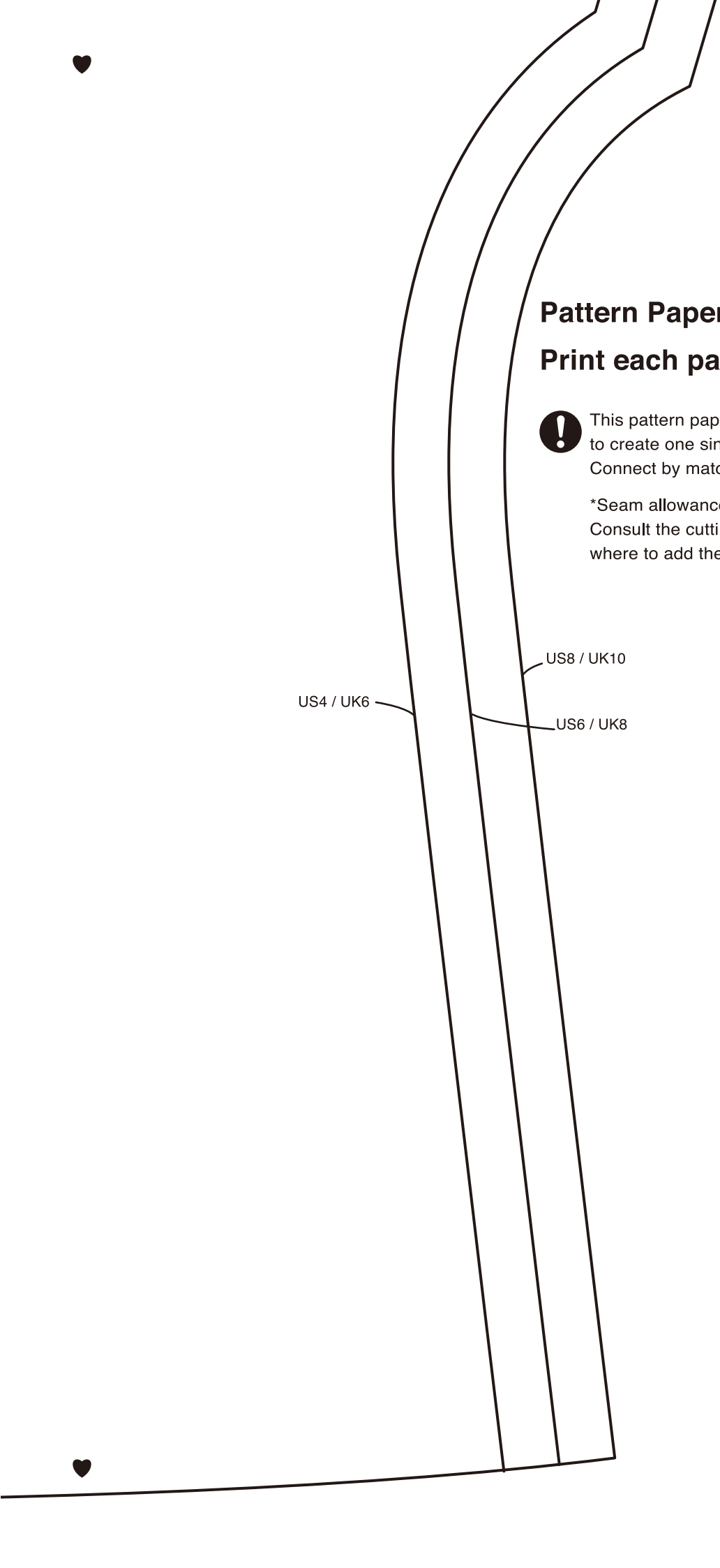
*Seam allowance is not included.

Consult the cutting diagram in the instructions to see where to add the seam allowance.



Cut here for Dress





Pattern Paper (B)-4 for Dress and Tunic

Print each page at 100% on A4 paper.



This pattern paper (B) is formed by joining 4 pages (1-4) to create one single pattern piece.

Connect by matching the marks ♥ together.

*Seam allowance is not included.

Consult the cutting diagram in the instructions to see where to add the seam allowance.

US4 / UK6

US8 / UK10

US6 / UK8



Pattern Paper (C)-1 for Dress and Tunic

Print each page at 100% on A4 paper.

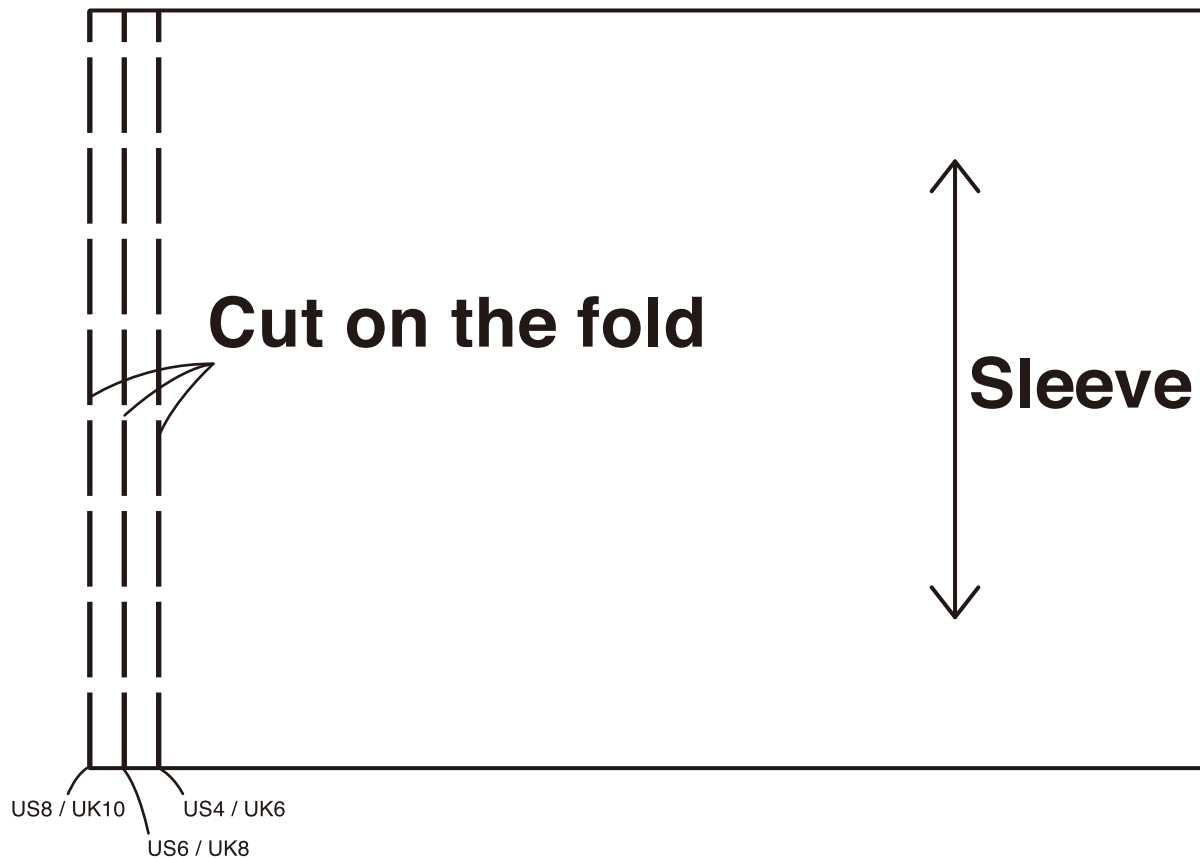
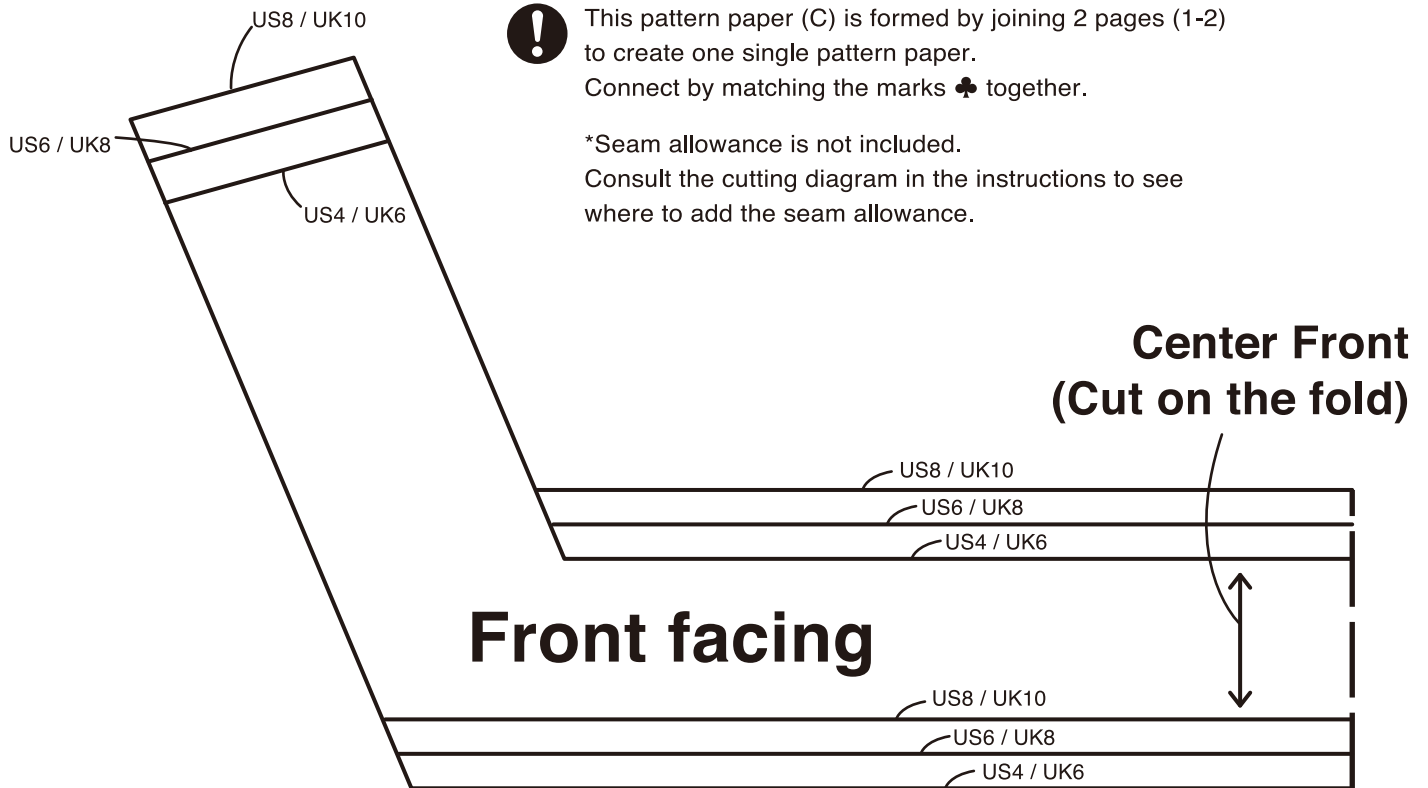


This pattern paper (C) is formed by joining 2 pages (1-2) to create one single pattern paper.

Connect by matching the marks ♣ together.

*Seam allowance is not included.

Consult the cutting diagram in the instructions to see where to add the seam allowance.



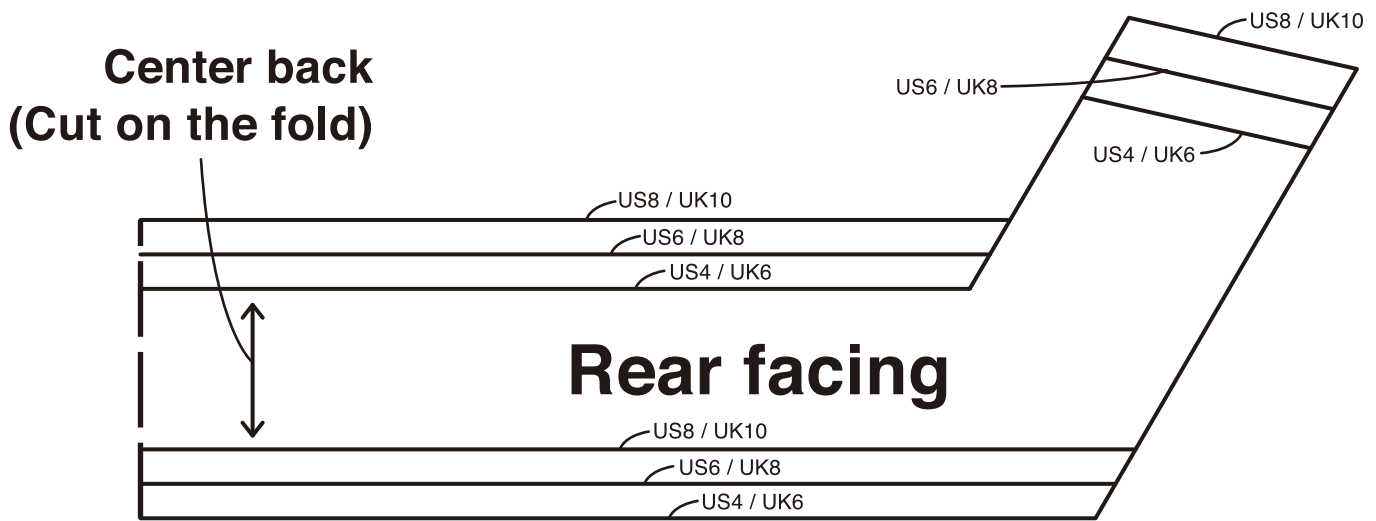


Pattern Paper (C)-2 for Dress and Tunic

Print each page at 100% on A4 paper.

! This pattern paper (C) is formed by joining 2 pages (1-2) to create one single pattern paper.
Connect by matching the marks ♣ together.

*Seam allowance is not included.
Consult the cutting diagram in the instructions to see where to add the seam allowance.



Gather

Gathers stop

US4 / UK6
US8 / UK10
US6 / UK8

