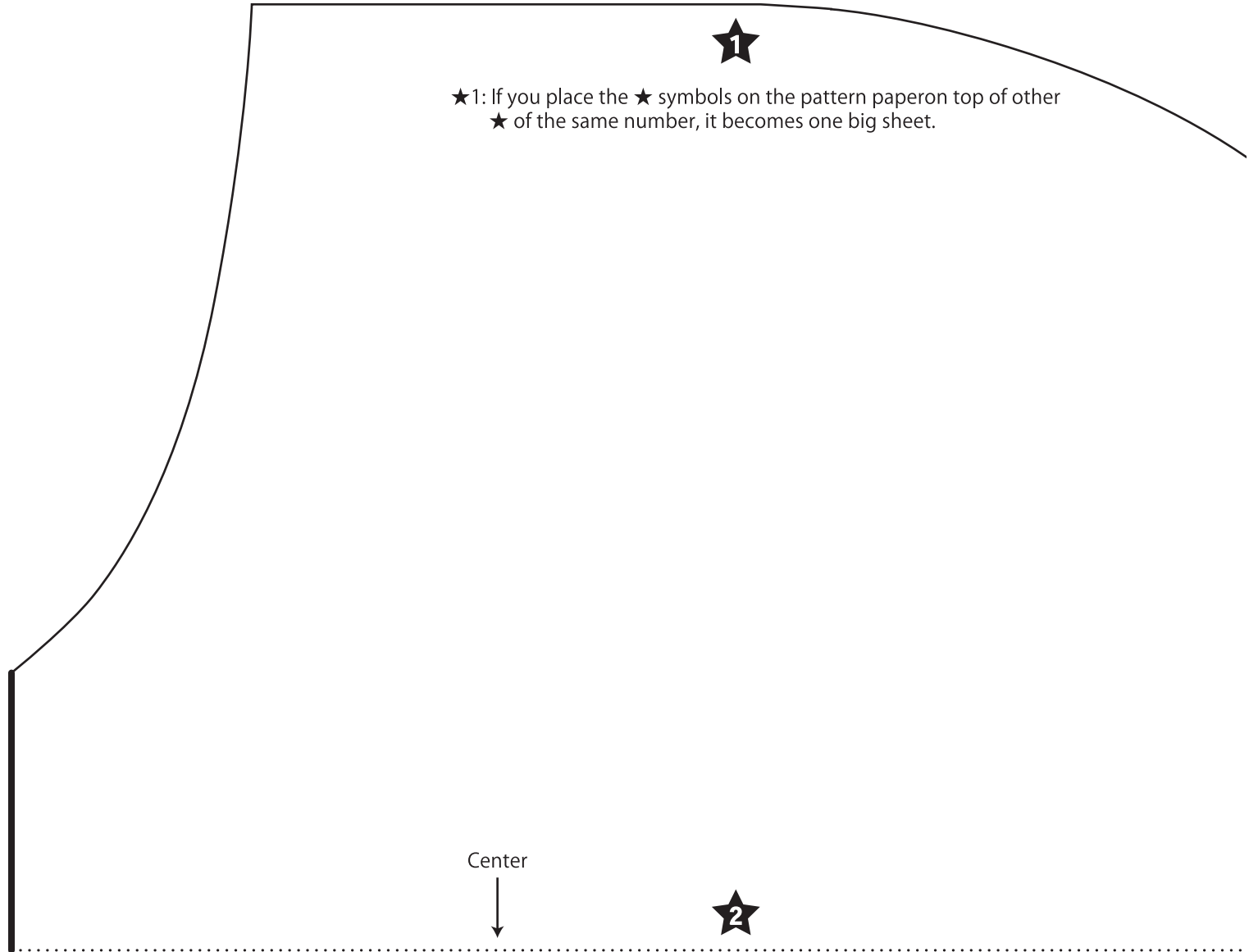
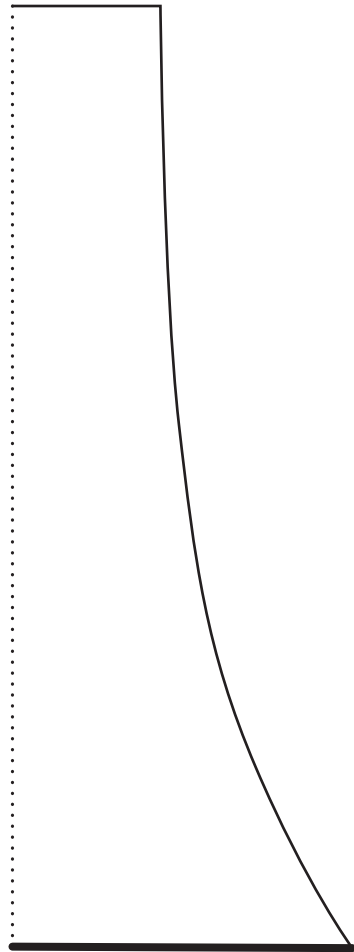




Slash Quilt Rug Bag

Bag Pattern
(Enlarge 140 % before using)



★1: If you place the ★ symbols on the pattern paper on top of other ★ of the same number, it becomes one big sheet.

Center



★1

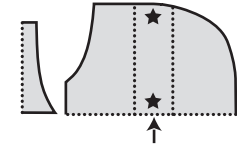
★1: If you place the ★ symbols on the pattern paper on top of other ★ of the same number, it becomes one big sheet.

Center



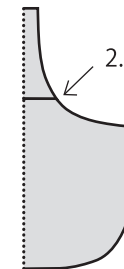
★2

1. Connect two sheets of paper and cut out two templates.



*Align the ★ marks over each other and combine them into a single pattern

2. Join with tape, etc.



3. As shown in the figure, rotate the template and copy it half by half.

